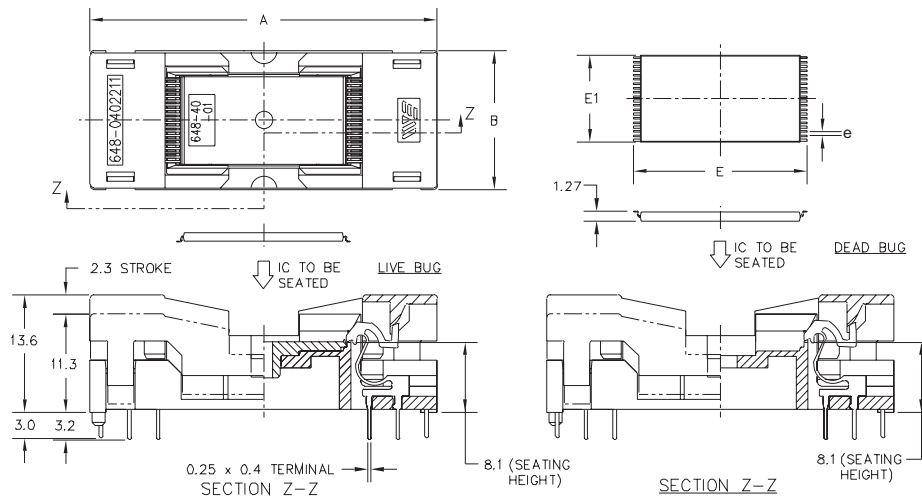


648 Series TSOP-I Socket

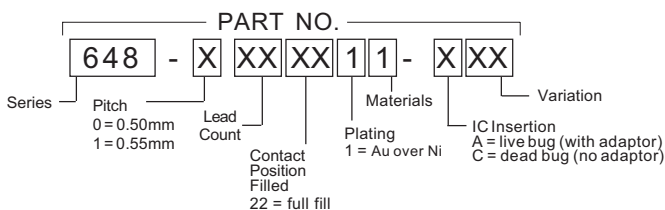
- Available dead bug or live bug with adaptor
- Open top, Zero Insertion Force design for automatic loading
- Highly reliable, pre-loaded contacts



Lead Count	Pitch e (mm)	Package Dimensions (mm)		Part Number	Adaptor	Socket Dimensions (mm)	
		Width (E1)	Tip to Tip (E)			Length (A)	Width (B)
28	0.55	8.00	13.40	648-1282211-A01	648-28-01	33.40	14.00
32	0.50	8.00	20.00	648-0322211-A01	648-32-01	40.00	14.00
32	0.50	8.00	14.00	648A0322211-A01	648A32-01	34.00	14.00
32	0.50	8.00	13.40	* 648B0322211	n/a	33.40	14.00
40	0.50	10.00	20.00	648-0402211-A01	648-40-01	40.00	16.00
40	0.50	10.00	14.00	648A0402211-A01	648A40-01	34.00	16.00
48	0.50	12.00	20.00	648-0482211-A01	648-48-01	40.00	18.00
48	0.50	12.00	20.00	* 648-0482211SA01	n/a	40.00	18.00
56	0.50	14.00	20.00	648-0562211-A01	648-56-01	40.00	20.00

* one-component base construction

DESCRIPTION & ORDERING INFORMATION



MATERIALS & SPECIFICATIONS

- Socket Body: PES, PEI, LCP or Equivalent
- Contact: Beryllium Copper Alloy
- Contact Plating: Gold over Nickel
- Contact Normal Force: 30 grams
- Contact Resistance: 50 mΩ
- Dielectric: 600V AC (RMS) for 1 min.
- Temperature Rating: 150°C
- Insulation Resistance: 5,000 MΩ @ 500V DC
- Durability: 10,000 cycles min.

X-ON Electronics

Largest Supplier of Electrical and Electronic Components

Click to view similar products for [wells cti](#) manufacturer:

Other Similar products are found below :

[Wells CTI](#)