

**MICRO SWITCH**  
a Honeywell Division

FED. MFG. CODE 91929

**ASSEMBLY-  
TOGGLE SWITCH**

CATALOG LISTING

**64AT44-3**

CATALOG LISTING  
**64AT44-3**

PAGE 1 OF 1

ISSUE **4**

REVISIONS

A	203860	TSM	4 SEP 01
B	204330	TSM	8 NOV 01
C	205427	TSM	25 APR 02

CHECK

NJ

CHECK

PTC/CAD 2D

DRAWN

GRT

REPLACES

RELEASE NO. 203860

CHECK

CHECK

CHECK

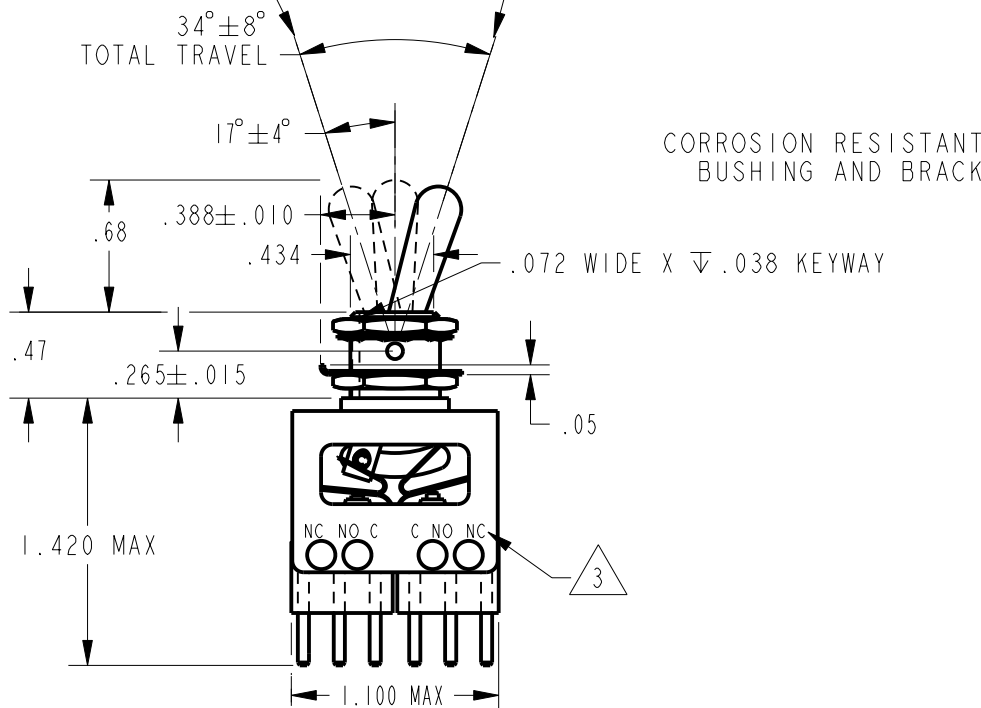
22 FEB 01

CHECK

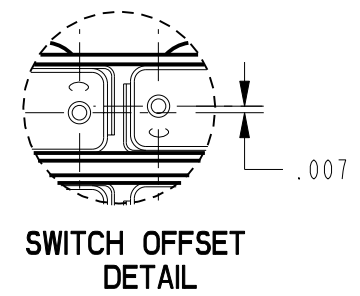
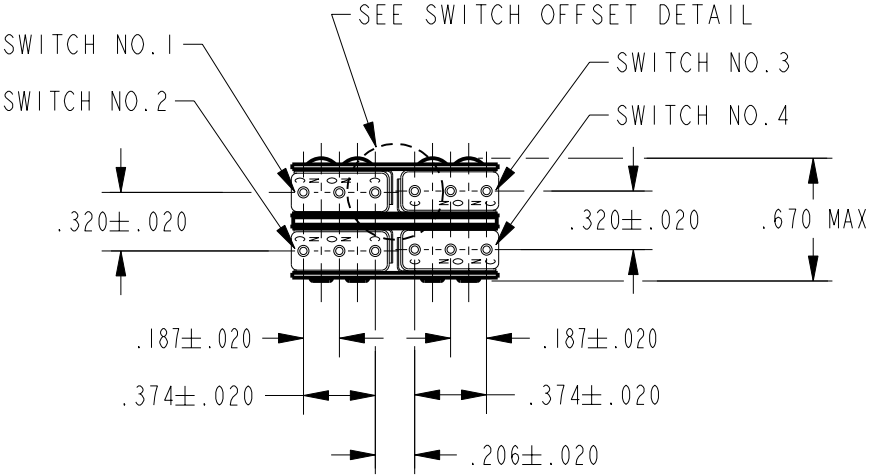
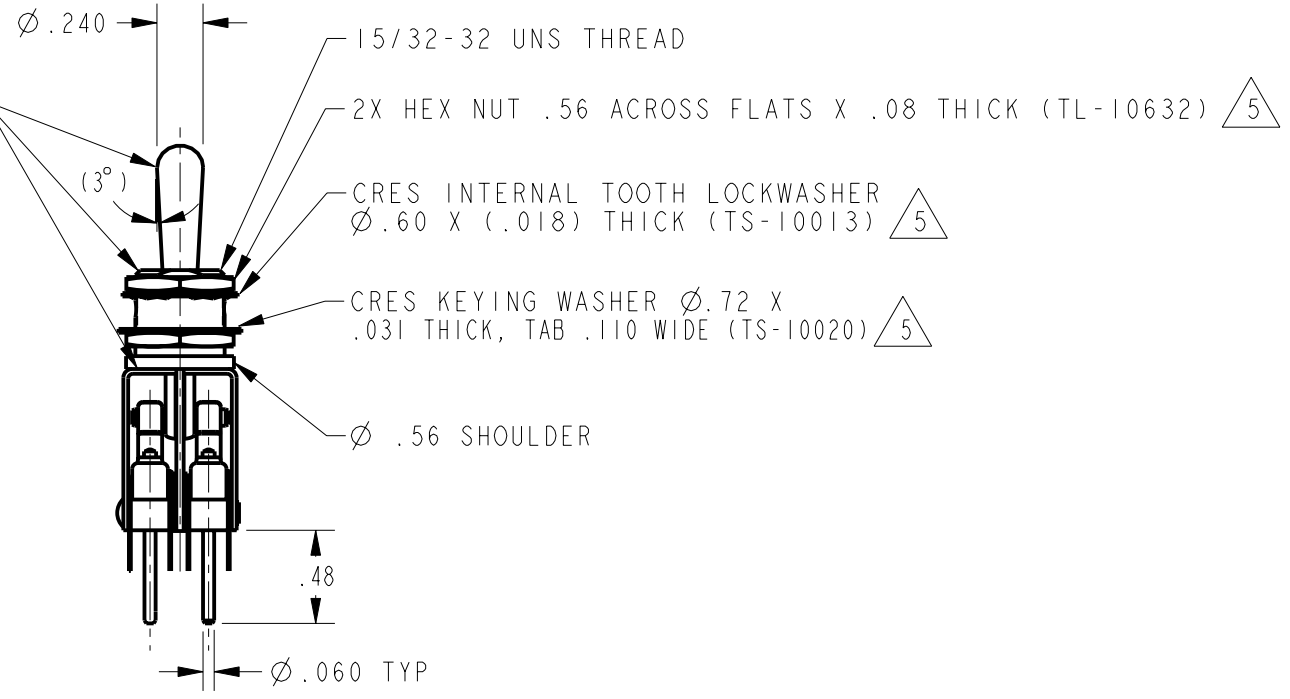
22 FEB 01

KEYWAY POSITION - MAINTAINED  
C-NC MADE SWITCHES 1 & 2  
C-NO MADE SWITCHES 3 & 4

OPPOSITE KEYWAY - MAINTAINED  
C-NC MADE SWITCHES 3 & 4  
C-NO MADE SWITCHES 1 & 2



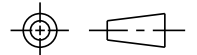
CORROSION RESISTANT LEVER  
BUSHING AND BRACKET



- NOTES
- 1 - UNIT INCLUDES "SX" TYPE BASIC SWITCH (4)
  - 2 - SWITCHES DO NOT NECESSARILY OPERATE SIMULTANEOUSLY
  - 3 - TERMINAL DESIGNATION MARKED ON BOTH SIDES OF UNIT
  - 4 - DULL FINISH ON LEVER AND BUSHING
  - 5 - HARDWARE FURNISHED ASSEMBLED WITH SWITCH OR IN PACKET 15PA313-AT PER MIL-PRF-8805
  - 6 - REPLACEMENT MOUNTING HARDWARE PACKET 15PA313-AT

THIS DRAWING COVERS A PROPRIETARY ITEM AND IS THE PROPERTY OF MICRO SWITCH, A DIVISION OF HONEYWELL. THIS DRAWING IS NOT TO BE COPIED OR USED WITHOUT THE APPROVAL OF MICRO SWITCH

THIRD ANGLE PROJECTION



CHARACTERISTICS	ELECTRICAL DATA
OPERATING FORCE	CONTACT ARRANGEMENT
FORCE TO MOVE LEVER FROM ONE POSITION TO ANY ADJACENT POSITION, 1-5 LB APPLIED .125±.030 BELOW TOP OF LEVER	4X S P D T

SCALE	FULL
DO NOT SCALE PRINT	
UNLESS OTHERWISE SPECIFIED TOLERANCES ARE	
ONE PLACE	(.0) ±.030
TWO PLACE	(.00) ±.015
THREE PLACE	(.000) ±.005
ANGLES	±
WEIGHT	

**DETAIL RATING CHART**

VOLTS	CYCLE	AMPERES SEA LEVEL				AMPERES 50,000 FT			
		RES	IND			RES	IND		
28VDC		1.000	.50			1.000	.50		

ANSI Y14.5M-1982 APPLIES

## X-ON Electronics

Largest Supplier of Electrical and Electronic Components

*Click to view similar products for [Toggle Switches](#) category:*

*Click to view products by [Honeywell](#) manufacturer:*

Other Similar products are found below :

[A19HV](#) [8A1-C-222](#) [60012L](#) [6006L](#) [6663](#) [7101MD9V30GE](#) [7101SPDV30BE](#) [7103SDV30BE](#) [7105D](#) [7108P3YAV2BE](#) [71YY50282](#)  
[7201MD9AVBE](#) [7301K38](#) [7306K36](#) [7310K36](#) [7314K36](#) [7506K4](#) [7592K6](#) [7691K14](#) [7700K1](#) [8396K108](#) [8824K14](#) [8828K13](#) [G3VX](#) [PS83-](#)  
[121G](#) [A101MD9AB04](#) [A101SD9AB04](#) [A101SDCQ04](#) [A103SD9AQ04](#) [A107TZB04](#) [A123P32YZQ](#) [A123S1YZG](#) [A127S1YCQ](#) [1-1825192-](#)  
[0](#) [A131S1YZQ](#) [A201SCWZB04](#) [A207SYCB04](#) [A208J61ZQ0004](#) [A221K12KAG](#) [A221S1YZQ](#) [A221T1TCQ](#) [A232K12KZQ](#) [A232M1YCQ](#)  
[A323S1CWZQ](#) [A423S1YZQ](#) [12149A-3V](#) [12156AX408](#) [12147AGKX679](#) [12149AD2G0383VX408](#) [12246X778](#)