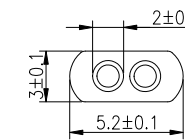
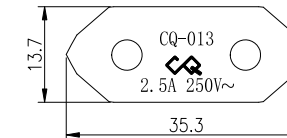
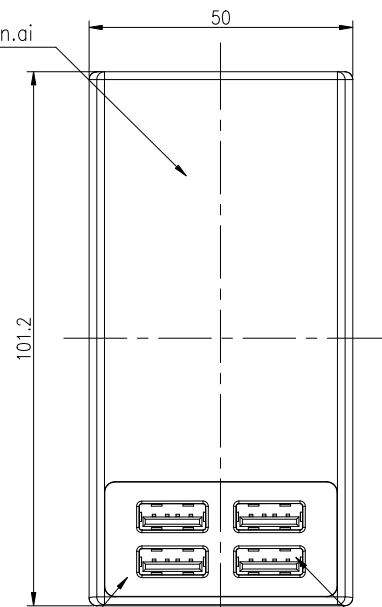


Netzanschluss / mains socket  
IEC-320 C8



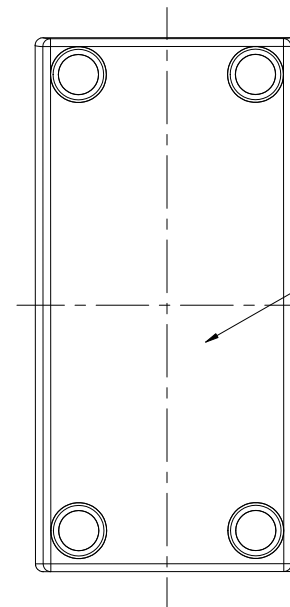
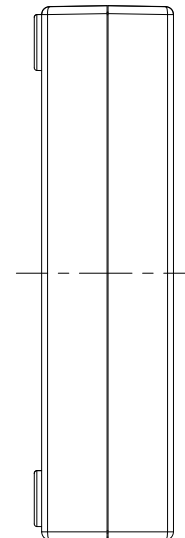
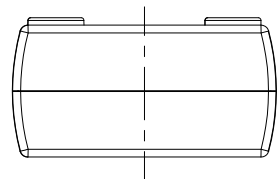
Bedruckung/printing

Quelle/source: 1001-0032\_print-on.ai



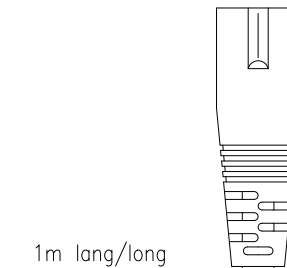
Gebürstetes Aluminium/  
brushed aluminium

USB Buchse/  
USB socket

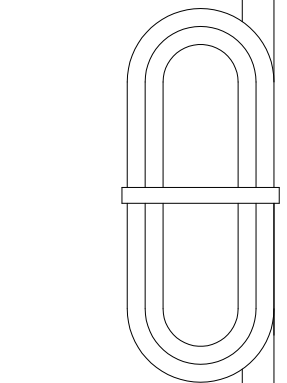


Bedruckung/printing

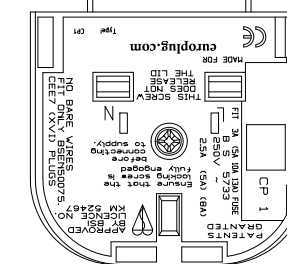
Quelle/source: 1001-0032\_print-on.ai



1m lang/long



Euro-Netzkabel/  
Euro-main cord



Euro - UK Adapter  
10950063/01

Technische Daten/  
technical data

- Eingangsspannung/  
input voltage : 100-240V AC ±10% / 60/50Hz
- Ausgangsspannung/  
output voltage : 5V DC ±5%
- Ausgangsstrom/  
output current : 6.8A (4x 1.7A)
- Leistungsaufnahme im Leerlauf/  
stand-by power consumption : <0,3W
- Ausgangs-Schutz  
output electrical protection : Überlastschutz elektronisch / overload protection electronical
- Schutzart/  
protection : IP 20
- Isolation/  
insulation : 4 kV Eingang/Ausgang  
primary/secondary
- Betriebstemperatur/  
operating temperature : 0°C.....+25°C
- Lagertemperatur/  
storage temperature : -25°C.....+70°C
- Gewicht/  
weight : 234g inkl. Zubehör, ohne Verpackung/  
234g incl. accessories, without package
- Gehäuse/  
case : Tischgehäuse schwarz/  
desktop housing black
- Gehäusematerial/  
case material : ABS plastic
- Verpackung/  
packaging : Blisterverpackung (0100-3212)  
blister shell (0100-3212)
- Approbation/  
approval : CE

Application range for inquiry	Allowable deviation general tolerances	Surface	Model:	Material:
	DIN ISO 2768-m		Scale (DIN A2): 1:1	All dimensions in mm
	2016 Date	Name	Drawing name	
	Drawn by	JF	ACDC-iUSBCHARGER-6.8- QUATTRO-UK-bi UK/EU	
	Approved by		Drawing number Part number	
			1001-0032-UK	
Version	Change	Date	Name	Project: xx-xxxx-xxxx
VO	---	31.03.16	JF	Replaced by:
				Replacement through:

The supplier acknowledges that, with the acceptance of the drawing, he is in a position to manufacture the illustrated part in accordance with the drawing in reproducible form and series production. Through the selected manufacturing processes no impairments will arise in the material and structure which could subsequently lead to an impairment of the component. Type approvals over and above that are not valid. Deviations from this fact must be written and must be signed by the purchaser.

This drawing may not be copied, reproduced or made available to third parties in any way whatsoever without the prior written approval.



Sheet  
1/1

## **X-ON Electronics**

Largest Supplier of Electrical and Electronic Components

*Click to view similar products for [ansmann](#) manufacturer:*

Other Similar products are found below :

[5020012](#) [1000-0003](#) [5013233](#) [5030992](#) [1520-0004](#) [1501-0004-1](#) [1001-0020-UK](#) [2312-3003](#) [1250-0013](#) [1600-0199](#) [5030902](#) [1900-0019](#)  
[1001-0014-UK](#) [5035362](#) [5013243](#) [5707173](#) [1600-0137](#) [5035391](#) [5000023](#) [5311113 / APS 1000](#) [1600-0138](#) [1250-0014](#) [BCA120-350](#) [1600-0145](#) [5015293](#) [5030982](#) [2311-3003](#) [5030802](#) [10950964/01](#) [5030912](#) [5016243](#) [5035222](#) [2310-3001](#) [5030641](#) [5001183](#) [1600-0154](#) [5035352](#)  
[5035342](#) [ACS310](#) [5035202](#) [5015332](#) [5035201](#) [5015303](#) [2311-3002](#)