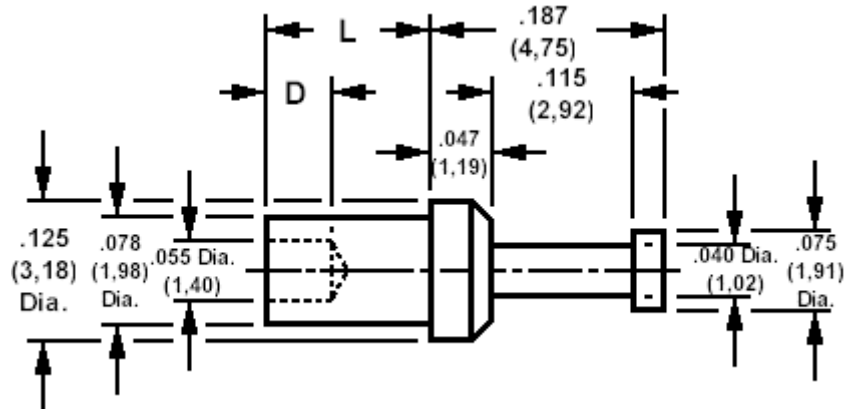


160-1457 Solder terminal, turreted

Recommended mounting hole .082 (2,08), #45 drill



How to order code

160-1457-XX-YY-00

Basic Part No XX = L dimension, YY = Plating Finish

DIMENSIONS (XX)

Basic Part No	(XX)	L	Board Thickness	D
160-1457	-01	.078 (1,98)	.031 (0,79)	.068 (1,19)
	-02	.109 (2,77)	.062 (1,58)	.098 (2,48)
	-03	.141 (3,58)	.094 (2,38)	.098 (2,48)
	-04	.172 (4,37)	.125 (3,18)	.098 (2,48)

MATERIALS

Component	Material	Finish (YY)		
		-01	-03	-05
Terminal	Brass	Silver	Gold	Electro Solder

SWAGE TOOLING

Recommended Swaging Tools:-	
Anvil	435-6446-01-00-00
Roll punch	435-6603-01-00-00
Flare punch	435-6663-01-00-00

X-ON Electronics

Largest Supplier of Electrical and Electronic Components

Click to view similar products for [cambion manufacturer](#):

Other Similar products are found below :

[570-1990-01-01-00](#) [570-1511-01-01-19](#) [450-8340-01-06-00](#) [450-8325-01-06-00](#) [450-3367-01-04-00](#) [571-4182-03-01-19](#) [945-8078-01-04-00](#)
[160-1512-02-01-00](#) [460-8250-01-03-00](#) [460-8250-01-04-00](#) [571-4015-01-01-19](#) [160-1582-02-01-00](#) [450-3388-01-03-00](#)