

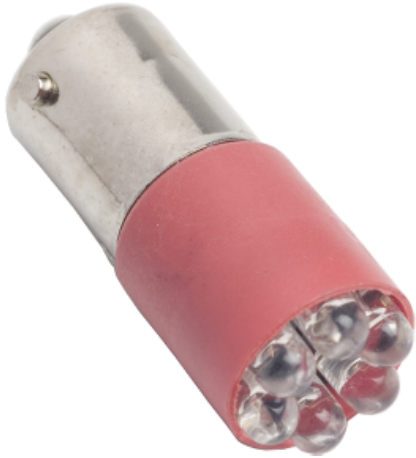
Product data sheet

Characteristics

6508805210

RED LED MARKED BSD-1318-6UR

Product availability : Non-Stock - Not normally stocked in distribution facility



Main

Accessory / separate part designation	Super bright LED bulb
Accessory / separate part type	LED bulb
Accessory / separate part category	Lighting accessories
Accessory / separate part destination	Control and signalling units Ø 30 mm
Bulb base	BA 9s
Signalling colour	Red
Additional information	Requires the color cap and the LED be the same or use a clear color cap

Complementary

Range compatibility	Harmony 9001SK Harmony 9001K
Product compatibility	9001...35L 9001...36L 9001...38L
Product weight	0.02 lb(US) (0.01 kg)

Ordering and shipping details

Category	18061 - SPARE PARTS DISCOUNT CP1
Discount Schedule	CP1
GTIN	00785901446644
Nbr. of units in pkg.	250
Package weight(Lbs)	0.01
Returnability	N
Country of origin	US

Offer Sustainability

RoHS (date code: YYWW)	Compliant - since 0921 - Schneider Electric declaration of conformity
------------------------	---

Contractual warranty

Warranty period	18 months
-----------------	-----------

X-ON Electronics

Largest Supplier of Electrical and Electronic Components

Click to view similar products for [schneider](#) manufacturer:

Other Similar products are found below :

[LU9M1](#) [7D](#) [7S](#) [7XA1](#) [FNQR2](#) [8501RS44V24](#) [8501RSD14P14V51](#) [8501XO20V03Y414](#) [9001KXRK](#) [9001SKR9P35RH25](#) [9001SKT35L31](#)
[9003K2C003GA](#) [9007AA1](#) [9007BA1](#) [9007C54D](#) [9007C62A2](#) [9007CA11](#) [9007FA3](#) [9007HA4](#) [9007HA6](#) [9007KA1](#) [9007KB11](#)
[9007MS01S0206](#) [9007MS02S0300](#) [9012GAR4](#) [9012GAW2](#) [9012GBW1](#) [9012GDW5E3](#) [9012GFW1](#) [9012GNG1](#) [9012GNG3](#) [9012GNG6](#)
[9013FHG39J69](#) [9013GHG2J30](#) [9050JCK2F30V14](#) [GV2ME32](#) [GV2P10](#) [GVAN20](#) [GZ1E02](#) [ABL8RPS24030](#) [DL1BLB](#) [ATS01N206QN](#)
[RSL1PRJU](#) [9001KA35](#) [9001KA3G](#) [9001KA4](#) [9001KR1GH5](#) [9001KR1U](#) [9001KXSDC](#) [9007C52A2](#)