

P2

Panel Mounted

Keylock

P2

mm) Ø 19.1	
tics	<ul style="list-style-type: none">■ up to 12 contact pairs■ 2 security options with key actuation■ from 2 to 4 switch positions■ key trapping option■ solder terminals
ing	250 VAC, 2 A
mm) Ø 22	
ator	<ul style="list-style-type: none">■ key (common or differs)
als	UL (optional)



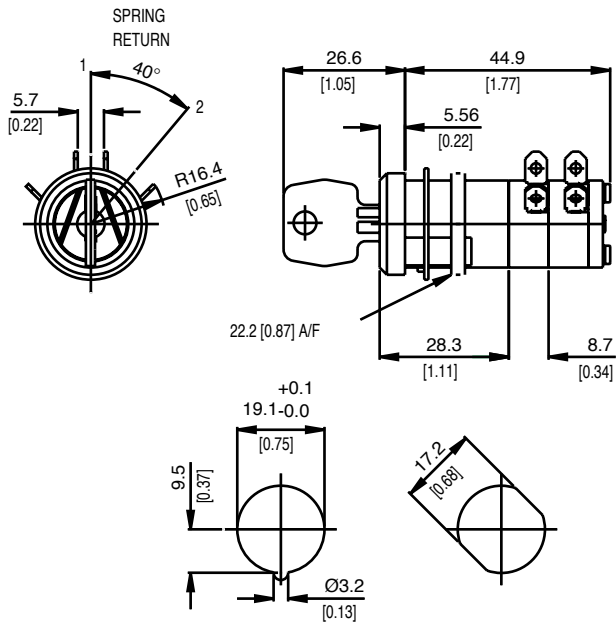
Preferred Range

ence	Terminal	Circuit	Actuator	Contacts	Electrical rating
06	Screws	2 pole CO	Key	Ag	Up to 250 VAC, 2 A
09	Screws	2 pole CO	Key	Ag	Up to 250 VAC, 2 A
09	Screws	2 pole CO	Key	Ag	Up to 250 VAC, 2 A
09	Screws	2 pole CO	Key	Ag	Up to 250 VAC, 2 A



Specifications

Key	Nickel silver
Body	Glass-fibre reinforced nylon
Springs	Stainless steel
Contacts	Silver
Terminals	4.8 × 0.8 mm (0.19 × 0.032 in) faston (faston) - silver-plated brass
Temperature range °C	-20°C to +85°C
Mechanical life	50,000 operations (minimum)
Mounting	Locknut and washer
Actuators	General duty keylocks
Switching function	Change-over (spring return), change-over (separate circuits)
Key indexing	90°



Recommended maximum electrical ratings

Voltage (max)	Resistive load (A)	Inductive load	Horsepower	Approval
125 VAC	4 (0.75 pf)	-	-	UL 1054/CSA 22.2 No. 55 - 6,000 operations
250 VAC	2 (0.75 pf)	2	-	UL 1054/CSA 22.2 No. 55 - 6,000 operations
12 VDC	10	-	-	UL 1054/CSA 22.2 No. 55 - 6,000 operations

Operating Characteristics

Switching function	Reference	Actuator Type	Code Production run key coding	Key trapping	Diagram
2 pole change-over, spring return	P23FBA206 P23FMA206	Key Key	001 Production run key coding	No No	
2 pole change-over, separate circuits	P23FBA209 P23FMA209	Key Key	001 Production run key coding	No No	
2 pole change-over, separate circuits	P23FBC209 P23DMC209	Key Key - increased security	001 Production run key coding	Yes Yes	

Type coding key for standard products

Type	Code	Description	Example: P2 3F B A 2 06
Type	P2		
Code	3F	Key - general duty	
Code	B	001 key	
Code	M	Production run key coding	
Code	A	Key removable in all positions	
Code	C	Key trapped horizontally, right	
Code	2	2 poles	
Code	06	Change-over with spring return	
Code	09	Change-over with separate circuits	



X-ON Electronics

Largest Supplier of Electrical and Electronic Components

Click to view similar products for [Switch Hardware](#) category:

Click to view products by [Saia-Burgess](#) manufacturer:

Other Similar products are found below :

[893102000](#) [LZZ1A](#) [0098.9234](#) [61-9707.7](#) [61-9771.0](#) [M2PA-5011](#) [635401](#) [6PA104](#) [6PA113](#) [6PA147-E6](#) [6PA148-E6](#) [6PA32](#) [6PA9](#) [700106](#)
[700109](#) [700201A56](#) [700303A56](#) [700701264](#) [700C1GRY](#) [700C2GRN](#) [704-6001](#) [704.960.4](#) [704.960.9](#) [704.965.1](#) [704.965.2](#) [704.965.6](#)
[704.966.0](#) [7089-3](#) [71M1048](#) [757200264](#) [778000A56](#) [79215938](#) [MHU35](#) [MHU37](#) [825.003.011](#) [825.005.011](#) [825.053.011](#) [825.055.011](#)
[826.000.071](#) [827.020.011](#) [827.400.021](#) [835.900.023](#) [MML52C10C](#) [MML52E10C](#) [MML72EEK](#) [MML92HGH](#) [MML93K](#) [84211M02CNNS](#)
[84211M02LGRS](#) [84211M02LNNX3](#)