

## Exchangeable Primary Adapters

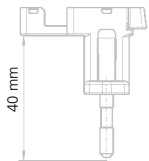
**FRIWO®**

POWERUNLIMITED

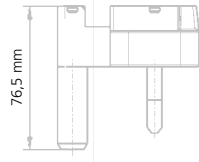
Primary Adapters



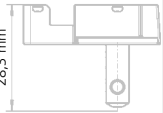
□ □ ■ □ News



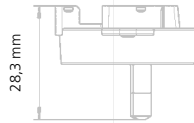
EURO



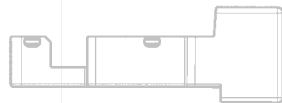
UK



USA / Japan



Australia



IEC

The GPP-series can be variably equipped with the mains plugs as shown. Your applications and products can be sold and used worldwide due to the set of all country mains plugs which can be inserted with the unit.

Mobility and dependability with respect to the use of the product are increased in this way and provide a constant level of functionality and availability – wherever you are in the world. Beyond that, these plug modules help reducing the logistic complexity, avoiding the need to plan and stock mains adapters and chargers in various mains plug configurations. In countries with mains plugs which are not covered by EURO, UK, USA/Japan and Australia mains plug types, the IEC adapter with the 2-pin IEC 320 C8 socket provides a standardized alternative.



### Primary Adapters

Type	Order No.
EURO	1827417
UK	1827420
USA/Japan	1827422
Australia	1827425
IEC	1827428

SWITCHMODE INSIDE

## Switchmode Power Supply

# GPP 10

Conforms to IEC 60950



### Applications

- Office equipment
- Data transmission devices
- IT equipment
- Measurement and weighing technology

### Characteristics

- Universal input 100 to 240 V AC
- Interchangeable primary adapters
- Constant voltage, current limited
- Light weight and universal use
- Low standby power
- Continuously short circuit proof

### Reliability specifications

**MTBF calculation** 200,000 hours at maximum load levels and an ambient temperature of 25° C (in correspondence with MIL-HDBK-217)

### Mechanical specification

**Weight approx.** 113 g  
**Plug connector** AC input: FRIWO exchangeable mains plug system: EURO, UK, USA / Japan, Australia, IEC  
 DC output: Universal output plug system

### Technical Data

**Input voltage** 100 to 240 V AC  
**Input current** 250 mA  
**Frequency** 50 to 60 Hz  
**Efficiency** 80% typ. at full load  
**EMV** Conforms to EN 55011, EN 55014, EN 55022 / B, FCC 47 part 15, EN 61000-3-2, EN 61000-4-2, EN 61000-4-3, EN 61000-4-4, EN 61000-4-5, EN 61000-4-11

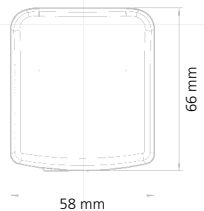
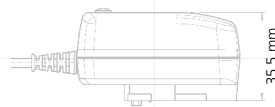
**Output voltage tolerance** + 5%, -7%

### Environmental specification

**Operating temp.** 0 to 40° C at maximum load  
**Storage temp.** -40 to 70° C  
**Humidity** 5% to 95% non condensing  
**Input transient susceptibility** Complies with IEC 61000 requirements

### Safety specifications

**Standards** Fulfils Class II SELV for the following applications: EN 60950 / IEC 60950, UL 60950, CSA 950 (cUL), VDE, CE-label



Output data			Worldwide
Voltage	Current	Ripple Volt.	Order No.
5 V	1600 mA	75 mV pp	1827490
6 V	1400 mA	75 mV pp	1827491
7,5 V	1200 mA	75 mV pp	1827492
9 V	1000 mA	75 mV pp	1827493
12 V	800 mA	75 mV pp	1827494
15 V	700 mA	75 mV pp	1827495
18 V	560 mA	125 mV pp	1827496
24 V	420 mA	125 mV pp	1827497

## Switchmode Power Supply

# GPP 10 Medical

Conforms to IEC 60601-1



### Applications

- Blood analyzer
- Patient monitors
- Measuring instruments
- Laboratory equipment

### Characteristics

- Universal input 100 to 240 V AC
- Interchangeable primary adapters
- Constant voltage, current limited
- Green LED indicator
- Low leakage current ≤ 10 µA
- Low standby power
- Continuously short circuit proof

### Reliability specifications

**MTBF calculation** 200,000 hours at maximum load levels and an ambient temperature of 25° C (in correspondence with MIL-HDBK-217)

### Mechanical specification

**Weight approx.** 113 g  
**Plug connector** AC input: FRIWO exchangeable mains plug system: EURO, UK, USA / Japan, Australia, IEC  
 DC output: Universal output plug system

### Technical Data

**Input voltage** 100 to 240 V AC  
**Input current** 250 mA  
**Frequency** 50 to 60 Hz  
**Efficiency** 80% typ. at full load  
**EMV** Conforms to EN 55011, EN 55014, EN 55022 / B, FCC 47 part 15, EN 61000-3-2, EN 61000-4-2, EN 61000-4-3, EN 61000-4-4, EN 61000-4-5, EN 61000-4-11

**Output voltage tolerance** + 5%, -7%

### Environmental specification

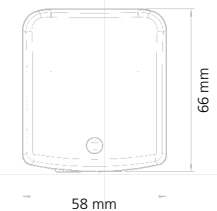
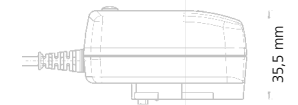
**Operating temp.** 0 to 40° C at maximum load  
**Storage temp.** -40 to 70° C  
**Humidity** 5% to 95% non condensing  
**Input transient susceptibility** Complies with IEC 61000 requirements

### Safety specifications

**Standards** Fulfils Class II SELV for the following applications: IEC 60601-1, UL 2601, VDE, CE label, fulfils medical application class B/BF/CF

### Market leading Medical power supplies

100 to 240 V input voltage without earthing, leakage current ≤ 10 µA



Output data			Worldwide
Voltage	Current	Ripple Volt.	Order No.
5 V	1600 mA	75 mV pp	1950062
6 V	1400 mA	75 mV pp	1950064
7,5 V	1200 mA	75 mV pp	1950063
9 V	1000 mA	75 mV pp	1950068
12 V	800 mA	75 mV pp	1950082
15 V	700 mA	75 mV pp	1950067
18 V	560 mA	125 mV pp	1950066
24 V	420 mA	125 mV pp	1950065

10 Watt

10 Watt

## **X-ON Electronics**

Largest Supplier of Electrical and Electronic Components

*Click to view similar products for [Friwo](#) manufacturer:*

Other Similar products are found below :

[FOXD30 12V](#) [1812753](#) [1812749](#) [FOX12 MEDICAL 5V](#) [FOX18 MEDICAL 12V](#) [FOX12 5V](#) [FOX18 12V](#) [FODX30 MEDICAL 12V](#) [FOX6 MEDICAL USB](#) [1894875](#) [1898154](#) [FOXD30 5V](#) [FOX12 MEDICAL USB](#) [FOX18 MEDICAL 24V](#) [FOX18 5V](#) [1826393](#) [1895235](#)