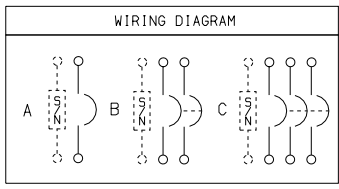


**FA 100 RB
NEMA/EEMAC TYPE 3R**

HUB NOTE: TOP OF NEMA/EEMAC TYPE 3R ENCLOSURE HAS PROVISIONS FOR MAXIMUM 2.50 BOLT-ON HUB.
64



| CIRCUIT BREAKER CAT. NO. PREFIX | AMPERE RATING | CONDUCTORS PER PHASE | WIRE SIZE (AWG) | | TYPE |
|---------------------------------|---------------|----------------------|-----------------|------|------|
| | | | MAX. | MIN. | |
| FAL, FHL | 15-30A | 1 | #4 | #12 | AL |
| | | | #4 | #14 | CU |
| | 35-100A | 1 | #1/0 | #12 | AL |
| FCL | 15-30A | 1 | #10 | #14 | CU |
| | | | #1 | #12 | AL |
| | 35-100A | 1 | #3 | #14 | CU |

| SYMBOL | CONDUIT SIZE | | DIAMETER | |
|--------|--------------|----|----------|----|
| | IN | MM | IN | MM |
| A | .50 | 13 | .88 | 22 |
| B | .75 | 19 | 1.13 | 29 |
| C | 1.00 | 25 | 1.38 | 35 |
| D | 1.25 | 32 | 1.75 | 45 |
| E | 1.50 | 38 | 2.00 | 51 |
| F | 2.00 | 51 | 2.50 | 64 |

| CATALOG NUMBER | MAXIMUM AMPERE RATING | NUMBER OF TERMINALS | CONDUCTORS PER PHASE | WIRE SIZE (AWG) | | TYPE |
|----------------|-----------------------|---------------------|----------------------|-----------------|------|------|
| | | | | MAX. | MIN. | |
| SN100FA | 100A | 2 | 1 | #1/0 | #12 | AL |
| | | | | #1/0 | #14 | CU |
| PK0GTA2 | - | 2 | 1 | #2/0 | #6 | AL |
| | | | | #2/0 | #10 | CU |

| CIRCUIT BREAKER CATALOG NO. PREFIX | WIRING DIAG. | AMPERE RATING | UL LISTED INTERRUPTING RATING | | | | | | | FEDERAL SPECS. W-C-375B/GEN | |
|------------------------------------|--------------|---------------|-------------------------------|------|----------|------------|-----|-----|-----|-----------------------------|---------------|
| | | | RMS SYMMETRICAL AMPERES | | | | | | | | |
| | | | AC VOLTAGE | | | DC VOLTAGE | | | | | |
| | | | 120 | 240 | 480Y/277 | 480 | 600 | 125 | 250 | 500 | |
| FAL 240V | A | 15-100 | 10K | - | - | - | - | 5K | - | - | 11A |
| | B | 15-100 | 10K | 10K | - | - | - | 5K | 5K | - | 11B, 12B |
| | C | 15-100 | 10K | 10K | - | - | - | 5K | 5K | - | 11B, 12B |
| FAL 480V | A | 15-100 | 25K | 18K | 18K | - | - | 10K | - | - | 11A, 12A, 13A |
| | B | 15-100 | 25K | 25K | 18K | 18K | - | 10K | 10K | - | 13B |
| | C | 15-100 | 25K | 25K | 18K | 18K | - | 10K | 10K | - | 13B |
| FAL 600V | B | 15-100 | 25K | 25K | 18K | 18K | 14K | 10K | 10K | - | 18A |
| | C | 15-100 | 25K | 25K | 18K | 18K | 14K | 10K | 10K | - | 18A |
| FHL | A | 15-30 | 65K | 65K | 65K | - | - | 10K | - | - | 13A |
| | A | 35-100 | 65K | 25K | 25K | - | - | 10K | - | - | 13A |
| | B | 15-100 | 65K | 65K | 25K | 25K | 18K | 10K | 10K | - | 22A |
| FHL-DC | C | - | - | - | - | - | - | - | - | 20K | - |
| | C | - | - | - | - | - | - | - | - | - | - |
| FCL | B | 15-100 | 100K | 100K | 65K | 65K | - | - | - | - | 22A |
| | C | 15-100 | 100K | 100K | 65K | 65K | - | - | - | - | 22A |

NOTES:
FINISH - GRAY BAKED ENAMEL ELECTRODEPOSITED OVER CLEANED PHOSPHATIZED STEEL.
UL LISTED - FILE E-136861 CSA CERTIFIED - FILE #LL89067.
SUITABLE FOR USE AS SERVICE EQUIPMENT WHEN NEUTRAL ASSEMBLY IS INSTALLED.
NEUTRAL - INSULATED GROUNDABLE.
THE SHORT CIRCUIT CURRENT RATING OF THIS ENCLOSED CIRCUIT BREAKER IS EQUAL TO THE INTERRUPTING RATING, AT THE SUPPLY VOLTAGE MARKED ON THE CIRCUIT BREAKER INSTALLED.

DUAL DIMENSIONS: INCHES
MILLIMETERS

CIRCUIT BREAKER ENCLOSURES
15-100 AMPERE
NEMA/EEMAC TYPE 3R RAINPROOF ENCLOSURE



DWG. NO. 3062

X-ON Electronics

Largest Supplier of Electrical and Electronic Components

Click to view similar products for [schneider](#) manufacturer:

Other Similar products are found below :

[LU9M1](#) [7D](#) [7S](#) [7XA1](#) [FNQR2](#) [8501RS44V24](#) [8501RSD14P14V51](#) [8501XO20V03Y414](#) [9001KXRK](#) [9001SKR9P35RH25](#) [9001SKT35L31](#)
[9003K2C003GA](#) [9007AA1](#) [9007BA1](#) [9007C54D](#) [9007C62A2](#) [9007CA11](#) [9007FA3](#) [9007HA4](#) [9007HA6](#) [9007KA1](#) [9007KB11](#)
[9007MS01S0206](#) [9007MS02S0300](#) [9012GAR4](#) [9012GAW2](#) [9012GBW1](#) [9012GDW5E3](#) [9012GFW1](#) [9012GNG1](#) [9012GNG3](#) [9012GNG6](#)
[9013FHG39J69](#) [9013GHG2J30](#) [9050JCK2F30V14](#) [GV2ME32](#) [GV2P10](#) [GVAN20](#) [GZ1E02](#) [ABL8RPS24030](#) [DL1BLB](#) [ATS01N206QN](#)
[RSL1PRJU](#) [9001KA35](#) [9001KA3G](#) [9001KA4](#) [9001KR1GH5](#) [9001KR1U](#) [9001KXSDC](#) [9007C52A2](#)