

## Lisa2-Clip16-DD miniature lens for Sharp GM2BB... (Double Dome) series of LEDs



**SHARP.**



- Lens material optical grade PMMA with high UV and temperature resistance (105°C/220°F). Lens holder molded of high quality black PC.
- High optical efficiency, up to 90%.
- Integrated holder with small snap clips. See drawing below for more details. Fastening of holden the lens to PCB.
- Very small and compact dimensions: Diameter 9.9 mm, height 6.8 mm.

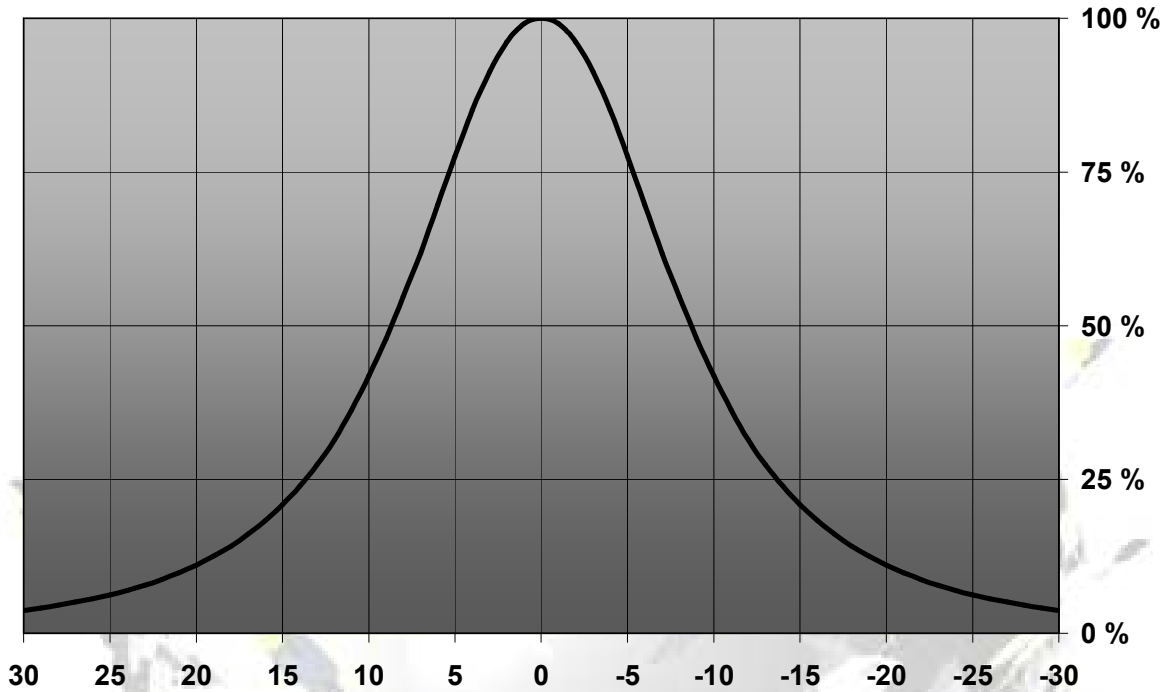
### LENS TYPES

NAME	ORDERING CODE	FWHM Angle
Lisa2-Clip16 Real Spot	FA11085_Lisa2-RS-clip16-DD	±9°
Lisa2-Clip16 Medium	FA11075_Lisa2-M-clip16-DD	±14°
Lisa2-Clip16 Oval	FA11121_Lisa2-O-clip16-DD	~±5° x ~16°
Lisa2-Clip16 Wide	FA11076_Lisa2-W-clip16-DD	±22°

~ results are based on simulation value.

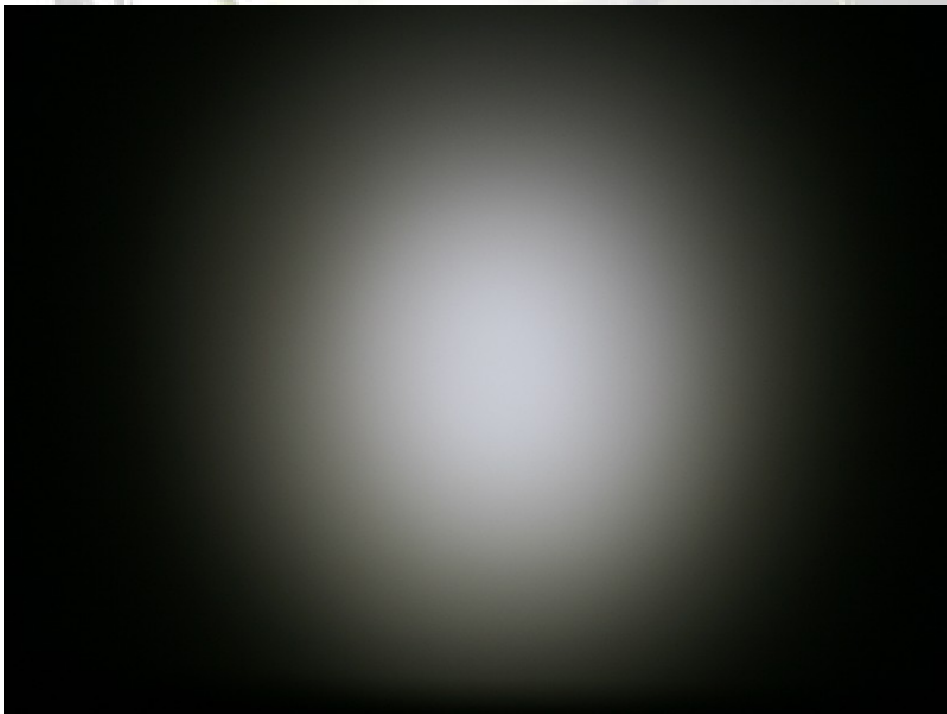
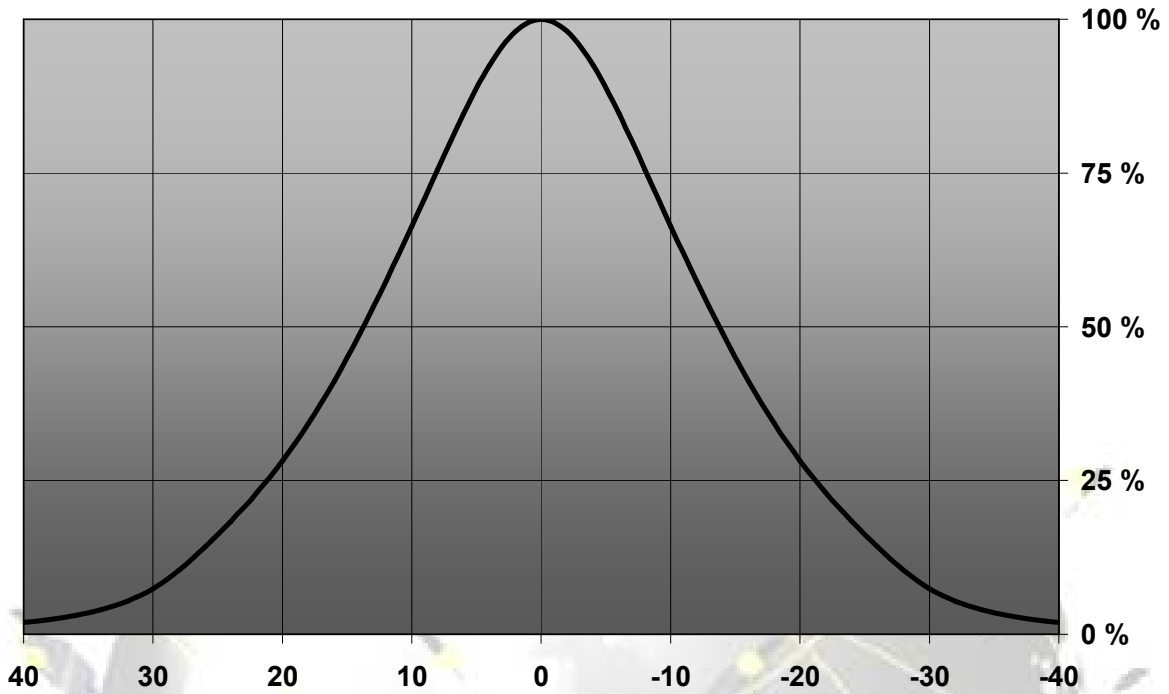
**MEASUREMENT DATA**

Relative Intensity of FA11055\_Lisa2-RS-Pin-DD



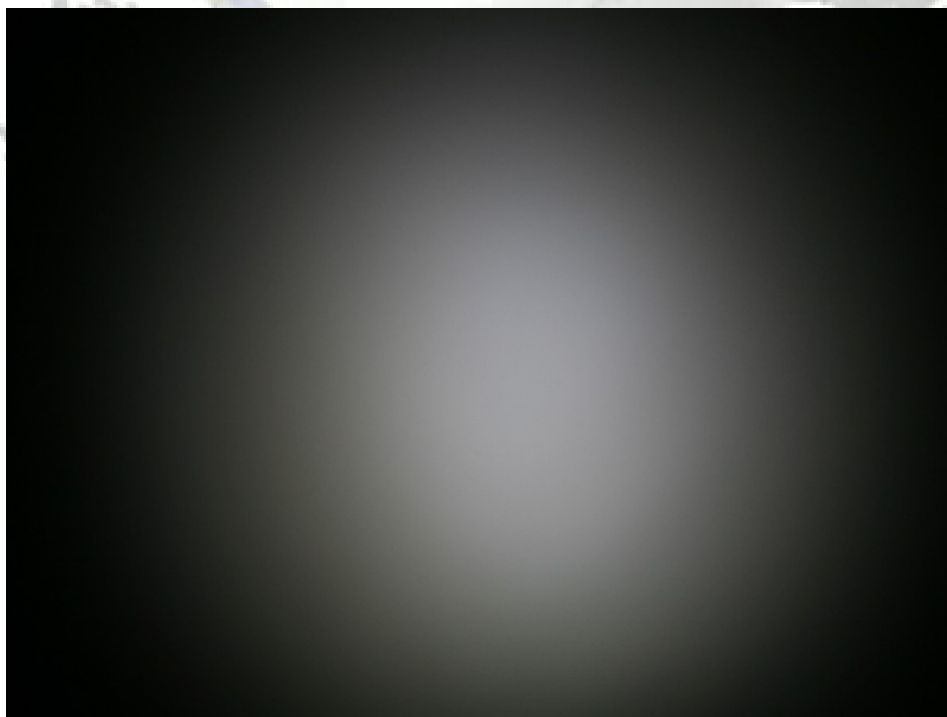
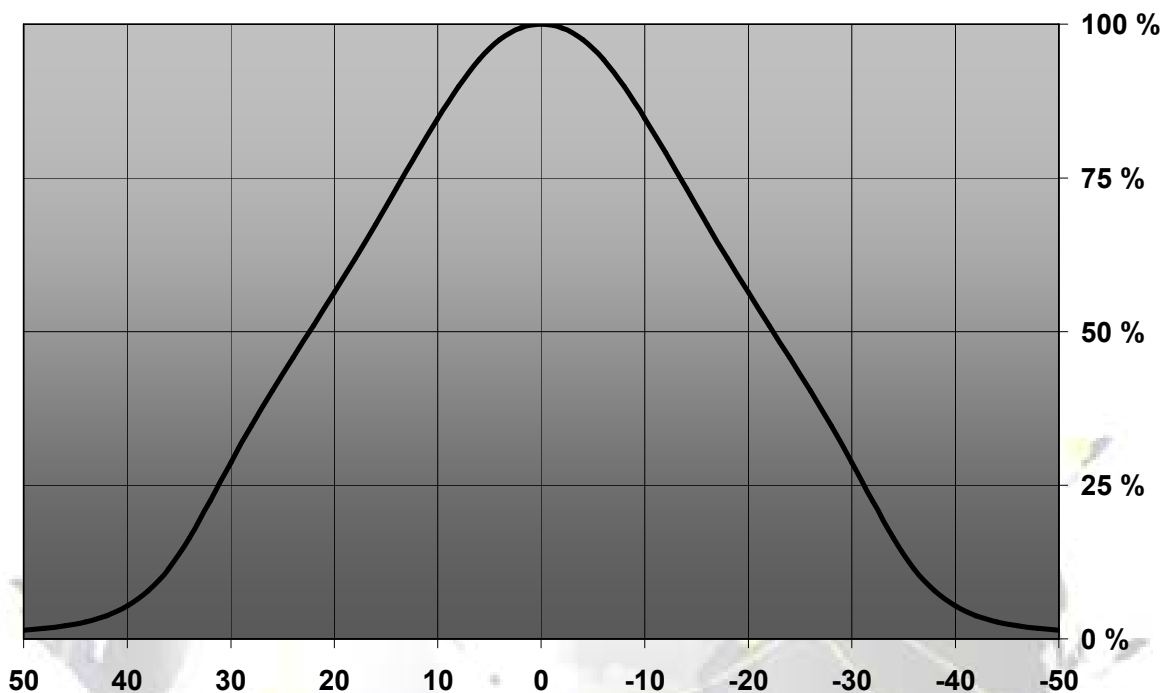
© Ledil Oy – PRELIMINARY - Subject to change without prior notice

Relative Intensity of FA10995\_Lisa2-M-Pin-DD



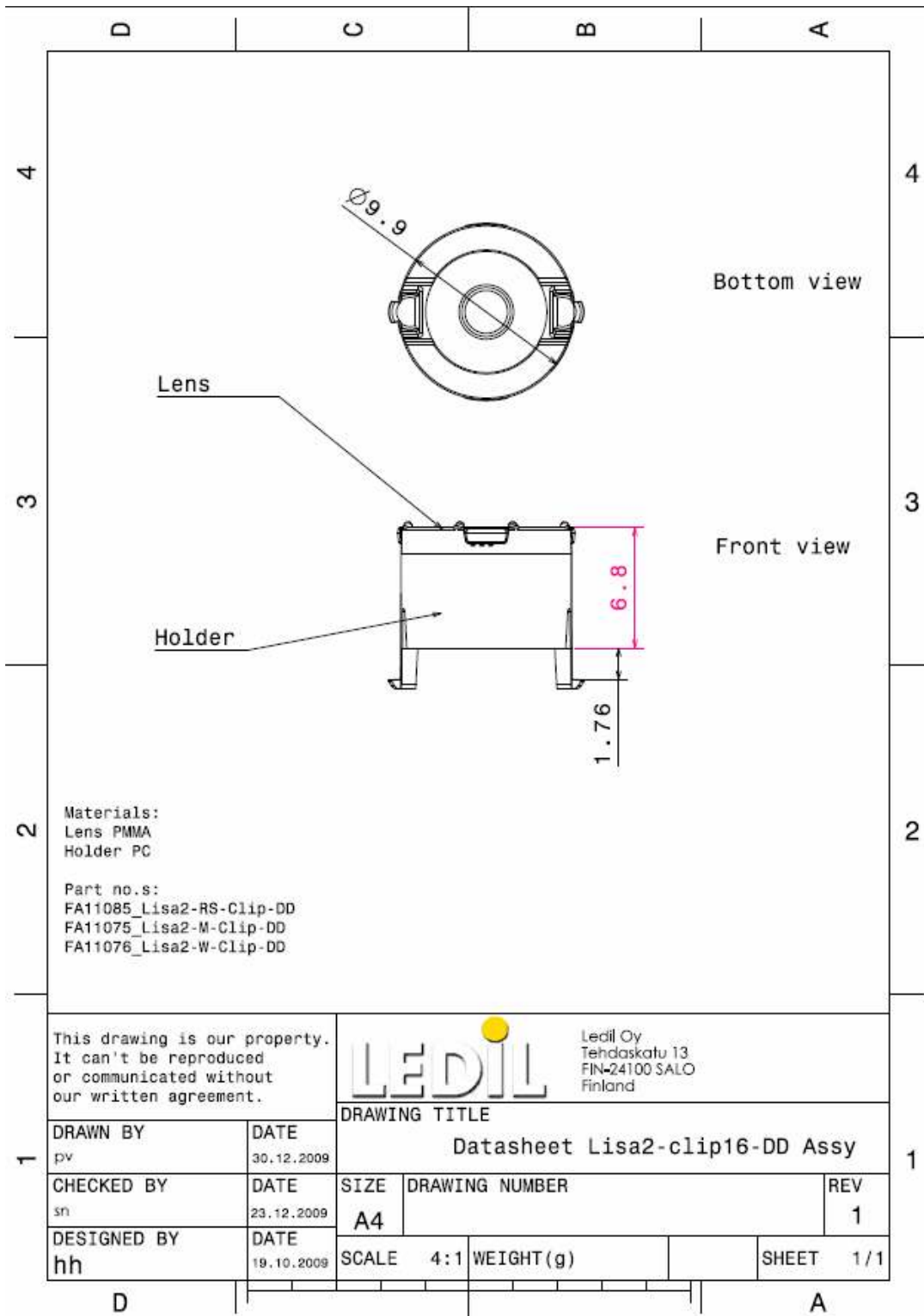
© Ledil Oy – PRELIMINARY - Subject to change without prior notice

Relative Intensity of FA10996\_Lisa2-W-Pin-DD



© Ledil Oy – PRELIMINARY - Subject to change without prior notice

## DRAWINGS



© Ledil Oy – PRELIMINARY - Subject to change without prior notice

## X-ON Electronics

Largest Supplier of Electrical and Electronic Components

*Click to view similar products for [LED Lenses](#) category:*

*Click to view products by [Ledil](#) manufacturer:*

Other Similar products are found below :

[131A-303G](#) [131A-304R](#) [139A-403R](#) [139A-403A](#) [160A-604R](#) [160A-604Y](#) [SMB\\_200\\_GTP](#) [SMQ\\_250\\_ATP](#) [SMS\\_172\\_RTP](#) [SQB\\_400\\_ATP](#)  
[SSN-LX13049L-CD](#) [SSN-LX18754A](#) [SSN-LX18754C](#) [2817](#) [CLR\\_301\\_YTP](#) [CMC\\_313\\_ATP](#) [3121](#) [3124](#) [3125](#) [39-30-W03](#) [4623](#) [4745](#)  
[4747](#) [3111](#) [3114](#) [3115](#) [3121](#) [3122](#) [3124](#) [3125](#) [4327](#) [4743](#) [4745](#) [4752](#) [4757](#) [SSN-LX690L1-C](#) [SQL\\_360\\_YTP](#) [SMQ\\_250\\_BTP](#) [3114](#) [3113](#)  
[CMS444CTP](#) [1125-227-000](#) [4317](#) [4347](#) [4741](#) [4316](#) [4343](#) [4345](#) [4345](#) [4346](#)