

## Tina-Pin-OSL lenses for Osram Oslon SSL LEDs



- Designed & optimized for Osram's Oslon SSL series of LEDs
- Lens material optical grade PC with high UV and temperature resistance (130°C/220°F). Allows use of high current and temperature conditions
- Integrated holder with small position pins. See drawing below for more details
- Best available optical efficiency, over 90%, with an extremely good cutoff of light
- Fastening to heat sink with a PU foam adhesive tape of automotive grade (included)
- Compact dimensions 16.1 x 10.1 mm.

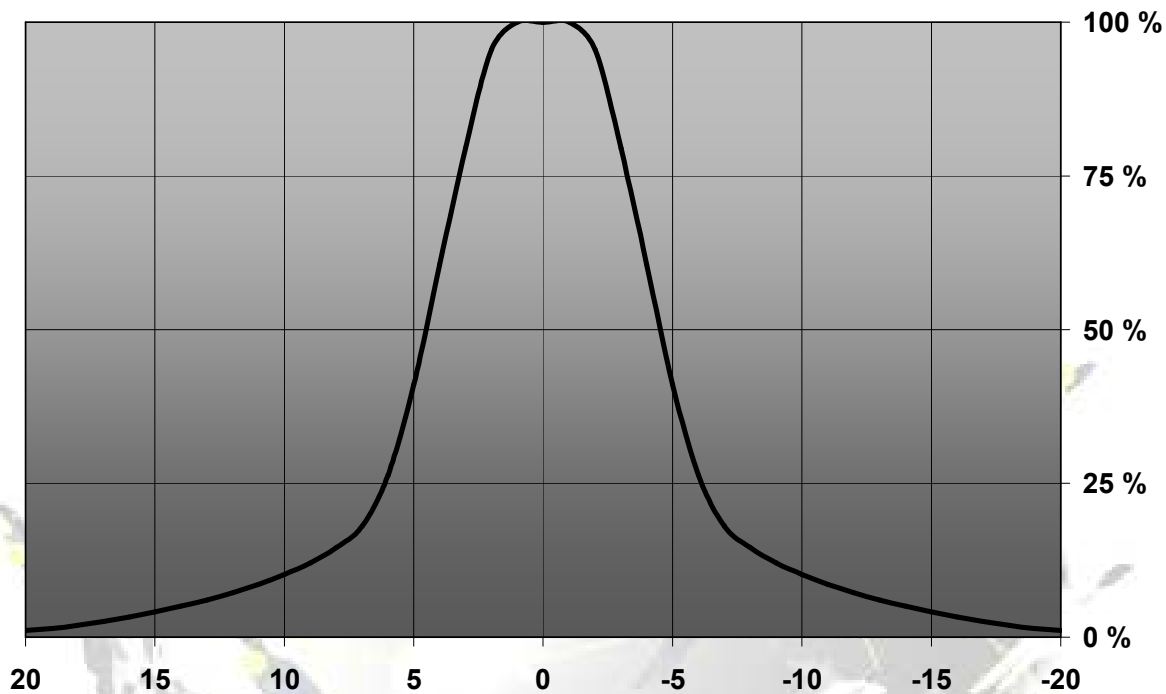
### LENS TYPES

NAME	ORDERING CODE	FWHM Angle
Tina-Pin-OSL Real Spot	FA11208_Tina-RS-OSL	±4.5°
Tina-Pin-OSL Diffuser	FA11205_Tina-D-OSL	±6°
Tina-Pin-OSL Medium	FA11206_Tina-M-OSL	±14°
Tina-Pin-OSL Oval	FA11204_Tina-O-OSL	±6° x ±18°
Tina-Pin-OSL Wide	FA11207_Tina-W-OSL	±19°

© Ledil Oy – PRELIMINARY - Subject to change without prior notice

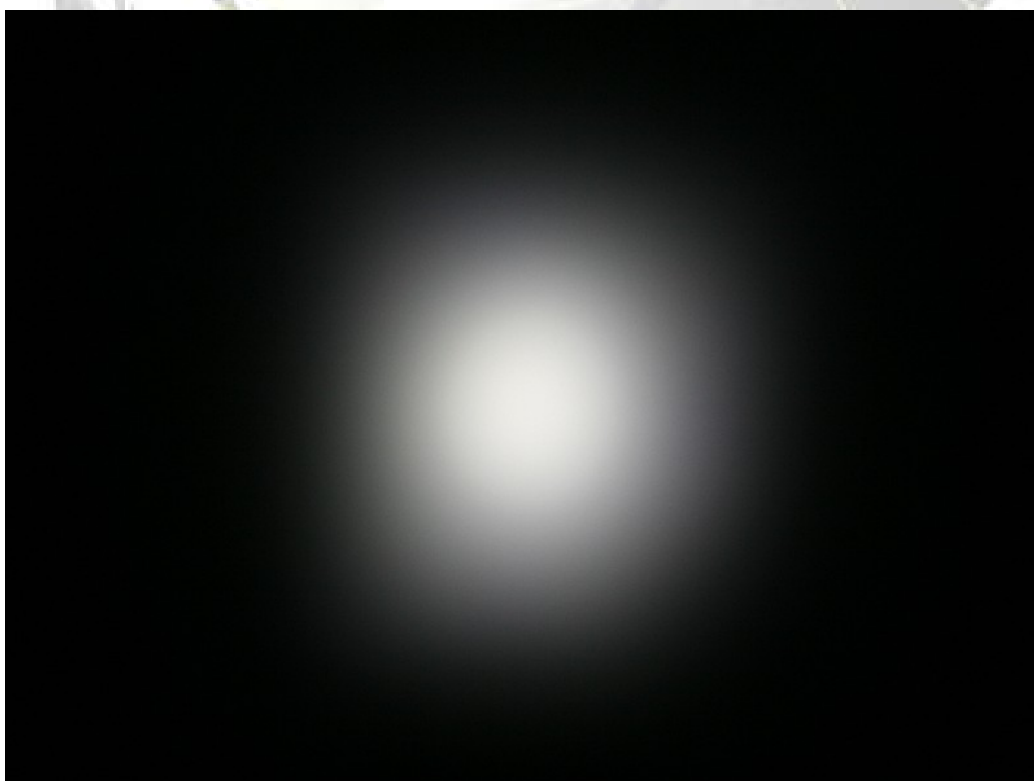
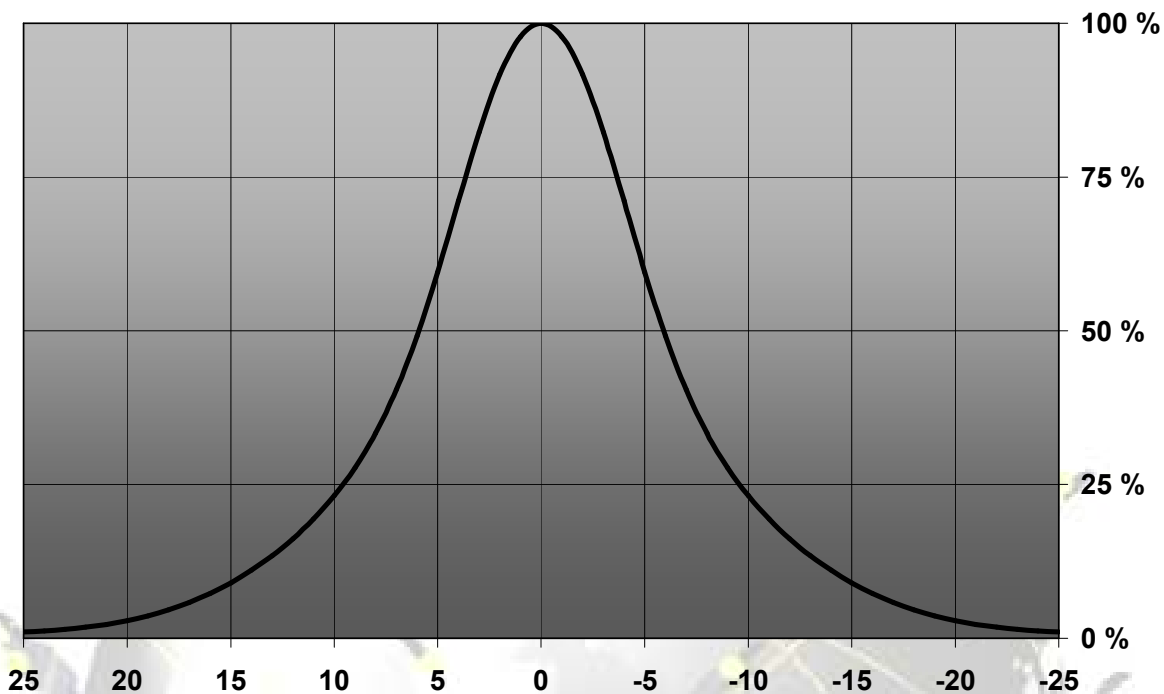
## MEASUREMENTS

Relative Intensity of FA11208\_Tina-RS-OSL



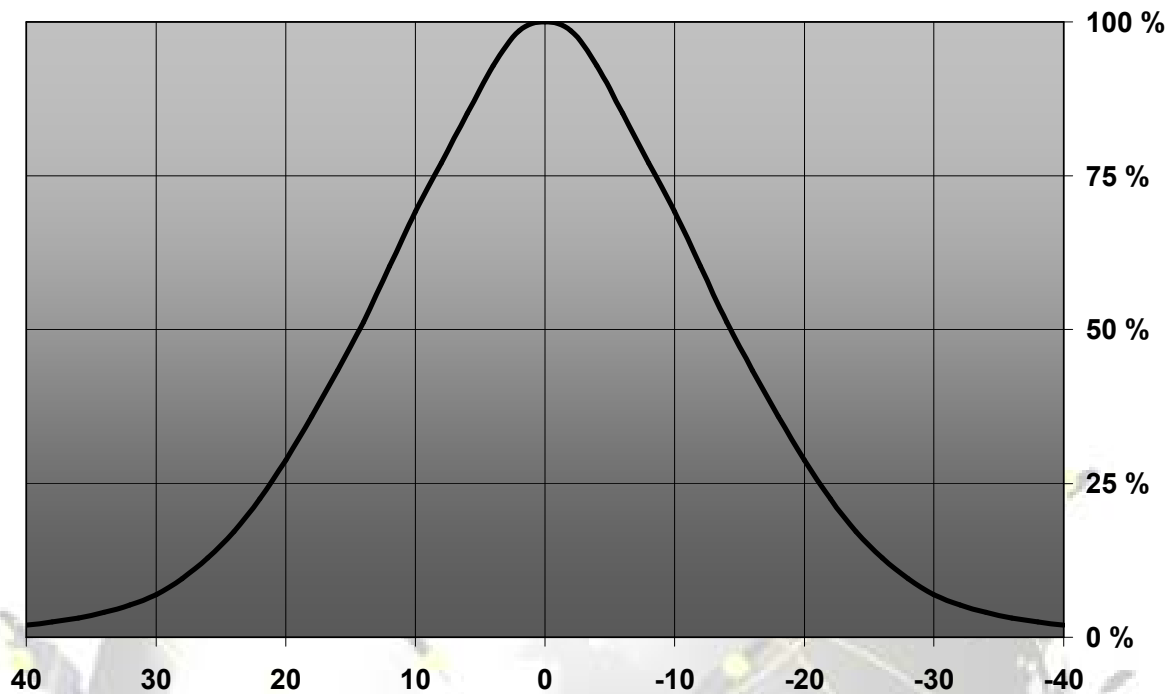
© Ledil Oy – PRELIMINARY - Subject to change without prior notice

Relative Intensity of FA11205\_Tina-D-OSL



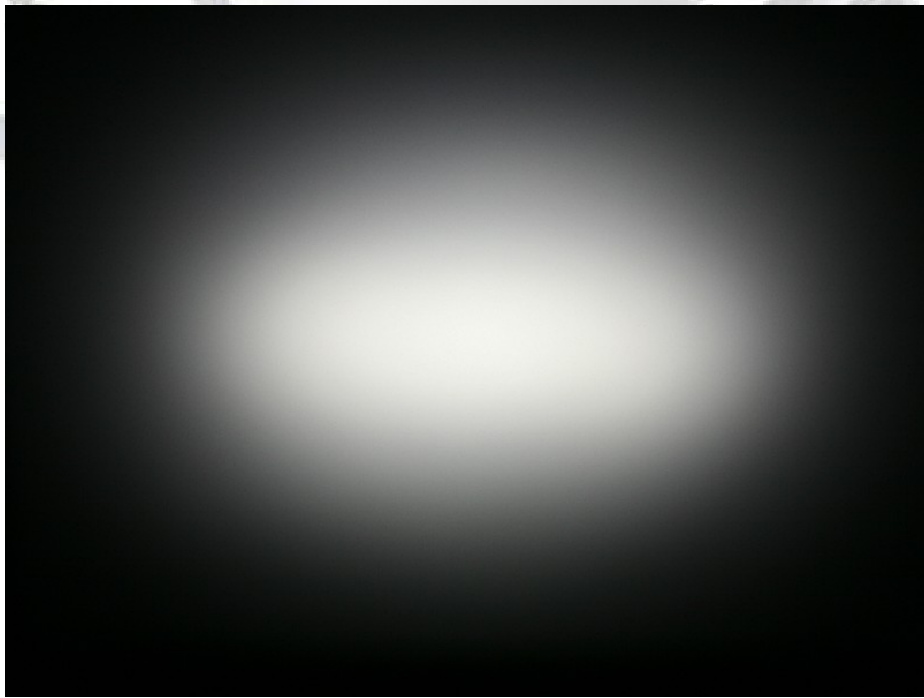
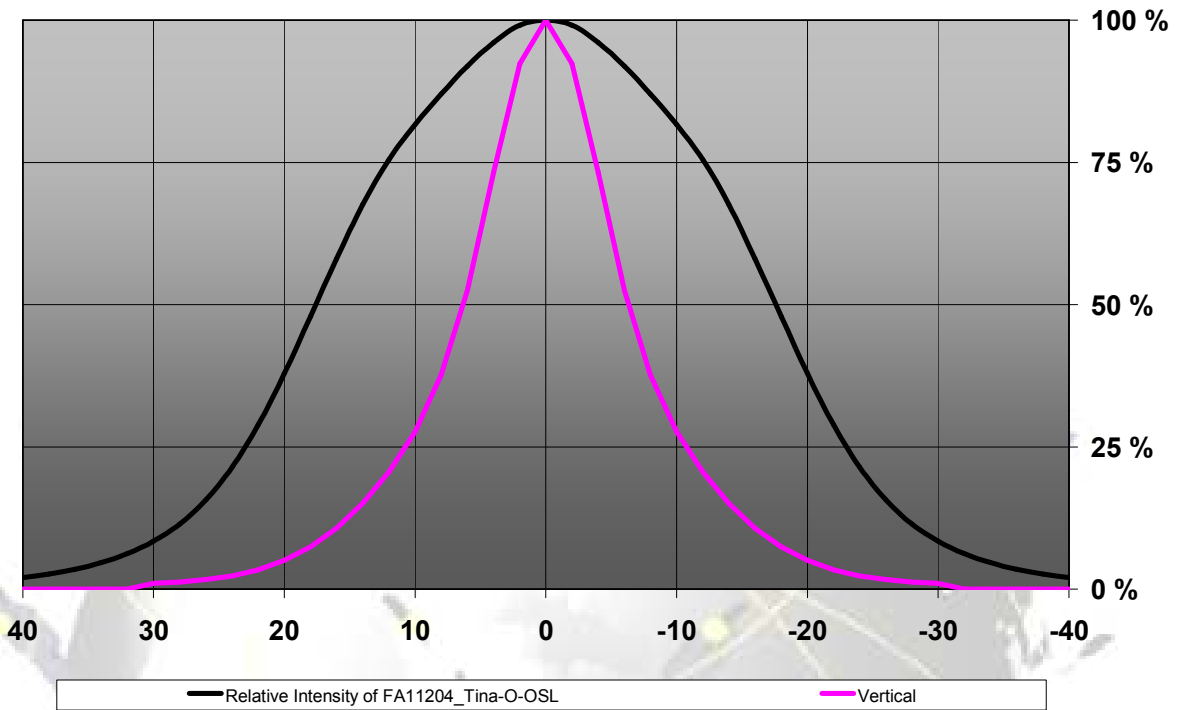
© Ledil Oy – PRELIMINARY - Subject to change without prior notice

Relative Intensity of FA11206\_Tina-M-OSL



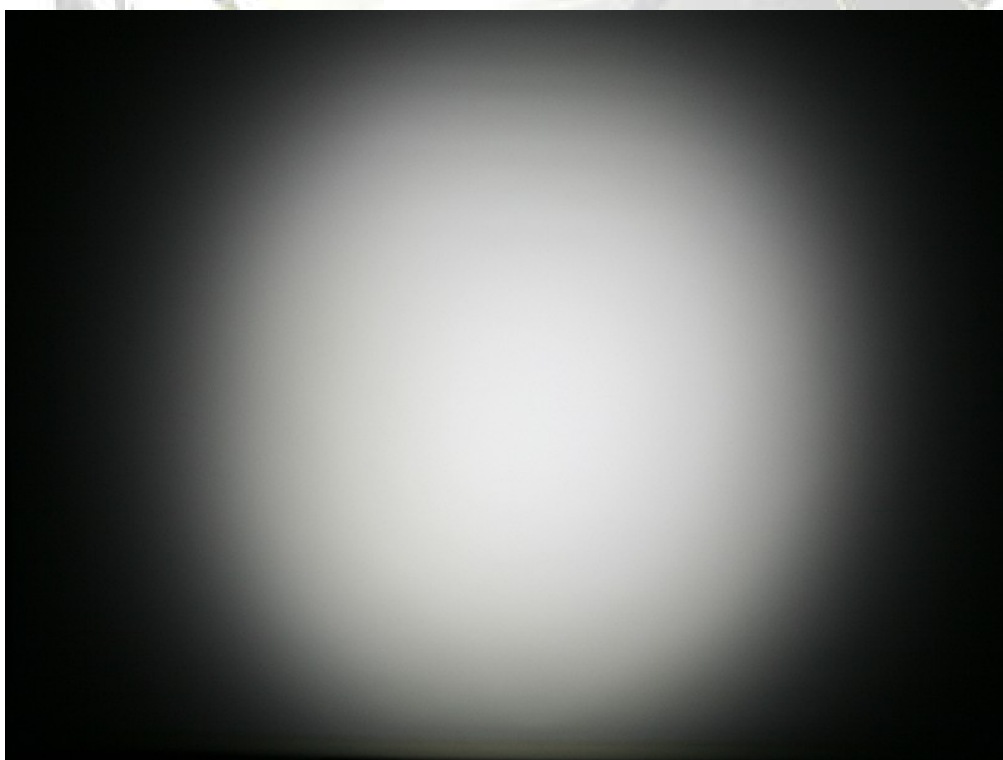
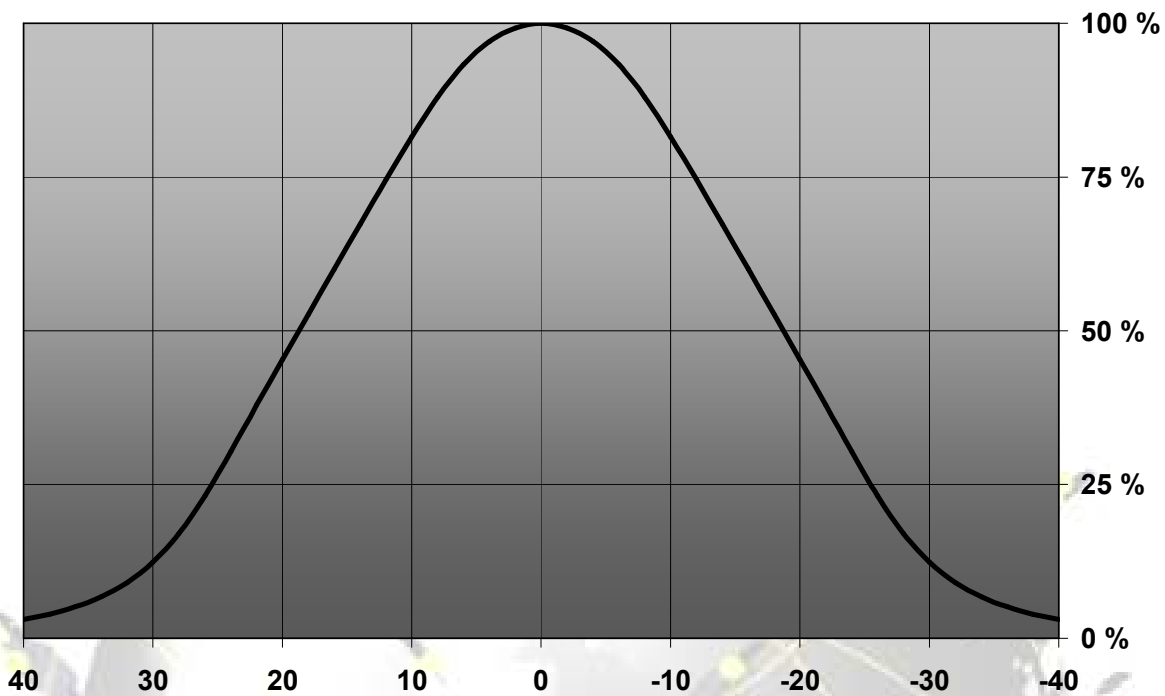
© Ledil Oy – PRELIMINARY - Subject to change without prior notice

Relative Intensity of FA11204\_Tina-O-OSL



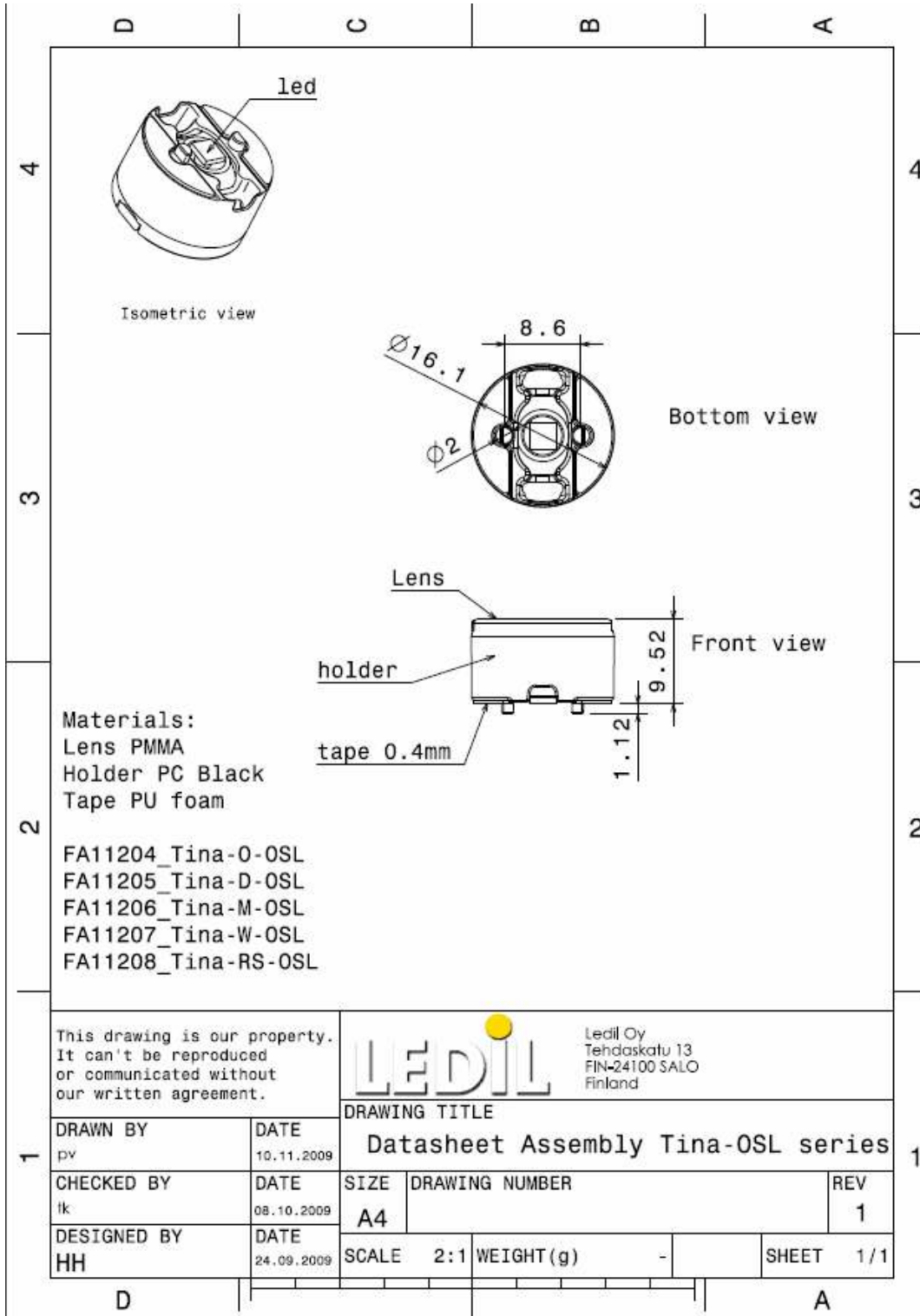
© Ledil Oy – PRELIMINARY - Subject to change without prior notice

Relative Intensity of FA11207\_Tina-W-OSL



© Ledil Oy – PRELIMINARY - Subject to change without prior notice

## DRAWINGS



© Ledil Oy – PRELIMINARY - Subject to change without prior notice

## X-ON Electronics

Largest Supplier of Electrical and Electronic Components

*Click to view similar products for [LED Lenses](#) category:*

*Click to view products by [Ledil](#) manufacturer:*

Other Similar products are found below :

[131A-303G](#) [131A-304R](#) [139A-403R](#) [139A-403A](#) [160A-604R](#) [160A-604Y](#) [SMB\\_200\\_GTP](#) [SMQ\\_250\\_ATP](#) [SMS\\_172\\_RTP](#) [SQB\\_400\\_ATP](#)  
[SSN-LX13049L-CD](#) [SSN-LX18754A](#) [SSN-LX18754C](#) [2817](#) [CLR\\_301\\_YTP](#) [CMC\\_313\\_ATP](#) [3121](#) [3124](#) [3125](#) [39-30-W03](#) [4623](#) [4745](#)  
[4747](#) [3111](#) [3114](#) [3115](#) [3121](#) [3122](#) [3124](#) [3125](#) [4327](#) [4743](#) [4745](#) [4752](#) [4757](#) [SSN-LX690L1-C](#) [SQL\\_360\\_YTP](#) [SMQ\\_250\\_BTP](#) [3114](#) [3113](#)  
[CMS444CTP](#) [1125-227-000](#) [4317](#) [4347](#) [4741](#) [4316](#) [4343](#) [4345](#) [4345](#) [4346](#)