

Category 5e Keystone Panel Mount Coupler



Category 5e Keystone Panel Mount Coupler

Features

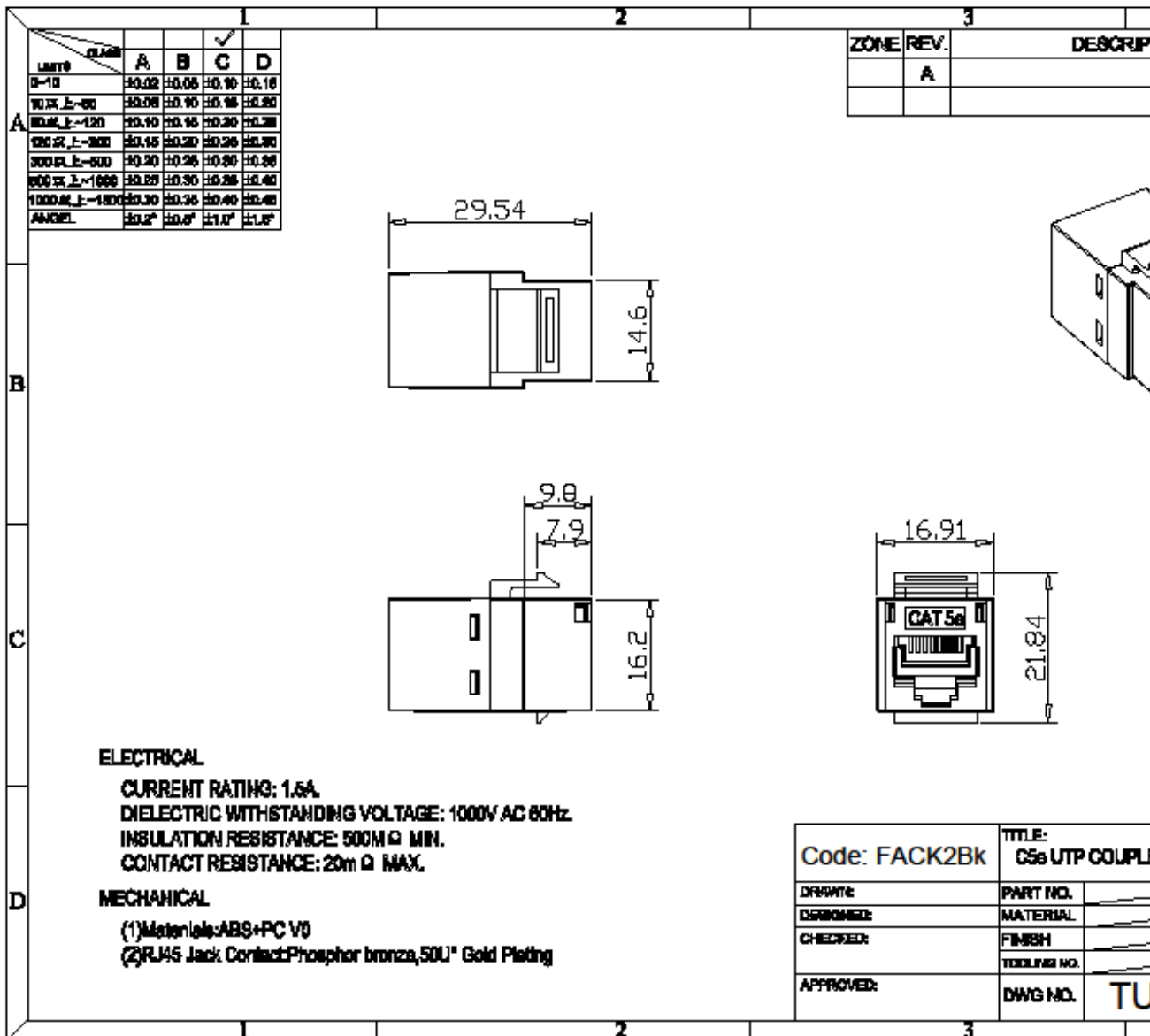
- High performance data throughput, meets Category 5e data transfer rates
- Designed to fit industry standard keystone outlets and patch panels
- Shielded version available (FACKs)
- Compatible 16 and 24 port keystone patch panels available with or without cable management

Specifications

DIMENSIONS (mm) 30.4 x 17.2 x 20.9 approx

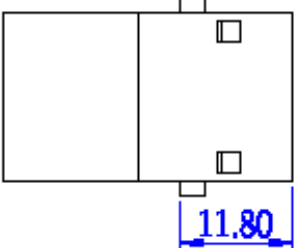
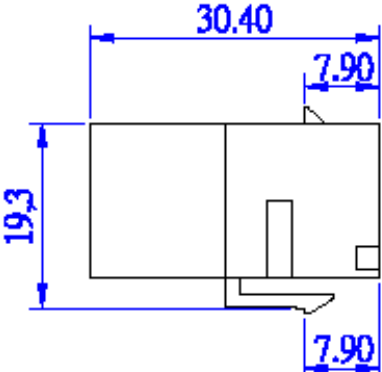
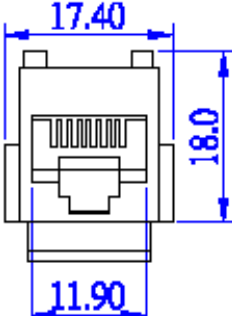
MATERIALS

- Housing: ABS UL94V-0
- Connectors: 50µ"/ 1.27µm gold plating over nickel plated phosphor bronze
- Colour: Black, FACK2Bk and white, FACKWh



TUK Ltd, Unit 4, Wimbledon Stadium Business Centre, Riverside Road, London, SW17 0BA

Tel: 020 8946 6688 Fax: 020 8879 7410 Email: sales@tuk.co.uk Website: www.tuk.co.uk

	1	2	3	4	5										
	ROHS Compliant														
A	Features : <ul style="list-style-type: none"> • RJ45 complies with FCC part 68 standard • Jack insertion life >750 mating cycles • Operating temperature : -40°C~+80°C 														
B	Electrical : <ul style="list-style-type: none"> • Contact resistance : 20m ohm • DC Current rating : 1.5Amps • DC resistance : Max. 0.1 ohm • Insulation Resistance : 500m ohm • Dielectric withstanding voltage : 100V 														
C															
D	<table border="1"> <thead> <tr> <th colspan="2">TOLERANCE</th> </tr> </thead> <tbody> <tr> <td>XXXX</td> <td>—</td> </tr> <tr> <td>XXX</td> <td>0,10</td> </tr> <tr> <td>XX</td> <td>0,25</td> </tr> <tr> <td>X</td> <td>0,38</td> </tr> </tbody> </table>					TOLERANCE		XXXX	—	XXX	0,10	XX	0,25	X	0,38
TOLERANCE															
XXXX	—														
XXX	0,10														
XX	0,25														
X	0,38														
	TECHNICAL DATA														
	CATEGORY		<input checked="" type="checkbox"/> CAT.5E <input type="checkbox"/> CAT.6 <input type="checkbox"/> CAT.3 <input type="checkbox"/> OTHER _____												
	HOUSING		ABS + PC UL94V-0												
	CONTACT		0.45 mm DIAMETER PHOSPHOR BRONZE GOLD PLATED OVER NICKEL												
	GOLD-PLATING		<input type="checkbox"/> 0.0762 um / 3e inch <input type="checkbox"/> 0.15 um / 6e inch <input type="checkbox"/> 0.38 um / 15e inch <input type="checkbox"/> 0.76 um / 30e inch <input checked="" type="checkbox"/> 1.27 um / 50e inch												
	COLOR		<input type="checkbox"/> WHITE <input checked="" type="checkbox"/> BLACK <input type="checkbox"/> GREEN <input type="checkbox"/> BLUE <input type="checkbox"/> YELLOW <input type="checkbox"/> RED <input type="checkbox"/> ORANGE <input type="checkbox"/> IVORY <input type="checkbox"/> OTHER _____												
	TYPE OF PRODUCT		<input checked="" type="checkbox"/> UNSHIELD <input type="checkbox"/> SHIELD : 0.25mm THICKNESS COPPER ALLOY WITH NICKEL PLATED		FACKWh Cat 5e panel m										

Category 5e Keystone Panel Mount Coupler (Shielded)



Category 5e Keystone Panel Mount Coupler (FACKs)

Features

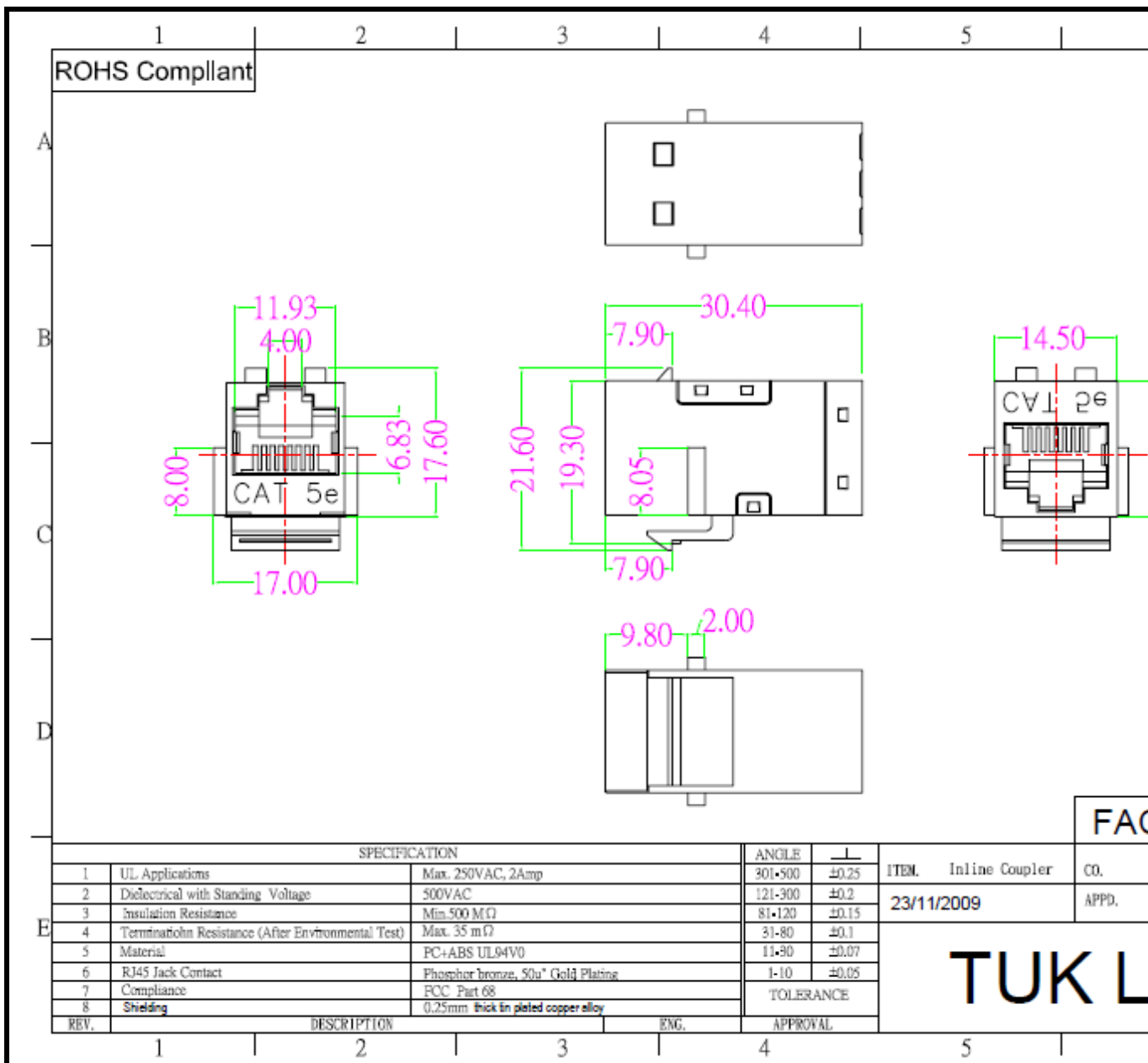
- Designed to fit industry standard keystone sockets and patch panels
- High performance data throughput, meets Category 5e data transfer rates
- Unshielded versions available
- Compatible 16 and 24 port patch panels available with or without cable management

Specifications

DIMENSIONS (mm) 30.4 x 17.2 x 20.9 approx

MATERIALS

- Housing: ABS UL94V-0
- Connectors: 50 μ "/1.27 μ m gold plating over nickel plated phosphor bronze
- Colour: Silver



TUK Ltd, Unit 4, Wimbledon Stadium Business Centre, Riverside Road, London, SW17 0BA

Tel: 020 8946 6688 Fax: 020 8879 7410 Email: sales@tuk.co.uk Website: www.tuk.co.uk

X-ON Electronics

Largest Supplier of Electrical and Electronic Components

Click to view similar products for [Modular Connectors / Ethernet Connectors](#) category:

Click to view products by [Tuk](#) manufacturer:

Other Similar products are found below :

[RJE231881317T](#) [MP1010RX-1000](#) [MP44RX-1000](#) [GAX-3-66](#) [GAX-8-62](#) [93606-0253](#) [GD-A-44](#) [GDCX-PA-66-50](#) [GDCX-PN-64](#) [GDCX-PN-66](#) [GDCX-PN-66-50](#) [GDLX-A-66](#) [GDLX-A-88](#) [GDLX-N-66](#) [GDLX-S-88K](#) [GDTX-S-88-50](#) [GDX-PA-1010](#) [GLX-N-1010M-BLK](#) [GLX-N-44M](#) [GLX-S-88M-BLK](#) [GMX-N-1010](#) [GMX-S-1010](#) [GMX-S-66](#) [GMX-SMT2-N-1010](#) [GMX-SMT2-N-64-50](#) [GMX-SMT2-S6-88](#) [GMX-SMT4-N-88](#) [GPX-2-64](#) [GRT1-BT1-5](#) [GSGX-N-2-88](#) [GSX-NS2-88-3.05](#) [GSX-NS2-88-3.05-50](#) [GSX-NS-88-3.05-30](#) [GSX-NS-88-3.05-50](#) [GSX-NS-88-3.68](#) [1-1775629-2](#) [GWLX-S-88-GR](#) [GWLX-S9-88-YG](#) [1300500326](#) [1300500227](#) [1300530003](#) [1300570002](#) [1324640-4](#) [RJ11FTVC2G](#) [RJ11FTVC2N](#) [RJFTVX2SA1G](#) [132764-001](#) [1400000](#) [1413176](#) [1413235](#)