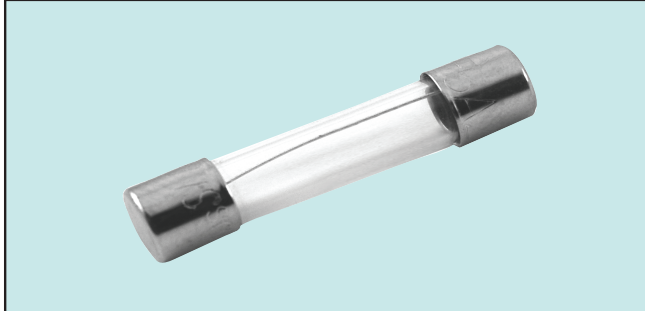


# 3AG Equivalent – 6 x 30mm Miniature Glass

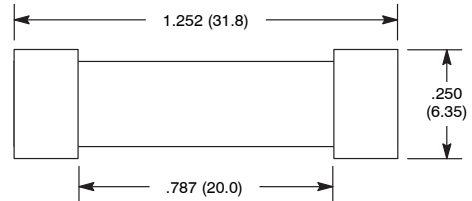


## Features

- Available in Fast Acting and Slow Blow Types
- RoHS Compliant



F-04



## Specifications

**Rated Voltage:** 125V / 250V

**Breaking Capacity:** 125VAC, 10kA; 250VAC, 200A

**Time Current Characteristics:**

### Fast Acting

% of Ampere Rating	Opening Time
110%	4 hours min.
135%	1 hour max.
200%	120 seconds max.

### Slow Blow

% of Ampere Rating	Opening Time	
	100mA to 3A	4A to 20A
110%	4 hours min.	4 hours min.
135%	1 hour max.	1 hour max.
200%	5 – 120 seconds	12 – 120 seconds

## Ordering Information:

NTE Type No.		Rated Current	Diag No.
Fast Acting	Slow Blow		
74-6FG100MA **	74-6SG100MA	100mA	F-04
74-6FG125MA **	74-6SG125MA	125mA	F-04
74-6FG150MA **	74-6SG150MA	150mA	F-04
74-6FG175MA **	74-6SG175MA	175mA	F-04
74-6FG187MA **	74-6SG187MA	187mA	F-04
74-6FG200MA **	74-6SG200MA	200mA	F-04
74-6FG250MA **	74-6SG250MA	250mA	F-04
74-6FG300MA **	74-6SG300MA	300mA	F-04
74-6FG375MA **	74-6SG375MA	375mA	F-04
	74-6SG400MA	400mA	F-04
74-6FG500MA	74-6SG500MA	500mA	F-04
74-6FG600MA	74-6SG600MA	600mA	F-04
74-6FG750MA	74-6SG750MA	750mA	F-04
74-6FG1A	74-6SG1A	1.0A	F-04
74-6FG1.25A	74-6SG1.25A	1.25A	F-04
74-6FG1.5A	74-6SG1.5A	1.5A	F-04
74-6FG1.6A	74-6SG1.6A	1.6A	F-04
74-6FG2A	74-6SG2A	2.0A	F-04
74-6FG2.5A	74-6SG2.5A	2.5A	F-04
74-6FG3A	74-6SG3A	3.0A	F-04
74-6FG4A	74-6SG4A	4.0A	F-04
74-6FG5A	74-6SG5A	5.0A	F-04
74-6FG6A		6.0A	F-04
74-6FG7A	74-6SG7A	7.0A	F-04
74-6FG8A	74-6SG8A	8.0A	F-04
74-6FG10A	74-6SG10A	10A	F-04
	74-6SG12A **	12A	F-04
	74-6SG15A	15A	F-04
	74-6SG20A	20A	F-04

\*\* Not UL Approved.

## X-ON Electronics

Largest Supplier of Electrical and Electronic Components

*Click to view similar products for [nte manufacturer](#):*

Other Similar products are found below :

[747](#) [797](#) [868](#) [NEH680M50FE](#) [NEHH1.0M450CB](#) [NTE48](#) [NTE526A](#) [228A](#) [231](#) [954](#) [2023](#) [510](#) [R04-11A30-120](#) [04-SLPE3750A](#) [5615](#) [591](#)  
[7056](#) [NTE5710](#) [7448](#) [NEH.10M50AA](#) [NEH2.2M63AA](#) [NEH330M35DD](#) [NEH33M10AA](#) [NEV.22M100AA](#) [NTE182](#) [NTE528](#) [NTE542](#)  
[NTE74154](#) [04-SCBW25L-BK](#) [04-SCBW32L-BK](#) [04-SCW10C-BK](#) [04-SCBW19L-GR](#) [04-SCW19L-WH](#) [04-SCW19L-OR](#) [04-SCW38L-WH](#)  
[04-SCBW50L-OR](#) [04-SCBW50L-GR](#) [04-SCW10C-GR](#) [04-SCW10C-OR](#) [04-SCBW32L-GR](#) [04-SCBW32L-WH](#) [04-SCBW32L-OR](#) [04-](#)  
[SCBW6C-WH](#) [04-SCBW6C-GR](#) [04-SCBW6C-OR](#) [04-SCBW25L-GR](#) [04-SCBW25L-WH](#) [04-ESNF-500L](#) [04-SL.625-R-5](#) [04-SCW5C-WH](#)