

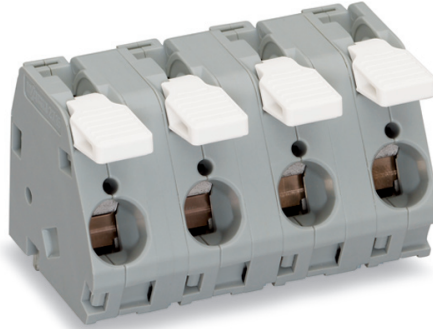
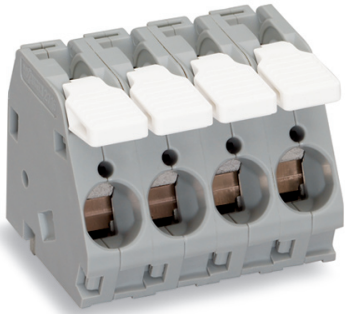









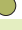
Terminal Strips 16 mm²/AWG 6 without Jumper Slot, Pin Spacings 10 mm/0.394 in and 15 mm/0.591 in; Series 2716



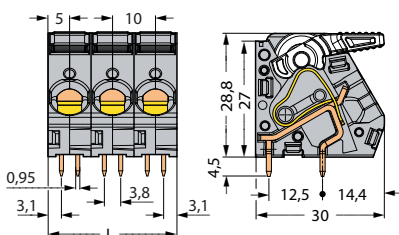
Pin spacing 10 mm / 0.394 in
 1.5 – 16 mm² | AWG 16 – 6
 250 V/4 kV/3; 76 A | 300 V, 55 A \mathbb{N}
 500 V/4 kV/2; 76 A
 12 – 13 mm / 0.49 in

Pin spacing 15 mm / 0.591 in
 1.5 – 16 mm² | AWG 16 – 6
 630 V/8 kV/3; 76 A | 600 V, 65 A \mathbb{N}
 1000 V/8 kV/2; 76 A
 12 – 13 mm / 0.49 in

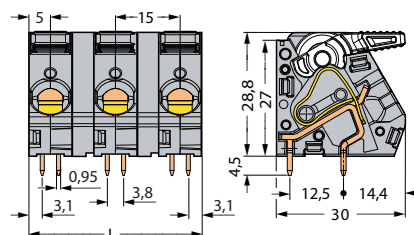


No. of poles	Item no.	Pack.-unit pcs			
Terminal strips, gray, with actuating lever, without jumper slot			Terminal strips, gray, with actuating lever, without jumper slot		
2	2716-102		2	2716-202	
3	2716-103		3	2716-203	
4	2716-104		4	2716-204	
5	2716-105		5	2716-205	
6	2716-106		6	2716-206	
7	2716-107		7	2716-207	
8	2716-108		8	2716-208	
Other numbers of poles and pin spacings on request Additional item nos. for colored terminal blocks:			For other lengths, please contact factory Additional item nos. for colored terminal blocks:		
blue	... /000-006		blue	... /000-006	
light gray	... /000-009		light gray	... /000-009	
green-yellow	... /000-016		green-yellow	... /000-016	
light green	... /000-017		light green	... /000-017	

Dimensions (in mm)



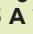
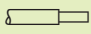
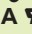
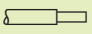
Diameter of drilled hole: 1.6^{+0.1} mm
 L = (No. of poles x pin spacing) + 1.5 mm

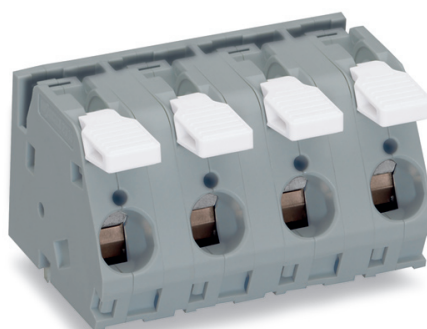
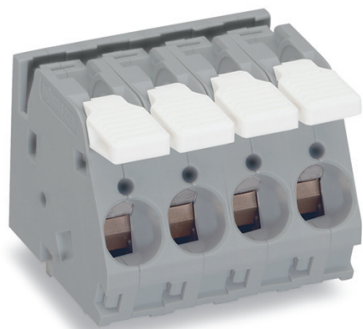




















Diameter of drilled hole: 1.6^{+0.1} mm
 L = (No. of poles x pin spacing) + 1.5 mm

Terminal Strips 16 mm²/AWG 6 with Jumper Slot, Pin Spacings 10 mm/0.394 in and 15 mm/0.591 in; Series 2716

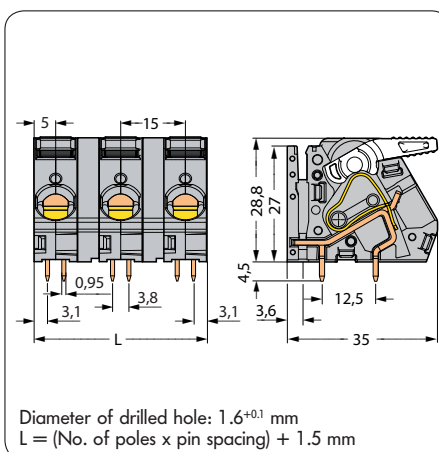
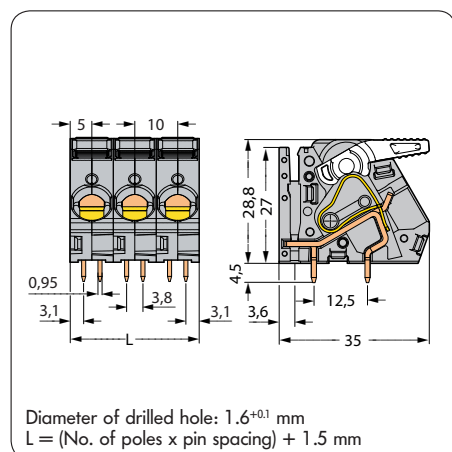
CAGE CLAMP®

Pin spacing 10 mm / 0.394 in 1.5 – 16 mm ² AWG 16 – 6 250 V/4 kV/3; 76 A 300 V, 55 A  500 V/4 kV/2; 76 A  12 – 13 mm / 0.49 in	Pin spacing 15 mm / 0.591 in 1.5 – 16 mm ² AWG 16 – 6 630 V/8 kV/3; 76 A 600 V, 65 A  1000 V/8 kV/2; 76 A  12 – 13 mm / 0.49 in
--	---



No. of poles	Item no.	Pack.-unit			
Terminal strips, gray, with actuating lever, with jumper slot			Terminal strips, gray, with actuating lever, with jumper slot		
2	2716-152		2	2716-252	
3	2716-153		3	2716-253	
4	2716-154		4	2716-254	
5	2716-155		5	2716-255	
6	2716-156		6	2716-256	
7	2716-157		7	2716-257	
8	2716-158		8	2716-258	
Other numbers of poles and pin spacings on request Additional item nos. for colored terminal blocks:			For other lengths, please contact factory Additional item nos. for colored terminal blocks:		
blue	... / 000-006 		blue	... / 000-006 	
light gray	... / 000-009 		light gray	... / 000-009 	
green-yellow	... / 000-016 		green-yellow	... / 000-016 	
light green	... / 000-017 		light green	... / 000-017 	
 Comb type jumper bar 1 to 3 745-682 200 (4x50)			 Comb type jumper bar 1 to 3 745-631 200 (4x50)		
 2-way 745-582 200 (4x50)			 2-way 745-632 200 (4x50)		
 3-way 745-583 200 (4x50)			 3-way 745-633 200 (4x50)		
 4-way 745-584 200 (4x50)			 4-way 745-634 200 (4x50)		
 5-way 745-585 200 (4x50)			 5-way 745-635 200 (4x50)		

Dimensions (in mm)



X-ON Electronics

Largest Supplier of Electrical and Electronic Components

Click to view similar products for [wago](#) manufacturer:

Other Similar products are found below :

[750-460](#) [231-118/026-000](#) [231-303/026-000](#) [231-620/019-000](#) [257-403](#) [280-438](#) [280-831](#) [284-624](#) [210-111](#) [231-303/037-000](#) [231-446/001-000_NR](#) [232-216/026-000](#) [234-510](#) [264-726](#) [280-339](#) [0283-0671](#) [830-800/000-305](#) [750-512](#) [750-455](#) [51251782](#) [286-312](#) [713-1428/107-000](#) [731-138/048-000](#) [750-459](#) [750-517](#) [793-3505](#) [826-172](#) [859-304](#) [280-335](#) [231-535/001-000](#) [2604-1106](#) [2604-1504](#) [2606-1103/020-000](#) [2624-1103](#) [2626-3103/020-000](#) [821-104](#) [713-1107](#) [852-1411](#) [2106-1307](#) [2116-5307](#) [832-1205](#) [832-3604](#) [2009-110](#) [281-512/281-501](#) [286-336](#) [750-421](#) [750-838](#) [753-559](#) [750-1505](#) [787-732](#)