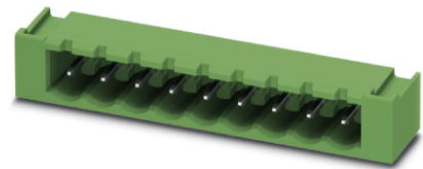



**MSTBA 2,5/ 6-G-5,08-LR**

Order No.: 1809115

<http://eshop.phoenixcontact.co.uk/phoenix/treeViewClick.do?UID=1809115>

Header, Nominal current: 12 A, Rated voltage (III/2): 320 V, Number of positions: 6, Pitch: 5.08 mm, Color: green, Contact surface: Tin, Assembly: Soldering

**Commercial data**

|                        |   |
|------------------------|---|
| EAN                    |  |
| Note                   | Made-to-order   |
| Pack                   | 50  |
| Customs tariff         | 85366990  |
| Gross weight in pieces | 3.54 g  |
| Country of Origin      | DE  |

**Product notes**

WEEE/RoHS-compliant since:  
23/09/2011



Please note that the data given here has been taken from the online catalog. For comprehensive information and data, please refer to the user documentation at <http://www.download.phoenixcontact.com>. The General Terms and Conditions of Use apply to Internet downloads.

**Technical data****Dimensions / positions**

|                     |         |
|---------------------|---------|
| Length              | 12 mm   |
| Height              | 11.9 mm |
| Pitch               | 5.08 mm |
| Dimension a         | 25.4 mm |
| Number of positions | 6       |

|                |          |
|----------------|----------|
| Pin dimensions | 1 x 1 mm |
| Hole diameter  | 1.4 mm   |

#### Technical data

|   |                    |
|---|--------------------|
| Range of articles                       | MSTBA 2,5/...-G-LR |
| Insulating material group               | IIIa               |
| Rated surge voltage (III/3)             | 4 kV               |
| Rated surge voltage (III/2)             | 4 kV               |
| Rated surge voltage (II/2)              | 4 kV               |
| Rated voltage (III/2)                   | 320 V              |
| Rated voltage (II/2)                    | 400 V              |
| Connection in acc. with standard        | EN-VDE             |
| Nominal current $I_N$                   | 12 A               |
| Nominal voltage $U_N$                   | 250 V              |
| Maximum load current                    | 12 A               |
| Insulating material                     | PBT                |
| Inflammability class according to UL 94 | V0                 |
| Color                                   | green              |
| Nominal voltage, UL/CUL Use Group B     | 300 V              |
| Nominal current, UL/CUL Use Group B     | 15 A               |
| Nominal voltage, UL/CUL Use Group D     | 300 V              |
| Nominal current, UL/CUL Use Group D     | 15 A               |

#### Certificates



Certification

cULus Recognized

Certifications applied for:

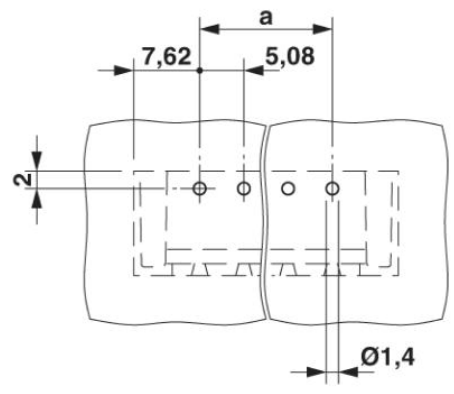
Certification Ex:

**Accessories**

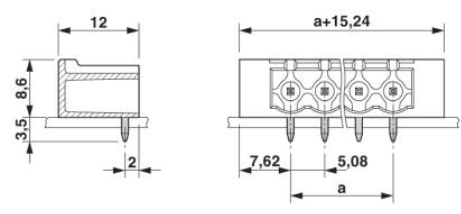
| Item                | Designation              | Description  |
|---------------------|--------------------------|--|
| <b>Assembly</b>     |                          |  |
| 1755477             | MSTB-BL                  | Keying cap, for forming sections, plugs onto header pin, green insulating material   |
| <b>Marking</b>      |                          |  |
| 0804293             | SK 5,08/3,8:FORTL.ZAHLEN | Marker cards, Card, white, labeled, Horizontal: Consecutive numbers 1 - 10, 11 - 20, etc. up to 91 - (99)100, Mounting type: Adhesive, For terminal block width: 5.08 mm |
| <b>Plug/Adapter</b> |                          |  |
| 1734401             | CR-MSTB                  | Coding section, inserted into the recess in the header or the inverted plug, red insulating material   |

**Drawings**

Drilling plan/solder pad geometry



Dimensioned drawing



**Address**

PHOENIX CONTACT Ltd  
Halesfield 13  
Telford / Shropshire / TF7 4PG,England  
Phone 01952 681 700  
Fax 01952 681 799  
<http://www.phoenixcontact.co.uk>



Phoenix Contact Ltd.  
Technical modifications reserved;

## X-ON Electronics

Largest Supplier of Electrical and Electronic Components

*Click to view similar products for [phoenix contact](#) manufacturer:*

Other Similar products are found below :

[1203259](#) [3240366](#) [1893300](#) [1623633](#) [2814605](#) [3240098](#) [0201391](#) [CRIMPFOX 16 S](#) [CRIMPSET 25](#) [7001438](#) [ETD-BL-1T-F-300S](#) [MCR-1CLP-I-I-00](#) [MCR-4CLP-I-I-00](#) [MCR-DAC 8-I- 4-BUS](#) [FL EPA WMS](#) [FLK 50/EZ-DR/ 400/KONFEK/S](#) [FLS PB M12 DO 8 M12-2A](#) [PPS CD BLADE](#) [PSI-MOS-DNET CAN/FO 660/BM](#) [PSM-ME-RS232/RS232-P](#) [PSM PTK-4](#) [PSM-SET-FSMA/4-KT](#) [PSR-SCP-24DC/TS/SDI8/SDIO](#) [PSR-SCP- 24DC/URD3/4X1/2X2](#) [PT 2X2- 5DC-ST](#) [1202580](#) [1203534](#) [1205985](#) [1206308](#) [1207420](#) [QUINT-BAT/24DC/12AH](#) [1204038](#) [1212041](#) [1212096](#) [1212162](#) [1212171](#) [1212202](#) [1212250](#) [1212304](#) [1212380](#) [1212480](#) [1212485](#) [1212488](#) [1212500](#) [1212511](#) [1212578](#) [1212584](#) [1212585](#) [1212592](#) [1212646](#)