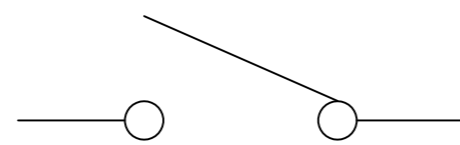
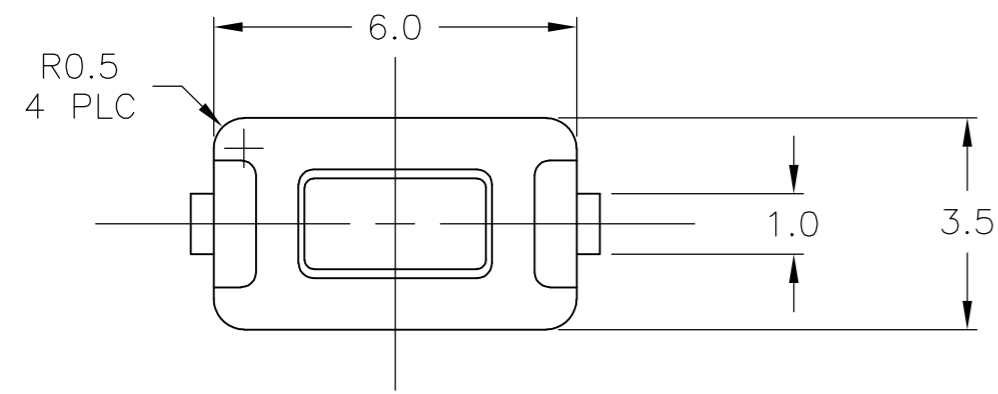


THIS DRAWING IS UNPUBLISHED. RELEASED FOR PUBLICATION
 © COPYRIGHT - By - ALL RIGHTS RESERVED.

| LOC | | DIST | | REVISIONS | | | |
|-----|-----|---------------------------|--|-----------|-----|------|--|
| P | LTR | DESCRIPTION | | DATE | DWN | APVD | |
| | K3 | REVISED PER ECO-11-024681 | | 15MAR12 | KH | PO | |



CIRCUIT DIAGRAM

MATERIALS:

CASE: PPS, 30% GLASS, UL94V-0, COLOR-BROWN
 COVER: STAINLESS STEEL
 ACTUATOR: PPS COLOR: BLACK
 MOVING CONTACT: STAINLESS STEEL, SILVER PLATE
 FIXED CONTACT/TERMINAL: COPPER ALLOY, SILVER OR TIN OVER NICKEL

ELECTRICAL:

MAX CONTACT RATING: 50MILLIAMPS@24V DC
 MIN CONTACT RATING: 10MICROAMPS@1V DC
 INITIAL CONTACT RESISTANCE: 100 MILLIOHMS MAX
 INSULATION RESISTANCE: 100 MEGAOHMS @ 100 VDC MIN
 DIELECTRIC STRENGTH: 500 VDC 50/60 HZ FOR 1 MINUTE
 LIFE EXPECTANCY: UP TO 40,000 CYCLES

MECHANICAL:

ACTUATION FORCE: 180±50gf
 ACTUATION TRAVEL: 0.25 +0.2/-0.1

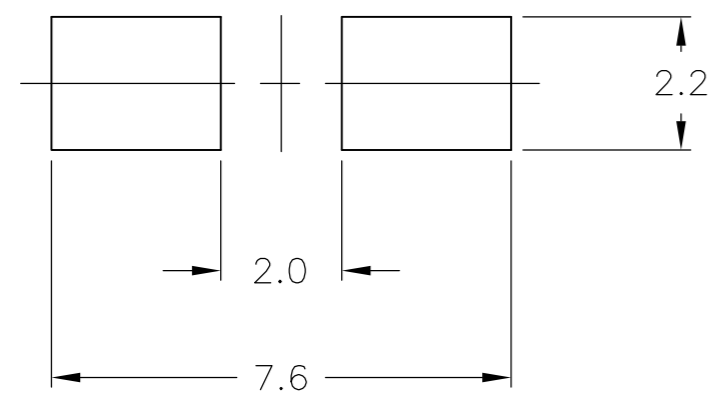
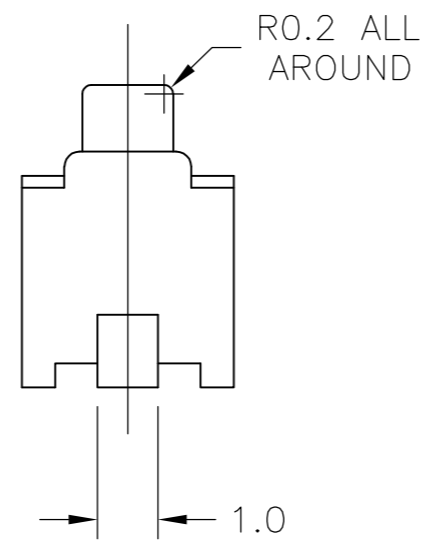
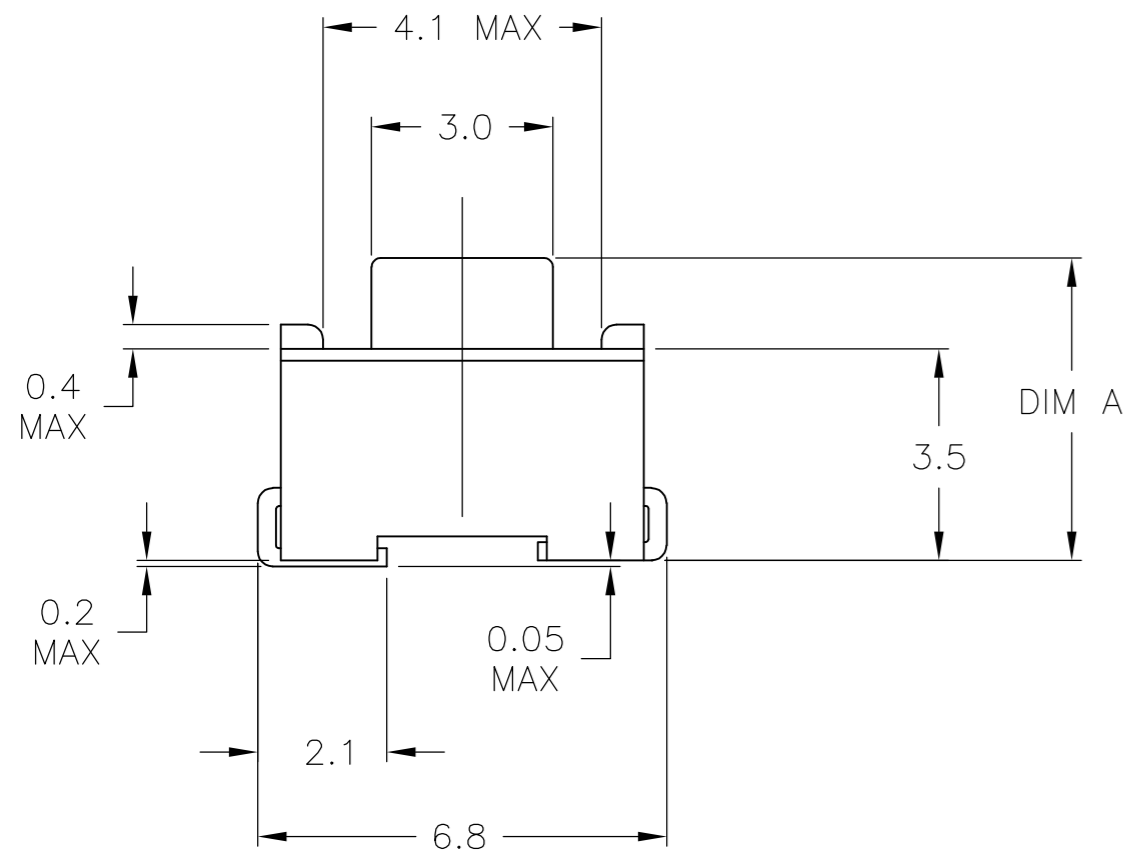
ENVIRONMENTAL:

OPERATING TEMPERATURE: -35°C TO +85°C
 STORAGE TEMPERATURE: -35°C TO +85°C
 SOLDERABILITY: PER EIA-364-52, CLASS 1, CATEGORY 2
 SOLDER HEAT RESISTANCE: PER 109-201, CONDITION B

PACKAGING:

TAPE AND REEL PACKAGING PER EIA 481, 2000 PER REEL
 TAPE WIDTH 16mm PITCH 8mm

- 1 PRELIMINARY PART - NOT RELEASED FOR PRODUCTION.
- 2. ALL MATERIALS AND FINISHES SHALL COMPLY WITH EU DIRECTIVE 2002/95/EC OF 27JAN2003 (ROHS)
- 3 OBSOLETE PARTS: OBSOLETE CIS STREAMLINING PER D.RENAUD/D.SINISI



SOLDER LAND DIMENSION

| | | | | | |
|---|----------|--------|-------|----------------|-------------|
| 3 | OBSOLETE | Tin | 4.3 | FSM1JMSN TR | 147873-5 |
| 3 | OBSOLETE | Tin | 5.0 | FSM2JMSN TR | 147873-4 |
| | | Silver | 4.3 | FSM1JMTR | 147873-2 |
| | | Silver | 5.0 | FSM2JMTR | 147873-1 |
| | | Finish | DIM A | Alcoswitch P/N | Part Number |

| | | | | | |
|--|--|-------------------|-----------|------------------------------|--|
| THIS DRAWING IS A CONTROLLED DOCUMENT. | | DWN R BROWN | 03OCT01 | STE TE Connectivity | |
| DIMENSIONS: mm | | CHK H WYNKOOP | 03OCT2001 | | |
| TOLERANCES UNLESS OTHERWISE SPECIFIED: | | APVD H WYNKOOP | 03OCT2001 | NAME SWITCH, TACTILE, SMT | |
| 0 PLC ± - | | PRODUCT SPEC | | SIZE | |
| 1 PLC ± 0.3 | | APPLICATION SPEC | | CAGE CODE | |
| 2 PLC ± - | | FINISH | | DRAWING NO | |
| 3 PLC ± - | | MATERIAL | | RESTRICTED TO | |
| 4 PLC ± - | | WEIGHT | | A2 00779 | |
| ANGLES ± 0°-30° | | CUSTOMER DRAWING | | SCALE 8:1 | |
| SEE NOTES | | SEE NOTES | | SHEET 1 of 1 | |
| | | | | REV K3 | |

X-ON Electronics

Largest Supplier of Electrical and Electronic Components

Click to view similar products for te connectivity manufacturer:

Other Similar products are found below :

[570416-000](#) [CLTEQ-M81CE-SSRELAY-4-20V](#) [4-1633138-8](#) [D38999/24FJ4AN](#) [358838-000](#) [4-1195131-0](#) [650069-000](#) [SMD100-2](#)
[2EDL4CM](#) [DTS20W19-11PD-3028](#) [DTS20W19-11PD-3028-LC](#) [DTS20W19-32SD-3028-LC](#) [DTS20W19-32SD-3028](#) [NC6-P104-06](#)
[TXR64AB90-3616AI](#) [DTS26F21-41HE](#) [DTS26F21-41AE](#) [DTS26F21-41PE-LC](#) [DTS26F21-11SE-3028-LC](#) [5-2027513-8](#) [D38999/20JB35HA](#)
[D38999/24WJ20PA](#) [164-8033-08](#) [D38999/24WG11HA](#) [D38999/24WG11HN](#) [MS27467T21F11H](#) [DJT16E21-11HA](#) [1-532955-3](#)
[DTS20W19-32SA-3028-LC](#) [DTS24F19-11SC-3028-LC](#) [DTS24F19-11SC-3028](#) [D38999/20WC8BB](#) [1-330599-5](#) [DTS24F21-41HN-LC](#)
[DTS24F21-41HN](#) [DTS24F21-41AN](#) [DTS24F21-39HN](#) [DTS24F21-41PN-LC](#) [AFD50-10-6SN-1A-LC](#) [DBAS 70-7-0 SN 090-1A SCC](#)
[ACT20JE99HA](#) [DJT16F17-26HB](#) [MS27467T21F35J](#) [MS27467T21F11J](#) [MS27467T21F16H-LC](#) [MS27467T21F35H](#) [MS27467T21F41H-LC](#)
[DJT16E21-11PA-LC](#) [DJT16E21-11HA-LC](#) [DJT16E21-11AA](#)