

Item #	Description	1-9	10-24	25-99	100-249	250-499
RoHS Category 5E and Category 6 Keystone Jacks - 110 / RJ45 EIA568A/B						
These unique panel mount RJ45 connector kits allow keystone style 110 IDC connectors to be mounted into panels thicker than 0.062". Packaged as a kit, including the flange, two 4-40 screws, and one RJ45 Cat 5E or Cat 6 jack.						
ECF110C5E-BLK	Category 5E Keystone Jack, 110 / RJ45 (8x8) 568A/B Black	5.95	5.83	5.59	5.24	4.46
ECF110C5E-BL	Category 5E Keystone Jack, 110 / RJ45 (8x8) 568A/B Blue	5.95	5.83	5.59	5.24	4.46
ECF110C5E-IV	Category 5E Keystone Jack, 110 / RJ45 (8x8) 568A/B Ivory	5.95	5.83	5.59	5.24	4.46
ECF110C5E-WT	Category 5E Keystone Jack, 110 / RJ45 (8x8) 568A/B White	5.95	5.83	5.59	5.24	4.46
ECF110C5E-YL	Category 5E Keystone Jack, 110 / RJ45 (8x8) 568A/B Yellow	5.95	5.83	5.59	5.24	4.46
ECF110C5E-S	Shielded Cat. 5E Keystone Jack, 110 / RJ45 (8x8) 568A/B Silver	6.95	6.81	6.53	6.12	5.21
ECF110C6-BLK	Category 6 Keystone Jack, 110 / RJ45 (8x8) 568A/B Black	7.95	7.79	7.47	7.00	5.96
ECF110C6-BL	Category 6 Keystone Jack, 110 / RJ45 (8x8) 568A/B Blue	7.95	7.79	7.47	7.00	5.96
ECF110C6-IV	Category 6 Keystone Jack, 110 / RJ45 (8x8) 568A/B Ivory	7.95	7.79	7.47	7.00	5.96
ECF110C6-WT	Category 6 Keystone Jack, 110 / RJ45 (8x8) 568A/B White	7.95	7.79	7.47	7.00	5.96
ECF110C6-YL	Category 6 Keystone Jack, 110 / RJ45 (8x8) 568A/B Yellow	7.95	7.79	7.47	7.00	5.96
ECF110C6-S	Shielded Cat. 6 Keystone Jack, 110 / RJ45 (8x8) 568A/B Silver	8.95	8.77	8.41	7.88	6.71

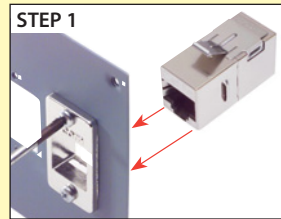
RoHS Category 5E and Category 6 Tool-less Keystone Jacks - RJ45 EIA568A/B						
The ECFTL series of panel mount RJ45 connector kits allow L-com's tool-less RJ45 keystone connectors to mount into panels thicker than 0.062". Packaged as a kit, including the flange, two 4-40 screws, and one RJ45 Cat 5E or Cat 6 jack.						
ECF110C5E-BLK	Category 5E Keystone Jack, 110 / RJ45 (8x8) 568A/B Black	8.95	8.77	8.41	7.88	6.71
ECF110C5E-IV	Category 5E Keystone Jack, 110 / RJ45 (8x8) 568A/B Ivory	8.95	8.77	8.41	7.88	6.71
ECF110C5E-WT	Category 5E Keystone Jack, 110 / RJ45 (8x8) 568A/B White	8.95	8.77	8.41	7.88	6.71
ECF110C6-BLK	Category 6 Keystone Jack, 110 / RJ45 (8x8) 568A/B Black	9.95	9.75	9.35	8.76	7.46
ECF110C6-IV	Category 6 Keystone Jack, 110 / RJ45 (8x8) 568A/B Ivory	9.95	9.75	9.35	8.76	7.46
ECF110C6-WT	Category 6 Keystone Jack, 110 / RJ45 (8x8) 568A/B White	9.95	9.75	9.35	8.76	7.46

RoHS Premium Panel Mounted Modular Coupler Kits - Category 3, 5E and 6 - Shielded and Unshielded						
These unique coupler kits allow panel mounting in virtually any panel thickness. A solid die-cast metal mounting frame provides secure mounting and reliable grounding. Kits include a snap-in coupler, mounting frame and two 4-40 machine screw.						
ECF504-C3	Category 3 Unshielded RJ45 (8x8) Deluxe Panel Coupler Kit	6.95	6.39	5.84	5.28	4.73
ECF504-SC3	Category 3 Shielded RJ45 (8x8) Deluxe Panel Coupler Kit	8.95	8.23	7.52	6.80	6.09
ECF504-C5E	Category 5E Unshielded RJ45 (8x8) Deluxe Panel Coupler Kit	9.95	9.15	8.36	7.56	6.77
ECF504-SC5E	Category 5E Shielded RJ45 (8x8) Deluxe Panel Coupler Kit	11.95	10.99	10.04	9.08	8.13
ECF504-C6	Category 6 Unshielded RJ45 (8x8) Deluxe Panel Coupler Kit	11.95	10.99	10.04	9.08	8.13
ECF504-SC6	Category 6 Shielded RJ45 (8x8) Deluxe Panel Coupler Kit	13.95	12.83	11.72	10.60	9.49

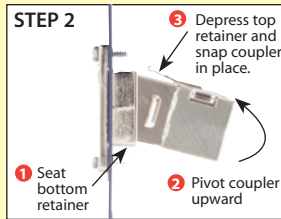
Easily install a premium ECF coupler kit



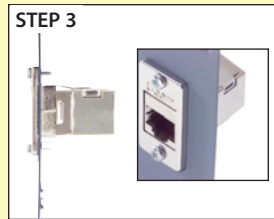
www.L-com.com/Videos/A09



Secure frame in specified opening with supplied hardware and align coupler in proper orientation to the opening.



Seat bottom retainer and pivot coupler upward while depressing upper retainer.



Coupler fully seated.

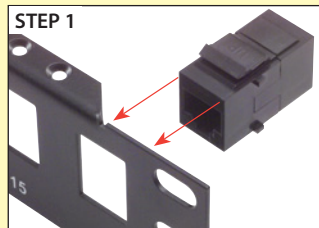
RoHS RJ45 (8x8) Keystone Feed-Thru Couplers - Shielded and Unshielded Category 3, 5E and 6						
These couplers utilize two RJ45 (8x8) modular jacks and fit into a standard keystone style opening. A slim housing design permits high density mounting. Couplers listed include Category 3, Category 5E and Category 6 performance ratings in both shielded and unshielded versions. Connector housings enclosed within a fully stamped shielding. Designed to work with EIA/TIA 568A and B wiring.						
TDG1026KC3	Category 3 Unshielded RJ45 (8x8) Keystone Feed-thru Coupler	3.99	3.59	3.19	2.79	2.39
TDG1026KS-8P	Category 3 Shielded RJ45 (8x8) Keystone Feed-thru Coupler	8.95	8.06	7.16	6.27	5.37
TDG1026KC5	Category 5E Unshielded RJ45 (8x8) Keystone Feed-thru Coupler	8.95	8.06	7.16	6.27	5.37
TDG1026KS-C5E	Category 5E Shielded RJ45 (8x8) Keystone Feed-thru Coupler	10.95	9.86	8.76	7.67	6.57
TDG1026KC6	Category 6 Unshielded RJ45 (8x8) Keystone Feed-thru Coupler	9.95	8.96	7.96	6.97	5.97
TDG1026KS-C6	Category 6 Shielded RJ45 (8x8) Keystone Feed-thru Coupler	12.95	11.66	10.36	9.07	7.77

Easily panel mount a keystone style connector

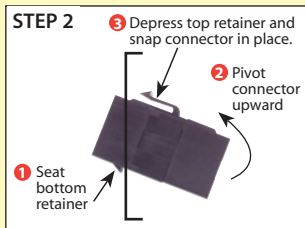


www.L-com.com/Videos/A10

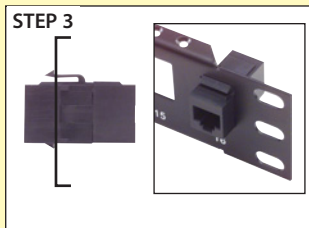
Keystone style refers to the snap-in mounting mechanism that many manufacturers have adopted.



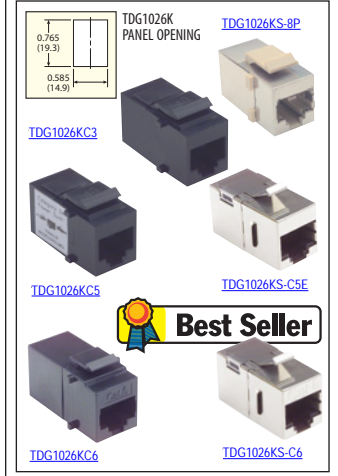
Align connector in proper orientation to the opening.



Seat bottom retainer and pivot connector upward while depressing upper retainer.



Connector fully seated.



We answer your technical questions
See a complete list of frequently asked questions at L-com.com/FAQS

Shop at **L-com.com** or call **1-800-343-1455**
E-mail: sales@L-com.com Fax: 978-689-9484

X-ON Electronics

Largest Supplier of Electrical and Electronic Components

Click to view similar products for [Modular Connectors](#) / [Ethernet Connectors](#) category:

Click to view products by [L-Com](#) manufacturer:

Other Similar products are found below :

[RJE231881317T](#) [MP1010RX-1000](#) [MP44RX-1000](#) [GAX-3-66](#) [GAX-8-62](#) [93606-0253](#) [GD-A-44](#) [GDCX-PA-66-50](#) [GDCX-PN-64](#) [GDCX-PN-66](#) [GDCX-PN-66-50](#) [GDLX-A-66](#) [GDLX-A-88](#) [GDLX-N-66](#) [GDLX-S-88K](#) [GDTX-S-88-50](#) [GDX-PA-1010](#) [GLX-N-1010M-BLK](#) [GLX-N-44M](#) [GLX-S-88M-BLK](#) [GMX-N-1010](#) [GMX-S-1010](#) [GMX-S-66](#) [GMX-SMT2-N-1010](#) [GMX-SMT2-N-64-50](#) [GMX-SMT2-S6-88](#) [GMX-SMT4-N-88](#) [GPX-2-64](#) [GRT1-BT1-5](#) [GSGX-N-2-88](#) [GSX-NS2-88-3.05](#) [GSX-NS2-88-3.05-50](#) [GSX-NS-88-3.05-30](#) [GSX-NS-88-3.05-50](#) [GSX-NS-88-3.68](#) [1-1775629-2](#) [GWLX-S-88-GR](#) [GWLX-S9-88-YG](#) [1300500326](#) [1300500227](#) [1300530003](#) [1300570002](#) [1324640-4](#) [RJ11FTVC2G](#) [RJ11FTVC2N](#) [RJFTVX2SA1G](#) [132764-001](#) [1400000](#) [1413176](#) [1413235](#)