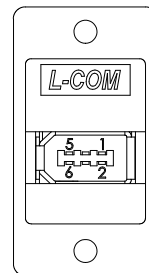
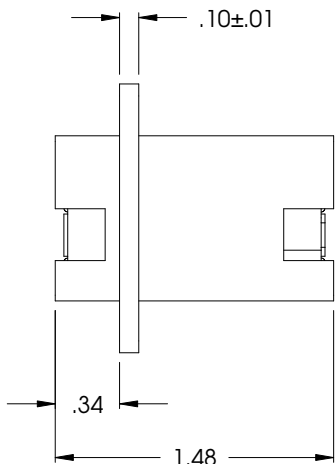
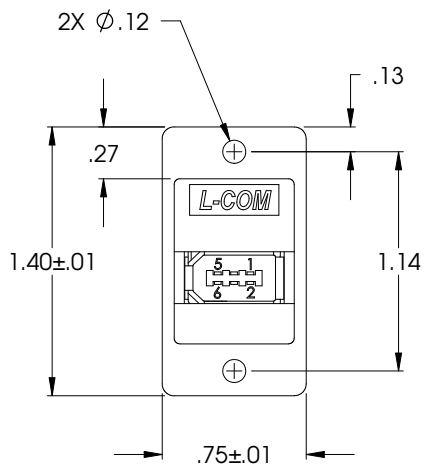


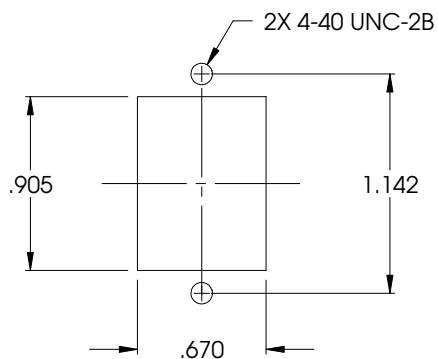
THE INFORMATION CONTAINED IN THIS DRAWING IS THE SOLE PROPERTY OF L-COM, INC. ANY REPRODUCTION IN PART OR WHOLE WITHOUT THE WRITTEN PERMISSION OF L-COM, INC. IS PROHIBITED.

REVISIONS			
REV	DESCRIPTION	DATE	APPROVED
A	INITIAL RELEASE	01/16/02	MCCORMICK
B	ECN# 1605 ADDED COMPONENT SPECIFICATIONS	12/09/03	MCCORMICK
C	ECN# 2082 CORRECTING DIM LENGTH	05/24/05	M.LAHEY

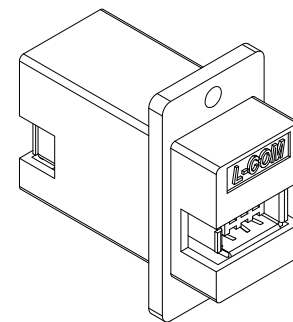


2X TYPE 1 JACK

TABLE	
J1	J2
PIN 1	PIN 1
PIN 2	PIN 2
PIN 3	PIN 5
PIN 4	PIN 6
PIN 5	PIN 3
PIN 6	PIN 4
SHELL	SHELL



RECOMMENDED PANEL CUT OUT



Component Specifications	
Material	
Housing	ABS 94V-0 Rating
Connector	Plastic; PBT with Glass Fiber
Contact	Brass
Shell	Brass
PCB	Epoxy Glass FP-4 94V-0 Rating
Finish	
Housing	Chrome
Contact	Gold 30 Micro Inch
Shell	Nickel
Electrical	
Current Rating	2 AMP Max
Voltage Rating	140 VDC
Environmental	
Operating Temperature	-20°C to +80°C

CS-132

UNLESS OTHERWISE SPECIFIED, DIMENSIONS ARE IN INCHES
TOLERANCES ARE:
X ±.1
XX ±.05
XXX ±.005
CABLE LENGTH TOLERANCE
≤300' ±5% >300' ±2%

APPROVALS	DATE
DRAWN BY C.MCCORMICK	01/13/2002
CHECKED BY D.PARHAM	01/13/2002
APPROVED BY R.CARRICK	01/13/2002

CONFIGURATION DETAILS OF UNDIMENSIONED FEATURES MAY VARY

L-com CONNECTIVITY PRODUCTS		45 BEECHWOOD DRIVE NORTH ANDOVER, MA 01845	
PRODUCT DESCRIPTION COUPLER PANEL MOUNTED FIREWIRE1/1 SHIELDED			
DRAWING TITLE OUTLINE DRAWING			
SIZE A	FSCM NO. 43321	DWG. NO. ECF504-94MS-OD1	REV. C
SCALE: NONE		CAD FILE: ECF504-94MS-OD1.SLDDRW	SHEET 1 OF 1

X-ON Electronics

Largest Supplier of Electrical and Electronic Components

Click to view similar products for [l-com manufacturer](#):

Other Similar products are found below :

[FOA-550A](#) [SDRA15AG](#) [UMC-201](#) [CSMN50MF-5](#) [CSMNB15MF-15](#) [TRD815RA2BL-5](#) [CA3N050](#) [CA3A-90DA-1M](#) [U3A00003-03M](#)
[CTLF3VGAMM-20](#) [HDCAMM-3](#) [U3A00014-03M](#) [ECF-SK-25](#) [CSMT15MF-10](#) [CSMT15MM-15](#) [CSMT15MM-25](#) [CSPL15MF-50](#)
[CSPL25MF-25](#) [CSPL9MF-10](#) [CSPL9MF-5](#) [CSPL25MF-5](#) [CSPL25MF-2.5](#) [AL-IPEPS](#) [NB201611-10F-1](#) [TDG1026KC5-MNL](#) [NB121005-](#)
[10F](#) [TRD855SRA6DBL-05M](#) [TRD855SRA6DBL-10M](#) [TRD855SRA7DBL-1M](#) [TRD855SRA7DBL-10M](#) [PR175SCDLCQ24](#) [TRG508-T4T-](#)
[3M](#) [TRA5261-15F](#) [TRA5261S-1F](#) [TRA6261-1F](#) [TRA6261-10F](#) [USBBFT](#) [DGB25M](#) [CASATAL-18](#) [CSM25MM-10](#) [CSM37MF-10](#)
[CSUSB-100](#) [CA3A-90RA-1M](#) [CA3A-90RMICB-1M](#) [U2A00003-3M](#) [U3A00003-05M](#) [U2A00008-12I](#) [U3A00056-03M](#) [U3A00007-075M](#)
[U3A00007-1M](#)