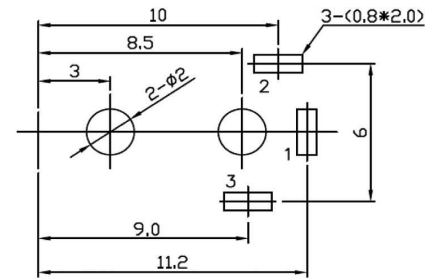
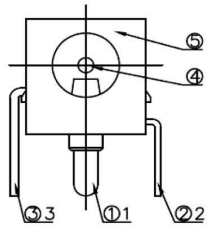
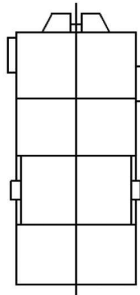
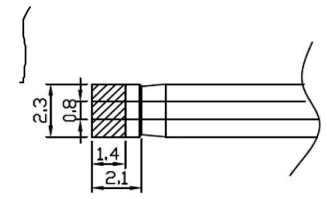
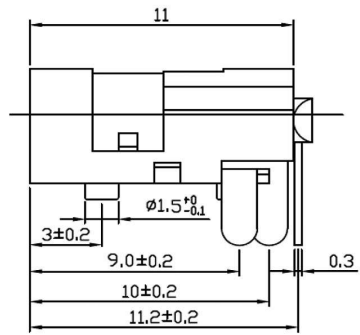
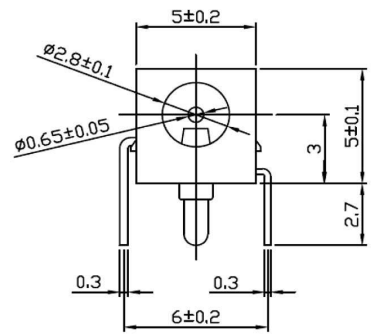


1 2 3 4 5 6 7 8

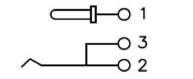
A
B
C
D
E
F
G
H



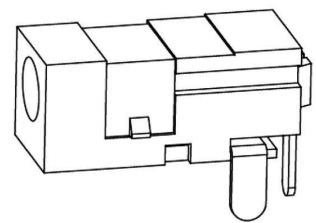
PCB LAYOUT TOP VIEW



PLUG SPEC



CIRCUIT DIAGRAM



④	HOUSING	1	PBT Black)	
③	TERMINAL	1	BRASS t=0.30	Ag-Plated
②	TERMINAL	1	PHOSPHOR BRONZE t=0.30	Ag-Plated
①	TERMINAL	1	H62 φ=0.65	Ag-Plated
No.	PART NAME	QTY	MATERIAL (THICK, COLOR)	REMARK

**RoHS
Compliant**

APPD. 核准
DWC. 製圖 Hedy
DATE 制表日 2019/02/20

SCALE 比例 參考
UNIT 單位 MM
PAGE 張數 1 / 1

TOLERANCE 容許公差
.0 ±
.00 ±
ANG. ±
SIZE. 紙張尺寸 A 4
REV. 版次 A
PART NAME 品名
DC POWER JACK RIGHT ANGLE TYPE
PINφ0.7mm NORMAL CLOSE TYPE
WITH LOCATING PEG WITHOUT SHIELDED
SILVER PLATING BLACK COLOR ROHS
PART NO. 料號 PC-GK0.65

UNSPECIFIED TOLERANCE	≤4	4-16	≥16	ANGULAR
	±0.15	±0.20	±0.30	±5°

1 2 3 4 5 6 7 8

X-ON Electronics

Largest Supplier of Electrical and Electronic Components

Click to view similar products for [DC Power Connectors](#) category:

Click to view products by [Ninigi](#) manufacturer:

Other Similar products are found below :

[1600206-1](#) [163-0301-EX](#) [163-0302](#) [163-0308-EX](#) [163-0310-EX](#) [163-1061-EX](#) [163-1100-EX](#) [163-4024](#) [163-4117-EX](#) [163-4118-EX](#) [163-5005-E](#) [163-7421](#) [163-MJ22-EX](#) [171-0721-EX](#) [171-0725-EX](#) [171-3118-EX](#) [171-3210-E](#) [171-3221-EX](#) [171-3222-EX](#) [171-A1326-EX](#) [173-23507-ST-EX](#) [173-5521TIP-EX](#) [173-6330TIP-EX](#) [KLDVX-SMT-02-ATR](#) [KLDX-0201-AHT-1](#) [KLDX-0202-AHT](#) [KLDX-SMT-0202-BP](#) [KLDX-SMT-0202-BPTR](#) [163-0179-EX](#) [163-0307-E](#) [163-0309-EX](#) [163-4007-EX](#) [163-4015-EX](#) [163-4025](#) [163-4119-E](#) [163-4303-E](#) [16PJ101-EX](#) [171-0702-EX](#) [171-0722-E](#) [171-0726-EX](#) [171-2122-EX](#) [171-3216-EX](#) [171-3218-EX](#) [171-3219-EX](#) [171-3220-EX](#) [171-7391](#) [173-3413-ST-EX](#) [173-4017-ST-EX](#) [RAPCBRK](#) [K596](#)