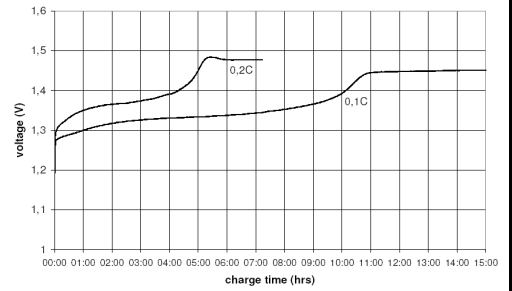


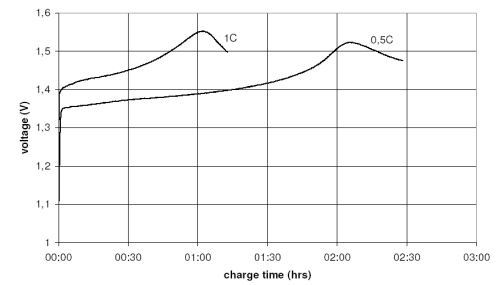
		Conditions	
<b>cell type:</b>		NiMH	
<b>cell size:</b>		C	
<b>nominal voltage:</b>	1.2	V	
<b>max. charge voltage:</b>	1.5	V at standard charge (0.1C / 20°C)	
<b>capacity</b>			
nominal:	4500	mAh	discharge at 0.2C
minimum:	4500	mAh	discharge at 0.2C
	4200	mAh	discharge at 1C
			1.0V end discharge voltage
			ta: 20°C
<b>max. continuous discharge current:</b>	6750	mA	ta: 0...45°C
<b>charge</b>			
standard charge:	450	mA	14....16hrs
quick charge:	1350	mA	4hrs
fast charge:	2250	mA	2.3hrs
recommended charge termination control parameters:	0...5	mV	- ΔV (-deltaV)
	0.8...1	°C	temperature rise per minute
	45...50	°C	TCO (temperature cut off)
trickle charge current:	45...150	mA	(recommended)
continuous overcharge: (less than 1 year)	≤ 450	mA	no conspicuous deformation no leakage
<b>internal resistance:</b> (impedance)	≤ 20	mΩ	at 1KHz battery fully charged
<b>life expectancy:</b>	≥ 500	cycles	acc. IEC standard
<b>self discharge</b>			
charge retention:	≥ 80	%	after 12 months storage at 20°C
<b>initial capacity:</b>	≥ 3150	mAh	within 30 days after delivery discharge at 0.2C
<b>ambient temperature range:</b>	0...45	°C	standard charge
	10...40	°C	fast charge
	0...45	°C	discharge (≥1C)
	- 20...65	°C	discharge (<1C)
	- 20...50	°C	storage (≤3months)
	- 20...40	°C	storage (≤6months)
	- 20...30	°C	storage (≤24months)
QCT1:	20/4300/20		
QCT2:	30/4200/20		

### Diagrams

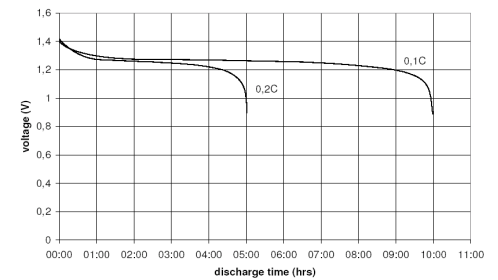
standard charge



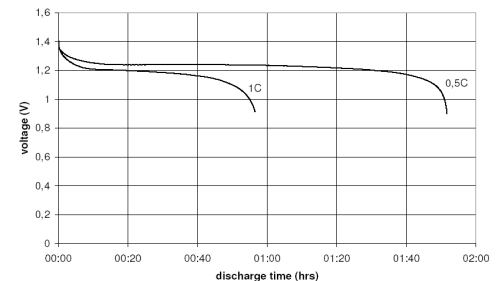
fast charge



low rate discharge



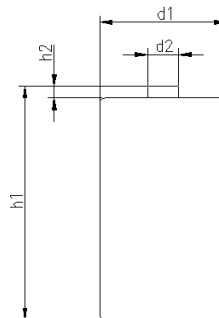
high rate discharge



### mechanical specifications

cell dimensions

diameter d1:		25.6 - 1.0	mm
diameter d2:	max.	7.5	mm
height h1:		50.0 - 2.0	mm
height h2:	min.	1.5	mm
weight:		80 ± 4	g
blister card dimensions:		123 x 85	mm
blister card weight (incl. batteries):		168	g



27

	<b>ANSMANN Specifications for model:</b>	<b>C - 4500mAh low self discharge 2pcs blister package</b>
	data sheet no. / part no.	5035352
	supplier no.	701364
	author / date	Gramlich / 24.02.2012

Manufacturer reserves the right to alter or amend the design, model and specification without prior notice

## **X-ON Electronics**

Largest Supplier of Electrical and Electronic Components

*Click to view similar products for [ansmann](#) manufacturer:*

Other Similar products are found below :

[5020012](#) [1000-0003](#) [5013233](#) [5030992](#) [1520-0004](#) [1501-0004-1](#) [1001-0020-UK](#) [2312-3003](#) [1250-0013](#) [1600-0199](#) [5030902](#) [1900-0019](#)  
[1001-0014-UK](#) [5035362](#) [5013243](#) [5707173](#) [1600-0137](#) [5035391](#) [5000023](#) [5311113 / APS 1000](#) [1600-0138](#) [1250-0014](#) [BCA120-350](#) [1600-](#)  
[0145](#) [5015293](#) [5030982](#) [2311-3003](#) [5030802](#) [10950964/01](#) [5030912](#) [5016243](#) [5035222](#) [2310-3001](#) [5030641](#) [5001183](#) [1600-0154](#) [5035352](#)  
[5035342](#) [ACS310](#) [5035202](#) [5015332](#) [5035201](#) [5015303](#) [2311-3002](#)