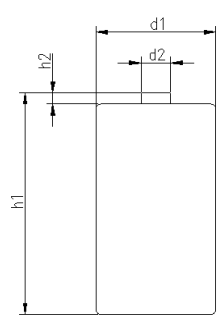
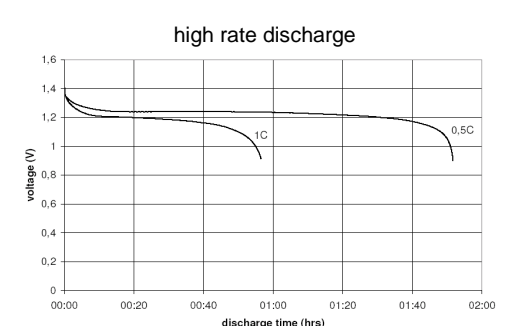
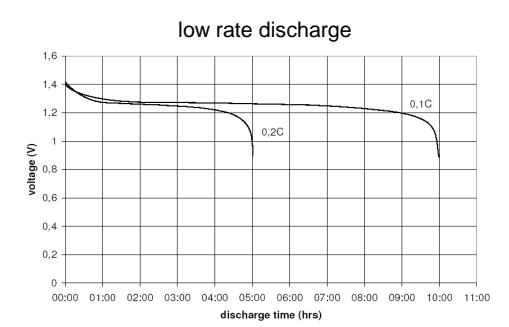
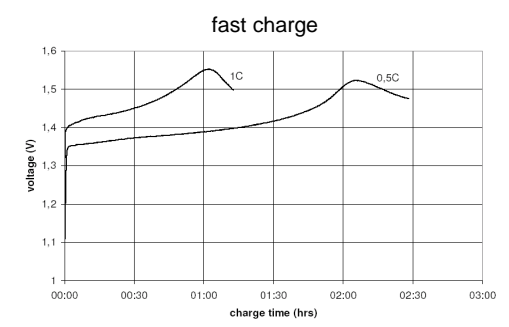
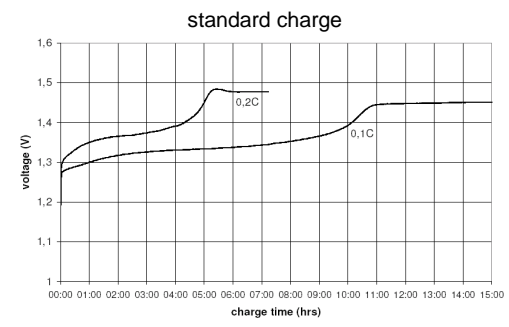


		Conditions	
cell type:		NiMH	
cell size:		C	
nominal voltage:	1.2	V	
max. charge voltage:	1.5	V	
		at standard charge (0.1C / 20°C)	
capacity			
nominal:	2500	mAh	
minimum:	2500	mAh	
	2250	mAh	
		discharge at 0.2C	
		discharge at 0.2C	
		discharge at 1C	
		1.0V end discharge voltage	
		ta: 20°C	
max. continuous discharge current:	5000	mA	
		ta: 0...45°C	
charge		current	time
standard charge:	250	mA 14....16hrs	
quick charge:	750	mA 4hrs	
fast charge:	2500	mA 1.1hrs	
recommended charge termination control parameters:	0...5	mV - ΔV (-deltaV)	
	0.8...1	°C temperature rise per minute	
	45...50	°C TCO (temperature cut off)	
trickle charge current:	25...75	mA (recommended)	
continuous overcharge: (less than 1 year)	≤ 250	mA no conspicuous deformation no leakage	
internal resistance: (impedance)	≤ 30	mΩ at 1KHz battery fully charged	
life expectancy:	≥ 500	cycles acc. IEC standard	
self discharge			
charge retention:	≥ 80	% after 12 months storage at 20°C	
initial capacity:	≥ 1700	mAh within 30 days after delivery discharge at 0.2C	
ambient temperature range:	0...45	°C standard charge	
	10...40	°C fast charge	
	0...45	°C discharge (≥1C)	
	- 20...65	°C discharge (<1C)	
	- 20...50	°C storage (≤3months)	
	- 20...40	°C storage (≤6months)	
	- 20...30	°C storage (≤24months)	
QCT1:	20/2350/30		
QCT2:	30/2200/35		

mechanical specifications			
cell dimensions			
diameter d1:		25.6 - 1.0	mm
diameter d2:	max.	7.5	mm
height h1:		50.0 - 2.0	mm
height h2:	min.	1.5	mm
weight:		60 ± 4	g
blister card dimensions:		123 x 85	mm
blister card weight (incl. batteries):		128	g



Diagrams



	ANSMANN Specifications for model:	C - 2500mAh low self discharge 2pcs blister package
	data sheet no. / part no.	5030912
	supplier no.	702069
	author / date	Gramlich / 28.02.2012

Manufacturer reserves the right to alter or amend the design, model and specification without prior notice

X-ON Electronics

Largest Supplier of Electrical and Electronic Components

Click to view similar products for [ansmann](#) manufacturer:

Other Similar products are found below :

[5020012](#) [1000-0003](#) [5013233](#) [5030992](#) [1520-0004](#) [1501-0004-1](#) [1001-0020-UK](#) [2312-3003](#) [1250-0013](#) [1600-0199](#) [5030902](#) [1900-0019](#)
[1001-0014-UK](#) [5035362](#) [5013243](#) [5707173](#) [1600-0137](#) [5035391](#) [5000023](#) [5311113 / APS 1000](#) [1600-0138](#) [1250-0014](#) [BCA120-350](#) [1600-0145](#) [5015293](#) [5030982](#) [2311-3003](#) [5030802](#) [10950964/01](#) [5030912](#) [5016243](#) [5035222](#) [2310-3001](#) [5030641](#) [5001183](#) [1600-0154](#) [5035352](#)
[5035342](#) [ACS310](#) [5035202](#) [5015332](#) [5035201](#) [5015303](#) [2311-3002](#)