

Applications

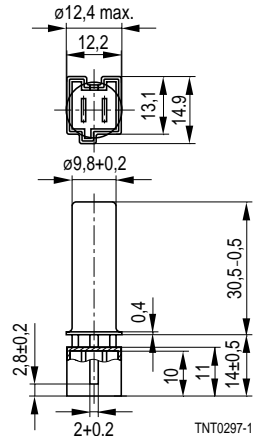
- Washing machines
- Dish washers
- Tumble-dryers
- Water boilers

Features

- Suitable for use in corrosive environments
- Compact stainless steel case
- FASTON 5 plug terminals
(DIN 46 244/4,8 × 0,8)
 $R_{is} > 1000 \text{ M}\Omega$ ($V = 100 \text{ V dc}$)
 $V_{is} = 3750 \text{ V dc}$ ($t = 1 \text{ s}$)
- Cost-effective ready-to-use sensor

Options

Alternative resistance ratings, rated temperatures and resistance tolerances available on request



Dimensions in mm
Approx. weight 10 g

Climatic category (IEC 68-1)		10/100/56	
Max. power at 25 °C	P_{25}	500	mW
Resistance tolerance	$\Delta R/R_N$	± 2 %	
Rated temperature	T_N	80	°C
B value tolerance	$\Delta B/B$	± 1,5 %	
Dissipation factor (in water)	δ_{th}	approx. 20	mW/K
Thermal time constant	τ_a	approx. 15	s
Heat capacity	C_{th}	approx. 100	mJ/K

Type	R_{80} Ω	R_{25} Ω	No. of R/T characteristic	$B_{25/100}$ K	Ordering code
K 276/12 k/A27	1704	11982	2901	3760	B57276-K123-A27

Reliability data

Test	Standard	Test conditions	$\Delta R_{25}/R_{25}$ (typical)	Remarks
Storage in dry heat	IEC 60068-2-2	Storage at upper category temperature T: 100 °C t: 1000 h	< 2 %	No visible damage
Storage in damp heat, steady state	IEC 60068-2-3	Temperature of air: 40 °C Relative humidity of air: 93 % Duration: 56 days	< 1 %	No visible damage
Rapid temperature cycling	IEC 60068-2-14	Lower test temperature: – 10 °C Upper test temperature: 100 °C Number of cycles: 10	< 1 %	No visible damage
Endurance		P_{\max} : 500 mW Duration: 1000 h	< 2 %	No visible damage
Long-term stability (empirical value)		Temperature: 100 °C Duration: 10 000 h	< 3 %	No visible damage
Robustness of terminations	DIN 46 249	Pull-out force (both connectors together) $F = 50 \text{ N}$	—	No visible damage

X-ON Electronics

Largest Supplier of Electrical and Electronic Components

Click to view similar products for [epcos manufacturer](#):

Other Similar products are found below :

[B82432X001](#) [B82731H2501A30](#) [B25673A4302A080](#) [B32529C0104K000](#) [B43501B3337M7](#) [B44066R6012E230](#) [B57235S0100M](#)
[B57236S0200M](#) [B57236S0259M](#) [B57237S0100M](#) [B57237S0109M](#) [B57237S0229M](#) [B57237S0259M](#) [B57237S0330M](#) [B72520T0250K062](#)
[B82422A1102K100](#) [B82422A1333K100](#) [B82422A1472K100](#) [B82721A2202N001](#) [B84142A50R](#) [B84143B600S20](#) [B84144A0120R000](#)
[B84144A90R120](#) [B84243A8008W](#) [B88069X0270S102](#) [BR6000-R6](#) [B25631A1506K200](#) [B32656S0105K561](#) [B32656T684K](#)
[B32686A7104K](#) [B32913A5154M](#) [B41550E7229Q000](#) [B43252A5476M](#) [B57236S0509M](#) [B57237S0150M](#) [B57237S0479M](#) [B57237S0509M](#)
[B59955C0120A070](#) [B59995C0120A070](#) [B64290A0045X038](#) [B72240B321K1](#) [B72530T0400K062](#) [B72530T250K62](#) [B82422A1473K100](#)
[B84144A50R](#) [B32332I6755J080](#) [B32521C1105J](#) [B32673P6474K000](#) [B43504B2108M000](#) [B43508A9827M](#)