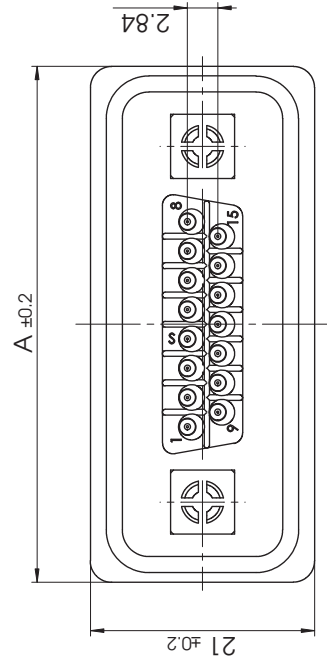
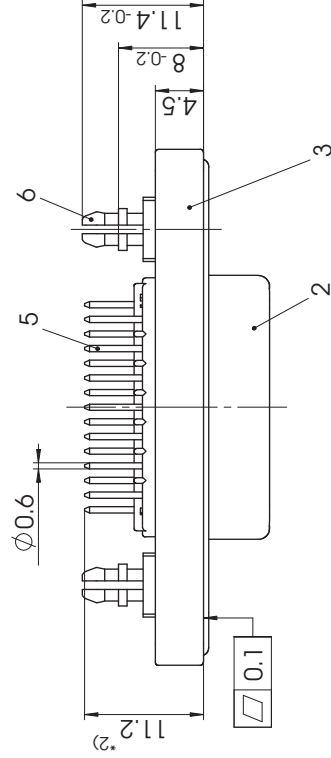
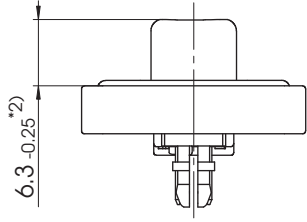
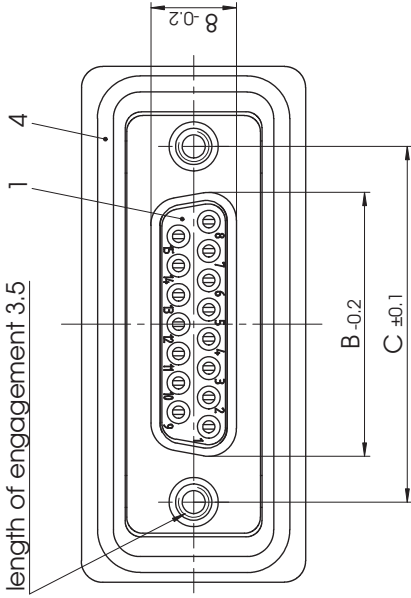


4-40UNC-2B
length of engagement 3.5



FWDRXX *1) S1A

e.g. FWDR15S1A

*1) xx No. of contacts 09, 15 or 25

xx	A mm	B mm	C mm	*øE mm	*øF mm
09	40	16.4	25		
15	48.3	24.7	33.3	ø1	ø3
25	62	38.5	47.04		

*PCB hole patterns, øE and øF on supplement AM0023

*2) Dimension starts from front surface of shell (Part-No. 2)

max. torque are 40 Ncm
D-Sub connector with watertight frame,
Protection standard IP67, 100% checked
according to DIN EN 60529 (compl. mounted)

No.	St.	Part	Type Description / Material	SCALE	TITLE
6	2	Snap-in bolt	PCB 1.6mm 4-40 / Brass	2.1	Waterproof Connector System
5	xx	Signal contact	SI / Brass		
4	1	O-ring seal	Silicone / UL94V-0		
3	1	Watertight frame	PBT		
2	1	Shell	Brass		
1	1	Insulator	PBT (-25°C - +70°C)		
<small>Measurement without tolerance acc. to ISO 2768-m</small>					
<small>NAME / DATE</small>					
<small>toland schneider</small>					
<small>10.07.2013</small>					
<small>CHECKED</small>					
<small>Anke Meyer-Richter</small>					
<small>11.07.2013</small>					

REV.	DATE	CH.-NO.	DWG.NO.	REPLACEMENT FOR:	PAGES
1			FWDRxxS1A		1

X-ON Electronics

Largest Supplier of Electrical and Electronic Components

Click to view similar products for [fct electronics manufacturer](#):

Other Similar products are found below :

[F2W2SC-1002](#) [FMK3-K201](#) [FT2W2SC-K121](#) [K761](#) [24P104C24P1-006](#) [SDB15P159S-060](#) [SHD15P15S-012](#) [SHD15P15S-036](#) [FU27W2S7-K121](#) [2761](#) [ICD040GVP163D-03](#) [ICD040GVP163D-25](#) [10056427-1050011LF](#) [155298-002](#) [155286-001](#) [172704-0016](#) [173112-0413](#) [173113-0152](#) [173109-0036](#) [111-0098-994](#) [173107-0568](#) [FM24W7P-K120](#) [FM9W4P-K120](#) [FWDR15S](#) [RB09P09P-006](#) [FLW0915S7](#) [FT2W2PC-K120](#) [25P203C25P2-003](#) [K1003](#) [10112041-2020HLF](#) [173112-0077](#) [173112-0074](#) [173114-0092](#) [10046971-019LF](#) [10093084-2010LF](#) [FWDR09S1](#) [SHD26P26S-012](#) [FWDR15P](#) [74977-101001LF](#) [FM25W3PA-K120](#) [173112-0073](#) [151-2811-010](#) [91910-21169LF](#) [SHD15P15S-060](#) [FKC3GNME](#) [FKT5](#) [CT50-78P7](#) [HM2R89PA8100N9LF](#) [FM27W2SA-K121](#) [73231-1321](#)