

battery type: Alkaline (Mercury free)
battery size: IEC: LR01; JIS: AM-5; ANSI: N; Lady
chemical system: Zn / KOH-H₂O / MnO₂

nominal voltage: 1,5V
off load voltage: 1,57...1,62V (new battery)
 1,55...1,62V (after 1 year storage at 20 °C)

capacity:
rated: 940mAh (at 300ohms load; discharge 12h/day; 20 °C; End Voltage 0,9V)
min: 750mAh (at 5mA constant current discharge (EV: 0,8V))
 550mAh (at 60mA constant current discharge (EV: 0,8V))

service output:
new battery: norm. 12,5h (at 20ohms load; discharge 24h/d; 20 °C; End Voltage 0,9V)
 min. 10,5h
after 1 year storage: norm. 10,0h
 min. 8,5h

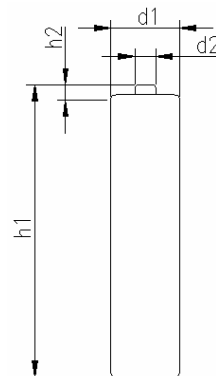
new battery: norm. 140min (at 5,1ohms load; discharge 5min/d; 20 °C; End Voltage 0,9V)
 min. 110min
after 1 year storage: norm. 110min
 min. 80min

new battery: norm. 215min (at 300ohms load; discharge 12h/d; 20 °C; End Voltage 0,9V)
 min. 208min
after 1 year storage: norm. 200min
 min. 185min


note: storage conditions: 20±5°C, RH: 45-75%

shelf life: up to 5 years (under proper storage conditions)

leakage resistance:
over discharge: no leakage (20ohms continuous discharge for 48h; 20 °C; RH 60 ±15%)
high temperature: no leakage (store 20days under 60 °C; RH 90 ±5%)



mechanical specifications
 cell dimensions (with sleeve)
 diameter d1: 12,0mm - 1,1mm
 diameter d2: 3,7mm - 0,4mm
 height h1: 30,2mm - 1,1mm
 height h2: 1,3mm - 0,4mm
 weight: approx. 9g

	specifications for model/type:	Alkaline size N (LR01)
		1 pcs blister
	Ansmann drawing number / part number:	5015453
	author / date:	Gramlich / 09.07.2007

X-ON Electronics

Largest Supplier of Electrical and Electronic Components

Click to view similar products for [ansmann](#) manufacturer:

Other Similar products are found below :

[5020012](#) [1000-0003](#) [5013233](#) [5030992](#) [1520-0004](#) [1501-0004-1](#) [1001-0020-UK](#) [2312-3003](#) [1250-0013](#) [1600-0199](#) [5030902](#) [1900-0019](#)
[1001-0014-UK](#) [5035362](#) [5013243](#) [5707173](#) [1600-0137](#) [5035391](#) [5000023](#) [5311113 / APS 1000](#) [1600-0138](#) [1250-0014](#) [BCA120-350](#) [1600-](#)
[0145](#) [5015293](#) [5030982](#) [2311-3003](#) [5030802](#) [10950964/01](#) [5030912](#) [5016243](#) [5035222](#) [2310-3001](#) [5030641](#) [5001183](#) [1600-0154](#) [5035352](#)
[5035342](#) [ACS310](#) [5035202](#) [5015332](#) [5035201](#) [5015303](#) [2311-3002](#)