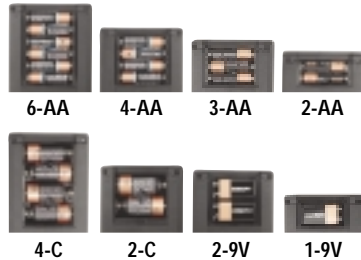


## 100 Series LCD Case-Flat Bottom

A very versatile LCD enclosure with LCD display window. Recessed area for membrane keypad. Battery options include: 2AA, 3AA, 4AA, 6AA, 1 or 2-9V, 2C, 4C and No battery.

### Battery Options:

No Battery	6 AA cells
2 AA cells	1 or 2-9V cells
3 AA Cells	2 C sized cells
4 AA cells	4 C sized cells



### Color Options :

PC Bone  
 Black  
 Custom color matching

### Standard Material Options:

ABS UL 94 VO (fire retardant)  
 ABS UL 94 HB standard

### Dimension Options:

(L x W x H)  
 7.50" x 4.0" x 1.12 / 2.10"\*  
 7.50" x 4.0" x 1.29 / 2.26"  
 7.50" x 4.0" x 1.75 / 2.70"\*  
 7.50" x 4.0" x 1.90 / 2.85"\*

\*Please call for part number

All LCD enclosures supplied with recessed top for membrane keypad or overlay.

LCD Window size	2x16	2x16	4x16	4x20
	2.36 x 0.60"	2.4 x 0.50"	2.40 x 0.95"	2.80 x 1.00"
Case Dimensions	7.5x4.0x1.29"	7.5x4.0x1.29"	7.5x4.0x1.29"	7.5x4.0x1.29"
Description	Part No.	Part No.	Part No.	Part No.
LCD case with NO Battery Compartment	101-42-NO	102-42-NO	103-42-NO	104-42-NO
LCD case with 2AA Battery Compartment	101-42-2A	102-42-2A	103-42-2A	104-42-2A
LCD case with 3AA Battery Compartment	101-42-3A	102-42-3A	103-42-3A	104-42-3A
LCD case with 4AA Battery Compartment	101-42-4A	102-42-4A	103-42-4A	104-42-4A
LCD case with 6AA Battery Compartment	101-42-6A	102-42-6A	103-42-6A	104-42-6A
LCD case with 9V Battery Compartment	101-42-9V	102-42-9V	103-42-9V	104-42-9V
LCD case with 2-9V Battery Compartment	101-42-29V	102-42-29V	103-42-29V	104-42-29V

Note: for black add BL to part number, for bone add BO to part number

### ACCESSORIES

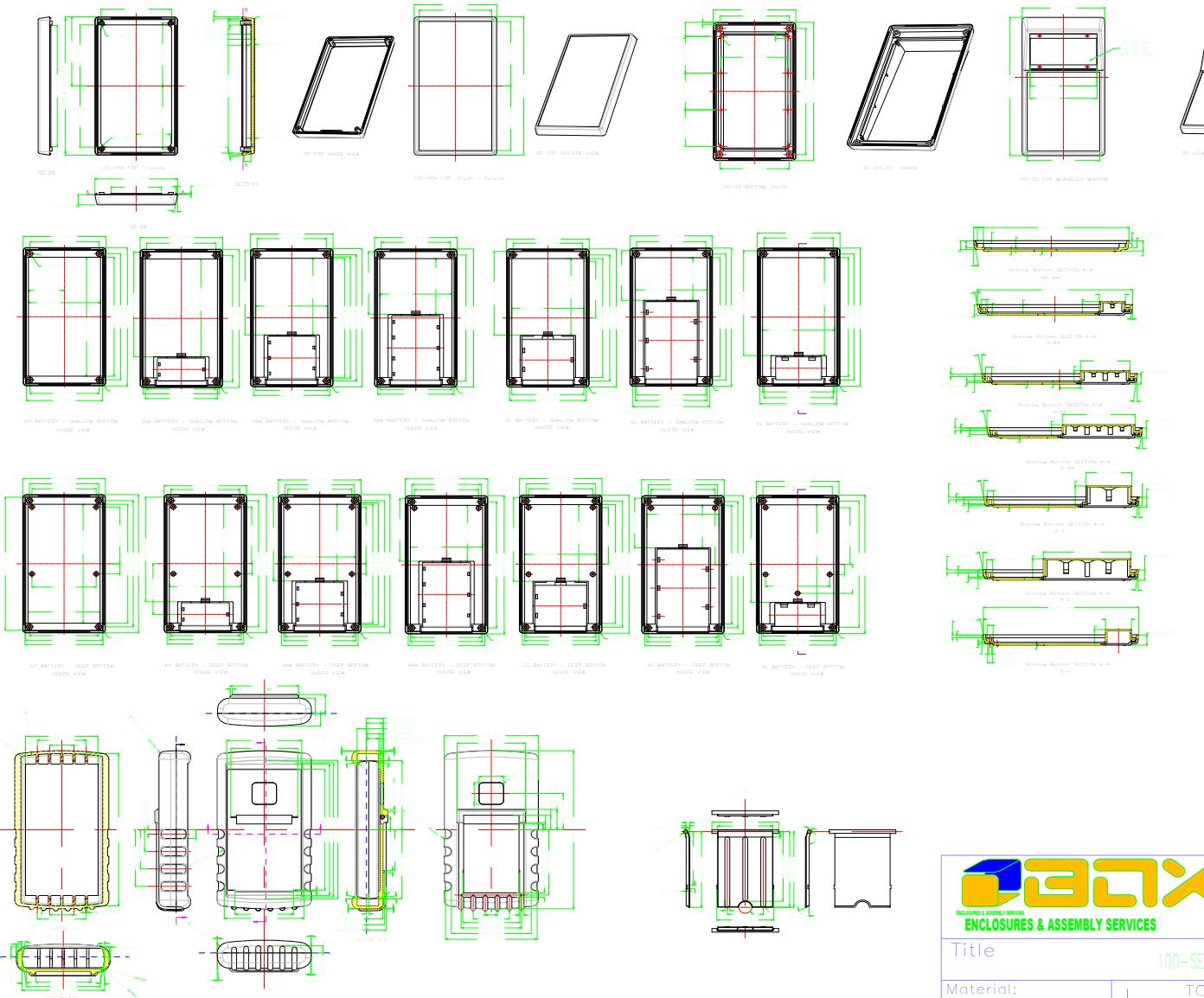

Protective Boot w/Integrated tilt bar	Light Blue	Dark Blue	Bright Orange	Bright Yellow	Red	Black
	Part No.	Part No.	Part No.	Part No.	Part No.	Part No.
	100-RBT-LBL	100-RBT-DBL	100-RBT-ORG	100-RBT-YEL	100-RBT-RED	100-RBT-BLK

Battery Clip Sets	2AA set	3AA set	4AA set	6AA set	9V snap on	2C set	4C set
	Part No.	Part No.	Part No.	Part No.	Part No.	Part No.	Part No.
	BAT-2A	BAT-3A	BAT-4A	BAT-6A	BAT-9VS	BAT-2C	BAT-4C

Belt Clips	Bone	Black
	Part No.	Part No.
	CLP-BONE	CLP-BLK

Expander Panel	Black Panel	Bone Panel
	Part No.	Part No.
(increases case height by 0.5 inches)	100-EXPBLK	100-EXPBONE

Required for C size battery options

**ENCLOSURES & ASSEMBLY SERVICES**

Title: 100-SEP

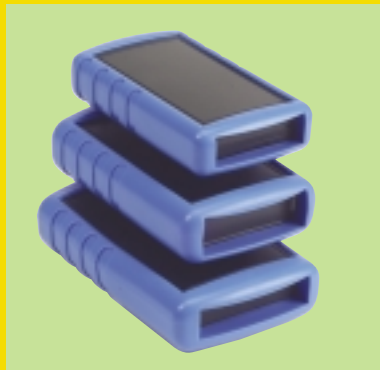
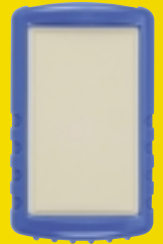
Material: TO

Finish: all dir unless o

Proj. x .x .xx AN

## New for 2004

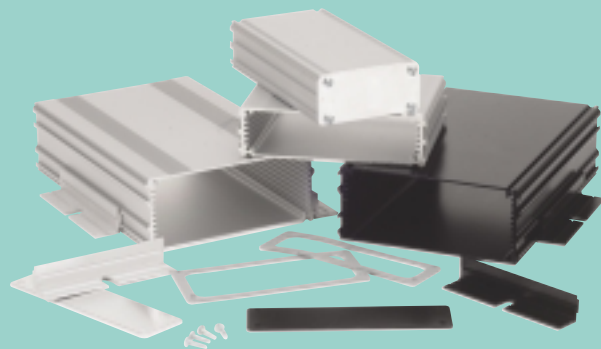
Featuring eight new product lines with protective rubber boots.



NEMA 4 / IP65 Enclosures



Extruded Aluminum



Protective Boots

NEW!



LCD Enclosures

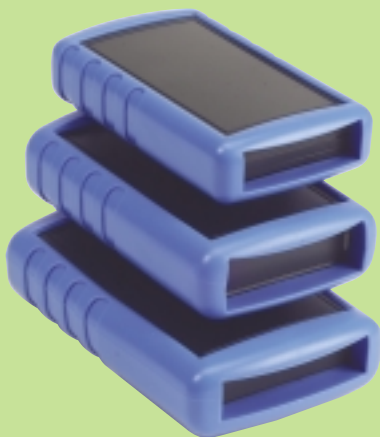


ENCLOSURES & ASSEMBLY SERVICES

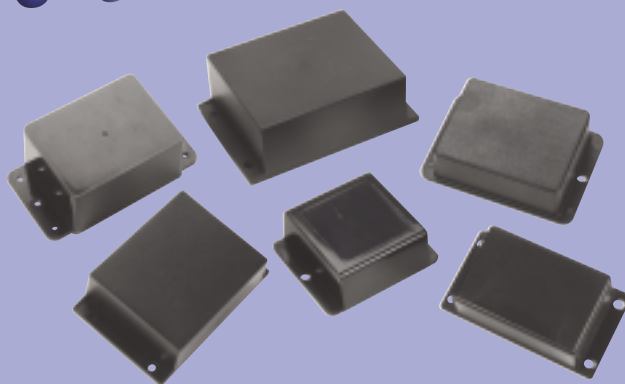
Enclosing electronics one box at a time.



Handheld Enclosures



Flange Cases



See back page for International Distribution Network

## X-ON Electronics

Largest Supplier of Electrical and Electronic Components

*Click to view similar products for [box enclosures manufacturer](#):*

Other Similar products are found below :

[101-42-NO-R-BO](#) [B2-080SI](#) [B1-120BL](#) [B2-160SI](#) [40-12-NO-F-BL](#) [40-12-9V-R-BO](#) [55-RBT-BL](#) [B4-220BK](#) [SK1](#) [40-12-9V-F-BO](#) [90-RBT-BL](#) [101-42-4A-R-BL](#) [SK4](#) [SBH-9V-BK](#) [100-42-NO-F-BL](#) [40-RBT-YEL](#) [50-RBT-BLK](#) [21G-BK](#) [55-12-9V-R-BL](#) [SBH-4AA-BK](#) [55-12-2A-R-BL](#) [ASK71](#) [B3-080RD](#) [EC2-BK](#) [WTS127S](#) [ASK70](#) [100-42-9V-F-BL](#) [55-RBD-DBL](#) [ASK74](#) [MBS107](#) [B4-080BK](#) [101-42-9V-R-BL](#) [ASK72](#) [B3-220BK](#) [B1-080SI](#) [B3-080BL](#) [B4-160BL](#) [B2-080BL](#) [40-RBT-BL](#) [40-RBT-BLK](#) [101-42-4A-R-BO](#) [B2-160BK](#) [90-RBT-DBL](#) [MBM107](#) [PBS107](#) [SBH-29V-BK](#) [PBS109](#) [MBM109](#) [PBM107](#) [PBL109](#)