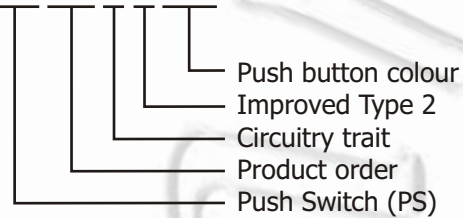


Specification:

- 1) Rating (if not described next to the switch):
3 A 125 VAC; 1 A 250 VAC
- 2) Contact Resistance: 20 mW max.
- 3) Insulation Resistance: 500 VDC 100 MW min.
- 4) Dielectric strength: 1000 VAC, 1 minute
- 5) Electrical Life: 50000 cycles

PS10B2BK



CIRCUITRY TRAIT

A	ON - OFF	Push on/Push off	With lock
B	OFF - (ON)	Push on	Momentary
C	ON - (OFF)	Push off	Momentary

() indicates momentary

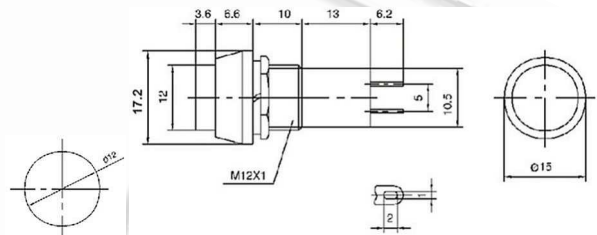
PUSH BUTTON COLOUR

RD	red
GN	green
OR	orange
BU	blue
WH	white
BK	black
YL	yellow

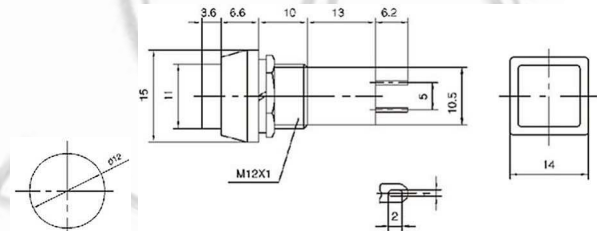
Ninigi



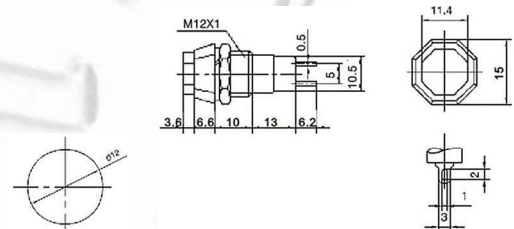
PS11A ON-OFF
PS11B OFF-(ON)
PS11C ON-(OFF)



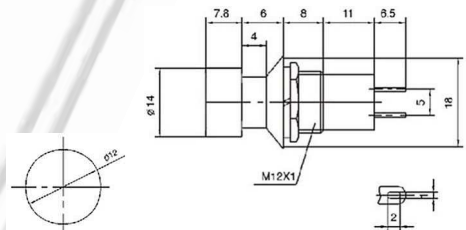
PS12A ON-OFF
PS12B OFF-(ON)
PS12C ON-(OFF)



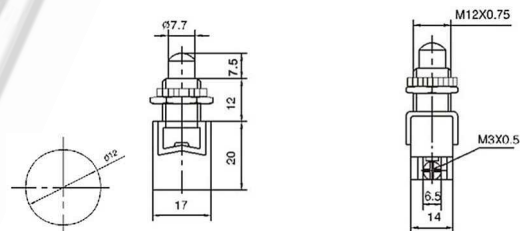
PS14A ON-OFF
PS14B OFF-(ON)
PS14C ON-(OFF)



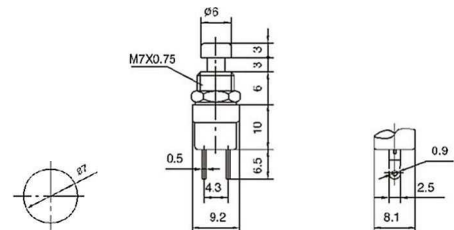
PS16A ON-OFF
PS16B OFF-(ON)
PS16C ON-(OFF)



PS13B OFF-(ON)
PS13C ON-(OFF)
 8 A 125 VAC; 4 A 250 VAC



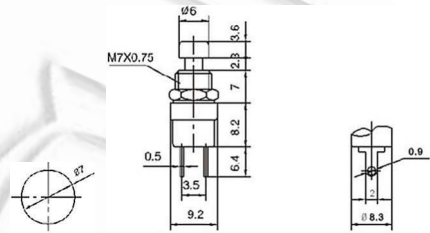
PS10B OFF-(ON)
 (plastic rod)



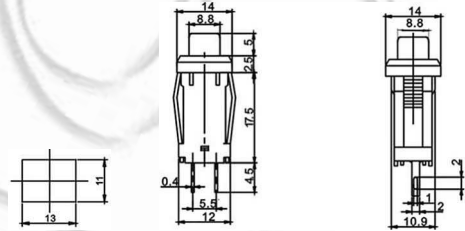
Ninigi



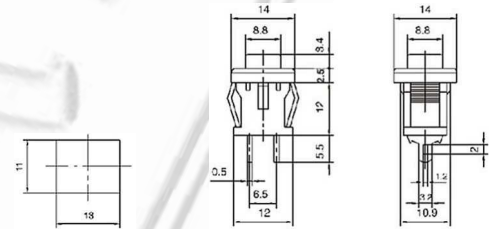
PS10B2 OFF-(ON)
PS10C2 ON-(OFF)
 (metal rod)



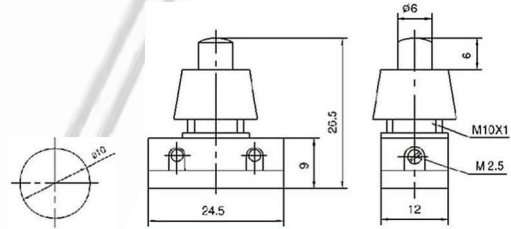
PS15A ON-OFF



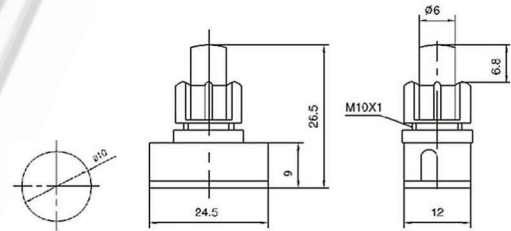
PS15B OFF-(ON)
PS15C ON-(OFF)



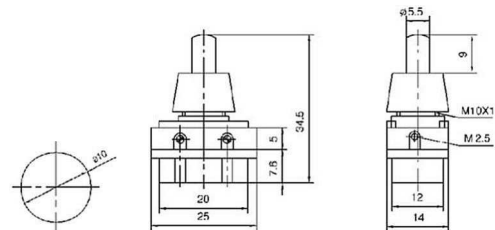
PS17A ON-OFF
 4 A 125 VAC; 2 A 250 VAC



PS17A2 ON-OFF
 (PS17B)



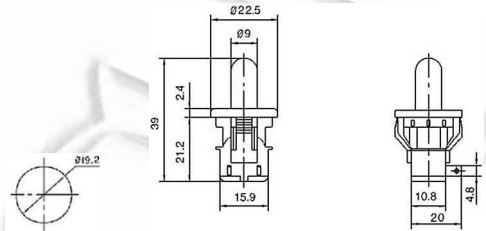
PS17A3 ON-OFF
 (PBS-17B)
 4 A 125 VAC; 2 A 250 VAC



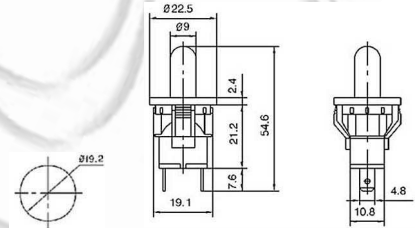
Ninigi



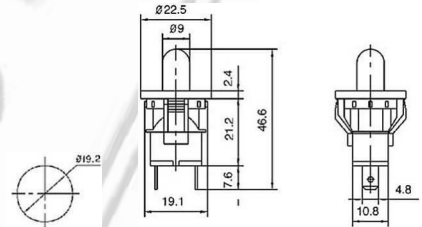
PS19B OFF-(ON)
PS19C ON-(OFF)
 5 A 125 VAC; 2.5 A 250 VAC



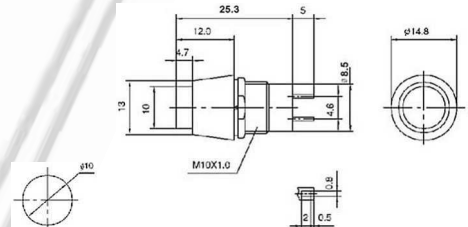
PS19B2 OFF-(ON)
PS19C2 ON-(OFF)
 5 A 125 VAC; 2.5 A 250 VAC



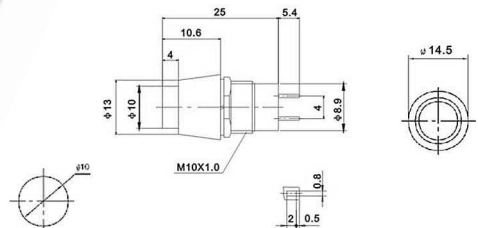
PS19B3 OFF-(ON)
PS19C3 ON-(OFF)
 5 A 125 VAC; 2.5 A 250 VAC



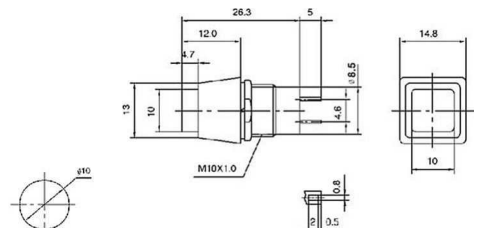
PS20A ON-OFF
PS20B OFF-(ON)



PS20A2 ON-OFF
PS20B2 OFF-(ON)



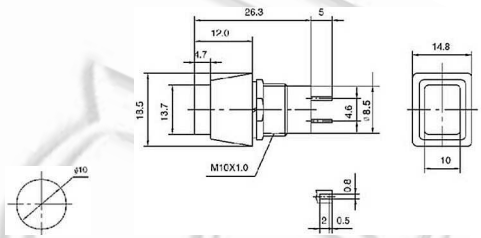
PS21A ON-OFF
PS21B OFF-(ON)



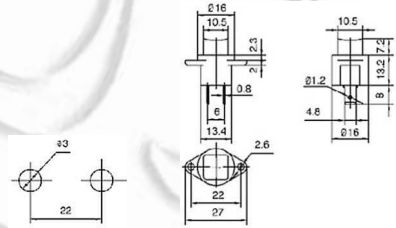
Ninigi



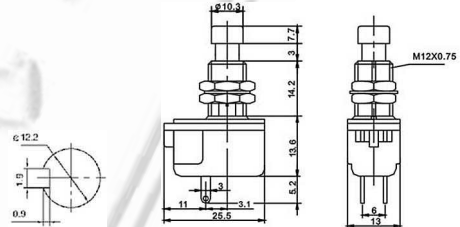
PS22A ON-OFF
PS22B OFF-(ON)



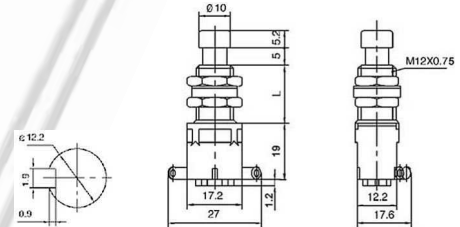
PS23B OFF-(ON)



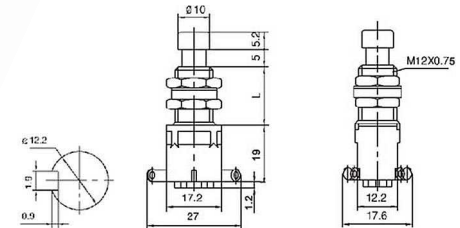
PS24B2 OFF-(ON)
PS24C2 ON-(OFF)
10 A 125 VAC; 2.5 A 250 VAC
SPST 2P



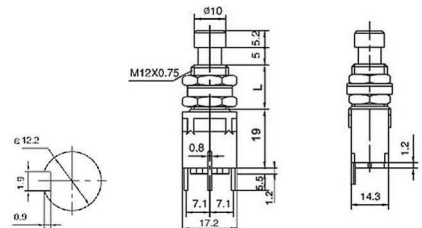
PS24102 ON-ON
PS24112 ON-(ON)
4 A 125 VAC; 2 A 250 VAC
SPDT 3P
(L=14.2, 11.8, 9.8)



PS24202 ON-ON
PS24212 ON-(ON)
4 A 125 VAC; 2 A 250 VAC
DPDT 6P
(L=14.2, 11.8, 9.8)



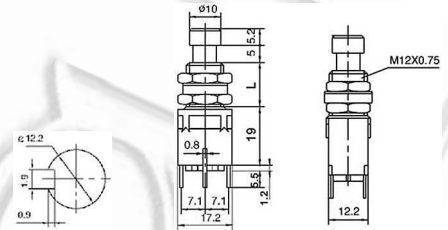
PS24102P ON-ON
PS24112P ON-(ON)
4 A 125 VAC; 2 A 250 VAC
SPDT 3P
(L=14.2, 11.8, 9.8)



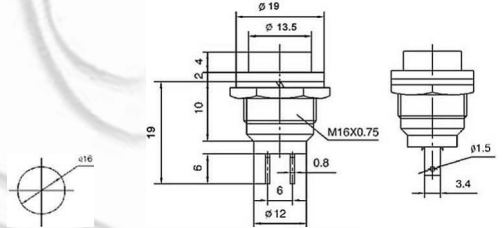
Ninigi



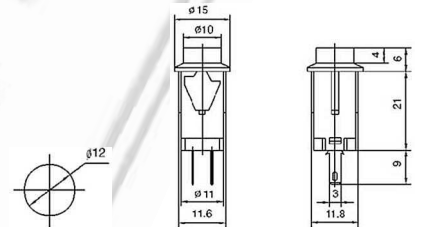
PS24202P ON-ON
PS24212P ON-(ON)
 4 A 125 VAC; 2 A 250 VAC
 DPDT 6P
 (L=14.2, 11.8, 9.8)



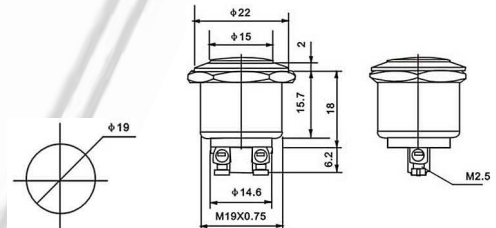
PS26B OFF-(ON)
PS26C ON-(OFF)
 4 A 125 VAC; 2 A 250 VAC



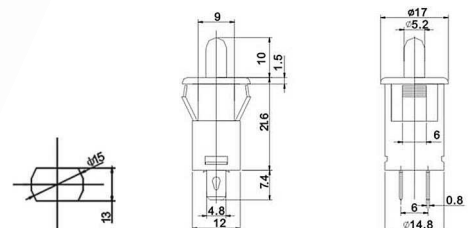
PS27B OFF-(ON)



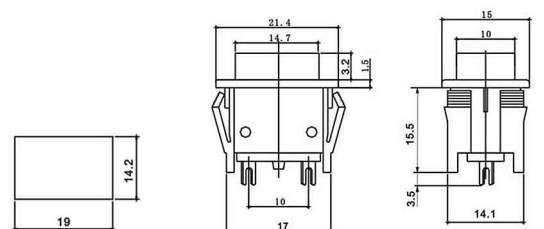
PS28B OFF-(ON)
 4 A 125 VAC; 2 A 250 VAC



PS29B OFF-(ON)



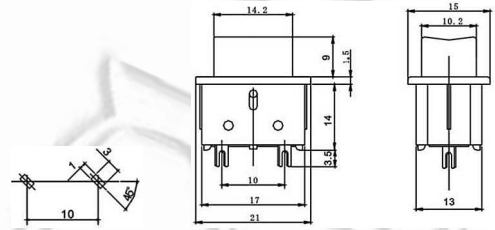
PS30B OFF-(ON)



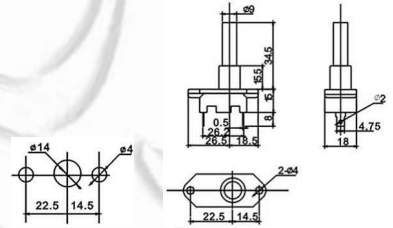
Ninigi



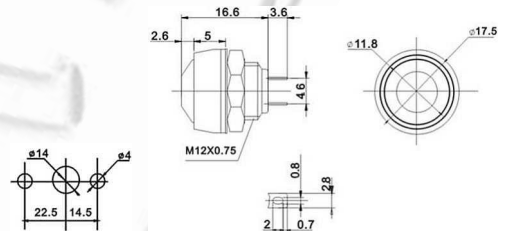
PS31B OFF-(ON)



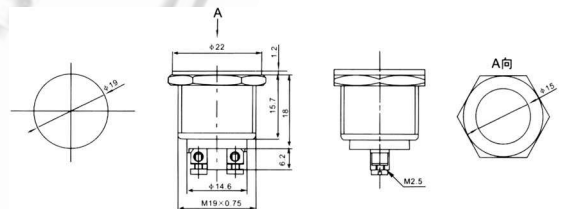
PS32B OFF-(ON)
10 A 125 VAC; 6 A 250 VAC



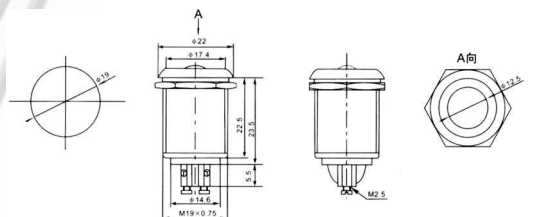
PS33B OFF-(ON)



PS28B-2 OFF-(ON)
4 A 125 VAC; 2 A 250 VAC



PS28B-3 OFF-(ON)
4 A 125 VAC; 2 A 250 VAC



X-ON Electronics

Largest Supplier of Electrical and Electronic Components

Click to view similar products for [Pushbutton Switches](#) category:

Click to view products by [Ninigi](#) manufacturer:

Other Similar products are found below :

[LW1L-M1C10V-A](#) [LW2L-A1C20M-GD](#) [LW2L-M1C20M-A](#) [60324L](#) [M7E-HRN2](#) [67021K512](#) [67081K512X](#) [701PB580](#) [719-5504-000](#)
[MDPSSGLFS](#) [810KSV30B](#) [MML21KA3ABK](#) [MML23KA3AC05K-001](#) [MML23KW3AA01W](#) [8418K2](#) [8646AB6X718UL](#) [8646ABUL](#)
[FSDWH](#) [9001KXRK](#) [9001T8BK](#) [9533CD4+U574+U4922](#) [1203MRA](#) [A22EM01S](#) [A595](#) [1202A6](#) [12037A2ULCSA](#) [1203A2UL](#) [ABD122N-](#)
[B](#) [1211390004](#) [ABN111-Y](#) [ABN400-R](#) [1211500044](#) [1211580012](#) [1212MRA](#) [1232A6NF](#) [RA3CSH6A](#) [1241.1183.7047](#) [1241.2511](#)
[1241.3428](#) [1223A2ULCSA](#) [1223MRA](#) [1232AX2119](#) [1241.1183.8000](#) [1241.1183.8029](#) [1241.2506](#) [1241.2606](#) [12MA6](#) [1301940184](#)
[RELBARF6X10\(PLASTIC\)](#) [13435AG](#)