

# UNIVERSAL ENCLOSURES

## 2000 Clear Lid

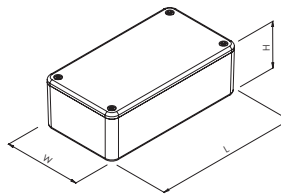
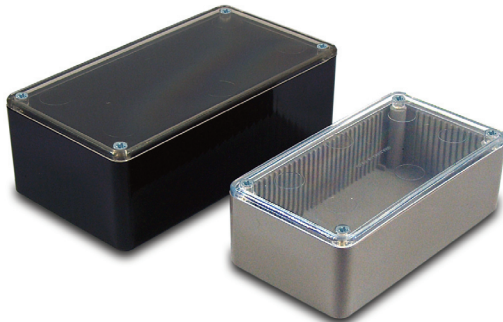
Extensive range of electronic enclosures for applications that require visible electronics such as LED's or meters.

- Lid moulded in transparent high impact ABS
- Lid mounted by four M3 machine screws
- Polished finish for ease of cleaning
- Integral mounting guides to accept 1.6mm PCB's
- PCB Adaptors (included) for horizontal PCB mounting

### SPECIFICATION

Materials	Base high impact ABS Lid transparent high impact ABS
Operating Temperature	Resistant to temperatures of up to 85°C
Protection class	IP54
Standard colours	Grey(GY), Black(BK), Ivory(WH)
Standard unit includes	Base & clear lid 4x M3 machine screws PCB adaptors

GREY	BLACK	IVORY	LENGTH	WIDTH	HEIGHT
BIM2008/18-GY/CL	BIM2008/18-BLK/CL	BIM2008/18-WH/CL	55mm	55mm	42mm
BIM2000/10-GY/CL	BIM2000/10-BLK/CL	BIM2000/10-WH/CL	75mm	50mm	27mm
BIM2001/11-GY/CL	BIM2001/11-BLK/CL	BIM2001/11-WH/CL	85mm	56mm	39mm
BIM2002/12-GY/CL	BIM2002/12-BLK/CL	BIM2002/12-WH/CL	100mm	50mm	25mm
BIM2003/13-GY/CL	BIM2003/13-BLK/CL	BIM2003/13-WH/CL	112mm	62mm	31mm
BIM2007/17-GY/CL	BIM2007/17-BLK/CL	-	112mm	62mm	31mm
BIM2004/14-GY/CL	BIM2004/14-BLK/CL	BIM2004/14-WH/CL	120mm	65mm	40mm
BIM2005/15-GY/CL	BIM2005/15-BLK/CL	BIM2005/15-WH/CL	150mm	80mm	50mm
BIM2006/16-GY/CL	BIM2006/16-BLK/CL	BIM2006/16-WH/CL	190mm	110mm	60mm



## 2000 Lugged Lid

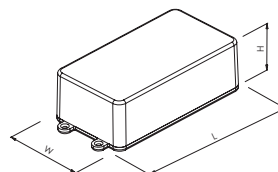
Electronics enclosures with lugged lid, for broad range of surface mounting applications. Provides extra security once mounted by restricting access to the screws in the lid.

- Lugged Lid and base moulded in ABS
- Lid mounted by four M3 machine screws
- Polished finish for ease of cleaning
- Excellent properties for machining
- Integral mounting guides to accept 1.6mm PCB's
- PCB Adaptors (included) for horizontal PCB mounting

### SPECIFICATION

Materials	Lid & base high impact ABS
Operating Temperature	Resistant to temperatures of up to 85°C
Protection class	IP54
Standard colours	Grey(GY), Black(BK), Ivory(WH)
Standard unit includes	Base & lugged lid 4x M3 machine screws PCB adaptors

GREY	BLACK	IVORY	LENGTH	WIDTH	HEIGHT
BIM2003/LUG-GY/GY	BIM2003/LUG-BLK/BLK	BIM2003/LUG-WH/WH	132mm	62mm	31mm
BIM2004/LUG-GY/GY	BIM2004/LUG-BLK/BLK	BIM2004/LUG-WH/WH	140mm	65mm	40mm
BIM2005/LUG-GY/GY	BIM2005/LUG-BLK/BLK	BIM2005/LUG-WH/WH	172mm	80mm	50mm



## X-ON Electronics

Largest Supplier of Electrical and Electronic Components

*Click to view similar products for* [Enclosures, Boxes, & Cases](#) *category:*

*Click to view products by* [Camden](#) *manufacturer:*

Other Similar products are found below :

[CR-425 PAINTED](#) [585-R-WH-PK](#) [M-10-PLATED](#) [60221-01](#) [60566-01-000](#) [HPL-9VB BATT DOOR](#) [M-16-LID-PLATED](#) [M18-PLTD](#) [M-21-LID-PLATED](#) [M-21-PLATED](#) [M-23-PLATED](#) [CU-281-MB](#) [6711GSKT](#) [71884-29-028](#) [LH45-100 Black](#) [7200B](#) [72868-510-000](#) [CNS-0000 Black](#) [72883-510-000](#) [CNS-0101 Black](#) [72906-510-000](#) [CNS-0407 Black](#) [73091-510-000](#) [CNM-0000-BLACK Kit](#) [73092-510-000](#) [CNM-0101 Black](#) [73108-510-000](#) [CNL-0303 Black](#) [73395-510-039](#) [CNS-0006 Bone](#) [74257-510-000](#) [CNL-0004](#) [MDC-1183-PLAIN-ALUM](#) [MDC-1183-PTD](#) [MDC-13104-PLAIN-ALUM](#) [MDC-211 - PAINTED IVORY/BEIGE](#) [MDC-321-PTD](#) [MDC-432-PLAIN-ALUM](#) [MDC-973-PTD](#) [76](#) [77153-01-028](#) [FLX6030](#) [83535-01-508](#) [PS-11296-G](#) [PS-11298-B](#) [116-508](#) [120-407](#) [120-412](#) [120-909](#) [120-455](#) [R272-100-000](#) [120-910](#) [R501-001-010](#) [R508-080-000](#) [R508-160-000](#) [R530-120-000](#) [R530-122-000](#) [R530-200-000](#) [R531-160-000](#) [R531-200-000](#) [R582-080-100](#)