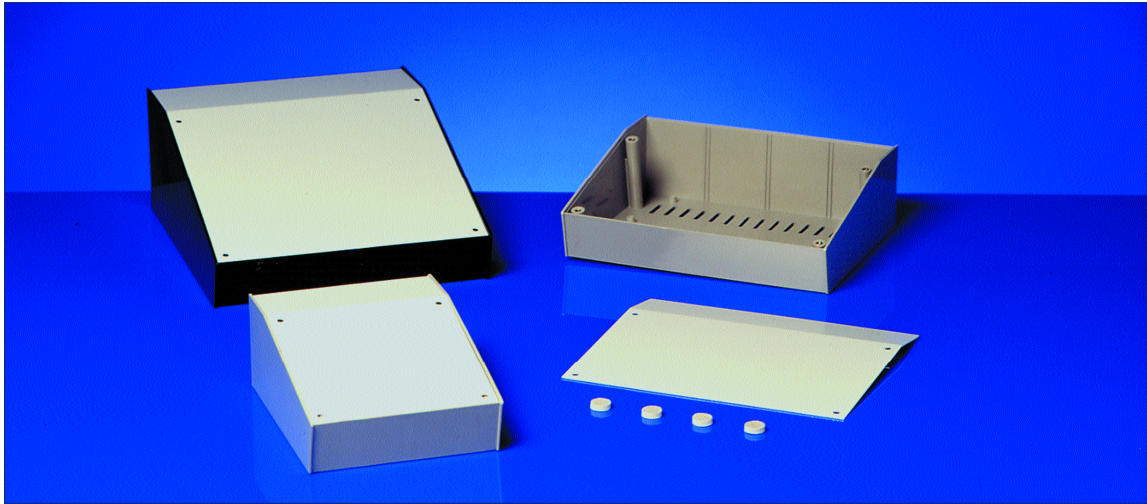


6000 Range Low Profile Desk Consoles

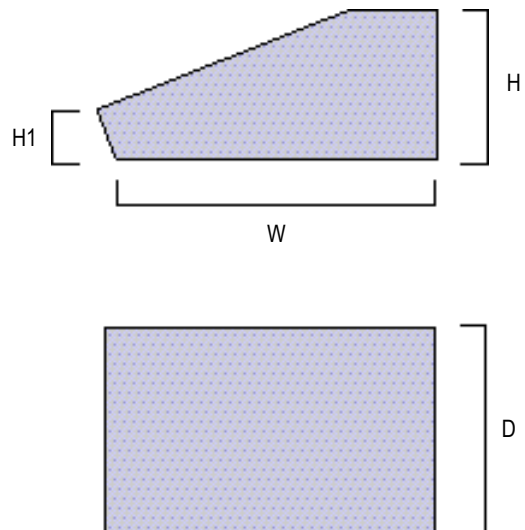


The 6000 range of small desk consoles are of a two piece construction. They incorporate 1mm thick, grey aluminium front panels which sit recessed into the top of the ABS bases and are held by four fixing screws running into integral brass inserts.

Available in three sizes and moulded in orange, blue, grey, white and black, these consoles incorporate eight stand-off bosses in the base as well as 1.8mm wide slots on two sides for supporting PCBs.

These ABS consoles have excellent electrical insulation properties and will withstand continuous heat up to 85°C, they are easily drilled or punched.

This machining work can be carried out at the factory and our sales department will be only too pleased to prepare a quotation to fulfil your specific requirements.



All specifications are subject to change without notice.

To order, specify as following example:

Part No
6006

Part No. Dimension (mm) and nominal

	W	H	H1	D
6005	143	55.5	31.5	105
6006	143	55.5	31.5	170
6007	214	82	31.5	170

X-ON Electronics

Largest Supplier of Electrical and Electronic Components

Click to view similar products for [camden manufacturer](#):

Other Similar products are found below :

[412689X](#) [CTBP92HE/10](#) [CTBP92VE/12R](#) [CTBP9350/12](#) [IND515205-240-T/GRN](#) [IND515205-240-T/RD](#) [IND5032405-240-T/GRN](#)
[CE10.00.EI](#) [C192SHAND](#) [RTM5006/16-PAT](#) [CNMB/6ST/2](#) [CNMB/4ST/2](#) [CSACST004](#) [CTBP9200/9](#) [CIME/M/BE2250SS](#) [CHH64E1BL](#)
[CIM/15W-DMFS](#) [CHHBAT2GY](#) [CFTBN/2](#) [CCB2S1/04](#) [CHDX6-221C](#) [CHDX6-222C](#) [CHDX8-224](#) [CHDASMP29](#) [CHDASMP34](#)
[CHDX810DD](#) [CHDX811DD](#) [CCTTM40LR](#) [CTBP92VJ/5S](#) [CTBP92VJ/8R](#) [CTSN431/12/M](#) [CTSN433/12/M](#) [CUABOX006](#) [IND513113-](#)
[LED-RD](#) [CE10.00.FM](#) [CBRPH-BLK](#) [BIM2003/13-WH/WH](#) [RX2008/S-5-WH](#) [CBARD-CAR](#) [CRDCG0007](#) [CNMB/4/KIT](#) [CTB5050/5](#)
[CTBP92HE/11](#) [CTBP9358/10AO](#) [CHH66C2GY](#) [CHH456PBK](#) [CHH451ABK](#) [CIM/9W-DMFS](#) [CIM/25W-DMFS](#) [RTM5004/14-NC-BLK](#)