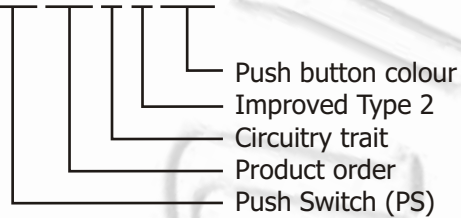


## Specification:

- 1) Rating (if not described next to the switch):  
3 A 125 VAC; 1 A 250 VAC
- 2) Contact Resistance: 20 mW max.
- 3) Insulation Resistance: 500 VDC 100 MW min.
- 4) Dielectric strength: 1000 VAC, 1 minute
- 5) Electrical Life: 50000 cycles

## PS10B2BK



## CIRCUITRY TRAIT

A	ON - OFF	Push on/Push off	With lock
B	OFF - (ON)	Push on	Momentary
C	ON - (OFF)	Push off	Momentary

( ) indicates momentary

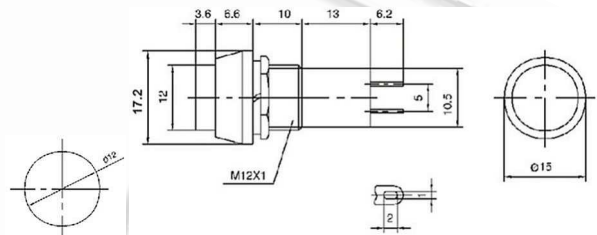
## PUSH BUTTON COLOUR

RD	red
GN	green
OR	orange
BU	blue
WH	white
BK	black
YL	yellow

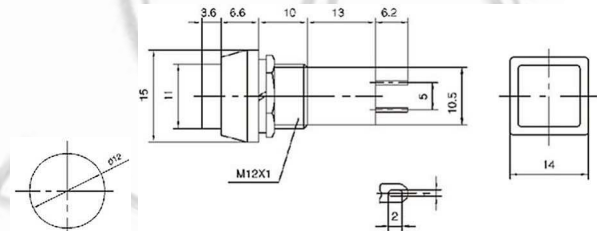
# Ninigi



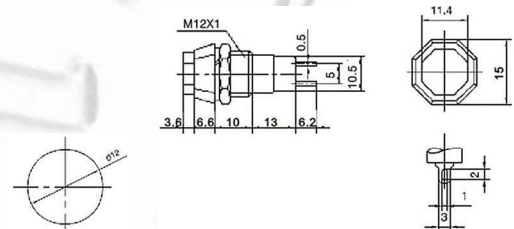
**PS11A** ON-OFF  
**PS11B** OFF-(ON)  
**PS11C** ON-(OFF)



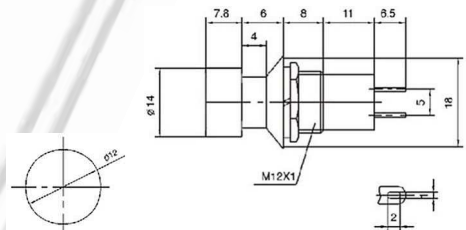
**PS12A** ON-OFF  
**PS12B** OFF-(ON)  
**PS12C** ON-(OFF)



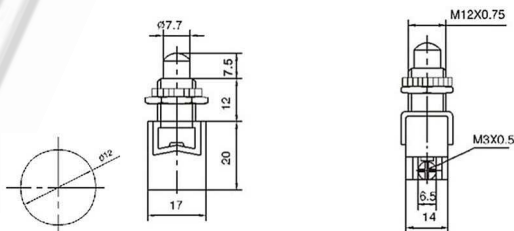
**PS14A** ON-OFF  
**PS14B** OFF-(ON)  
**PS14C** ON-(OFF)



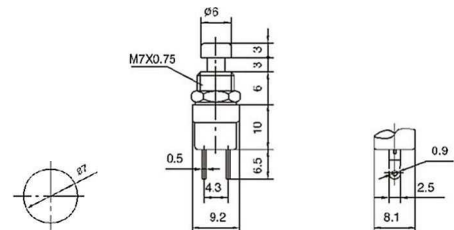
**PS16A** ON-OFF  
**PS16B** OFF-(ON)  
**PS16C** ON-(OFF)



**PS13B** OFF-(ON)  
**PS13C** ON-(OFF)  
 8 A 125 VAC; 4 A 250 VAC



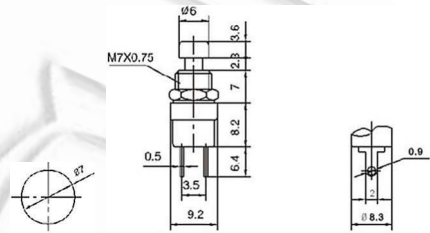
**PS10B** OFF-(ON)  
 (plastic rod)



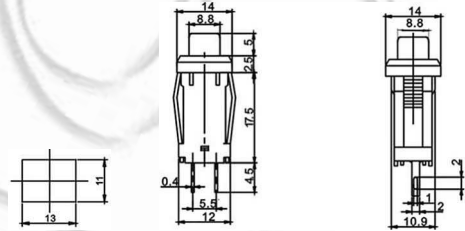
# Ninigi



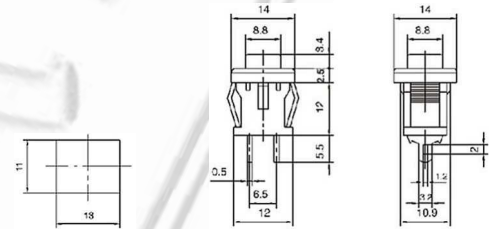
**PS10B2** OFF-(ON)  
**PS10C2** ON-(OFF)  
 (metal rod)



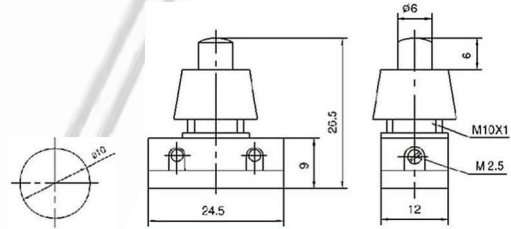
**PS15A** ON-OFF



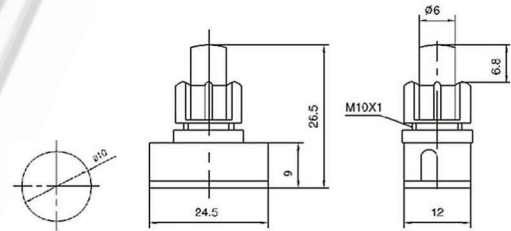
**PS15B** OFF-(ON)  
**PS15C** ON-(OFF)



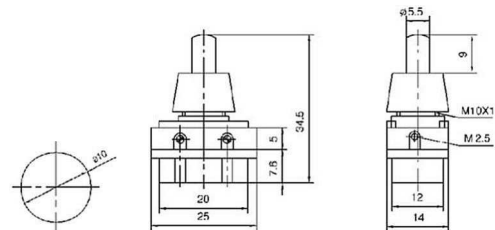
**PS17A** ON-OFF  
 4 A 125 VAC; 2 A 250 VAC



**PS17A2** ON-OFF  
 (PS17B)



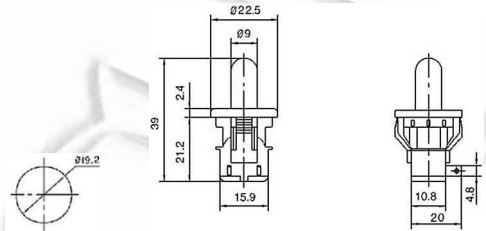
**PS17A3** ON-OFF  
 (PBS-17B)  
 4 A 125 VAC; 2 A 250 VAC



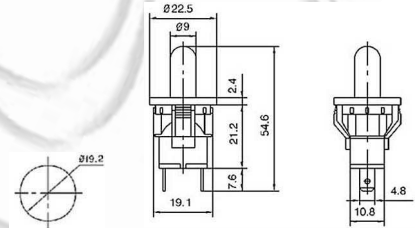
# Ninigi



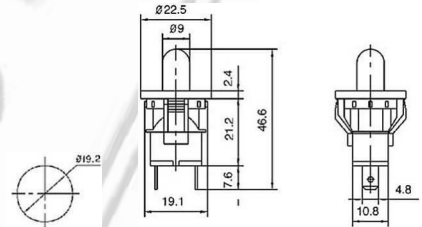
**PS19B** OFF-(ON)  
**PS19C** ON-(OFF)  
 5 A 125 VAC; 2.5 A 250 VAC



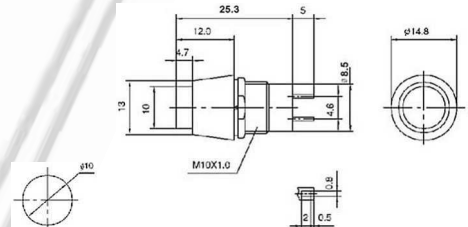
**PS19B2** OFF-(ON)  
**PS19C2** ON-(OFF)  
 5 A 125 VAC; 2.5 A 250 VAC



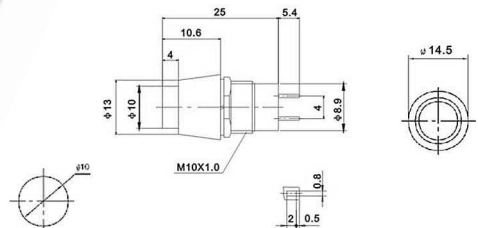
**PS19B3** OFF-(ON)  
**PS19C3** ON-(OFF)  
 5 A 125 VAC; 2.5 A 250 VAC



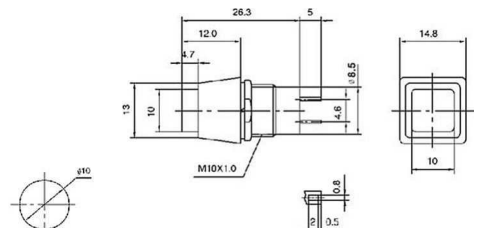
**PS20A** ON-OFF  
**PS20B** OFF-(ON)



**PS20A2** ON-OFF  
**PS20B2** OFF-(ON)



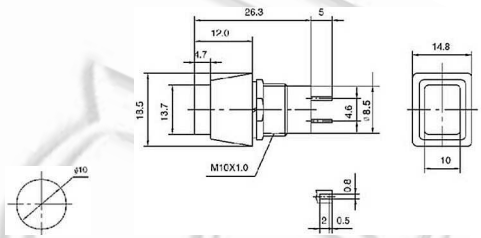
**PS21A** ON-OFF  
**PS21B** OFF-(ON)



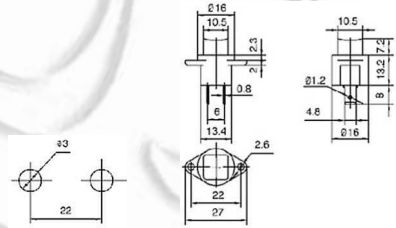
# Ninigi



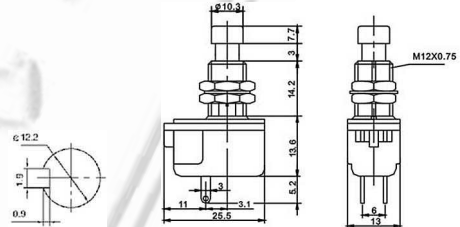
**PS22A** ON-OFF  
**PS22B** OFF-(ON)



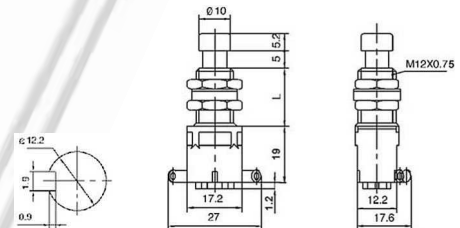
**PS23B** OFF-(ON)



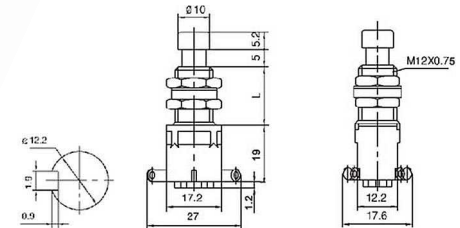
**PS24B2** OFF-(ON)  
**PS24C2** ON-(OFF)  
10 A 125 VAC; 2.5 A 250 VAC  
SPST 2P



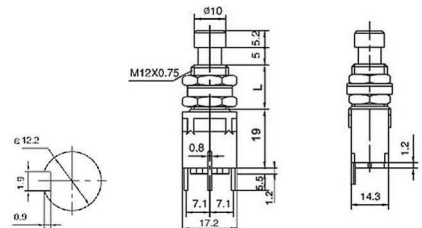
**PS24102** ON-ON  
**PS24112** ON-(ON)  
4 A 125 VAC; 2 A 250 VAC  
SPDT 3P  
(L=14.2, 11.8, 9.8)



**PS24202** ON-ON  
**PS24212** ON-(ON)  
4 A 125 VAC; 2 A 250 VAC  
DPDT 6P  
(L=14.2, 11.8, 9.8)



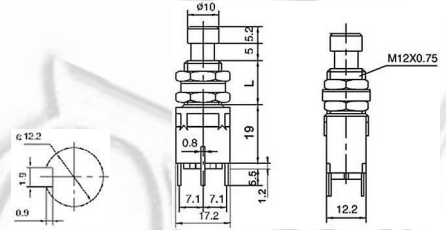
**PS24102P** ON-ON  
**PS24112P** ON-(ON)  
4 A 125 VAC; 2 A 250 VAC  
SPDT 3P  
(L=14.2, 11.8, 9.8)



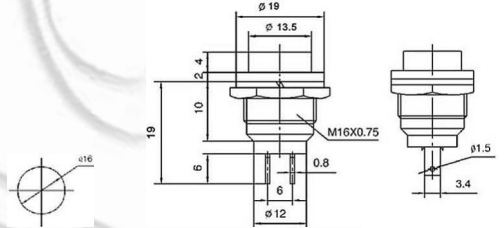
# Ninigi



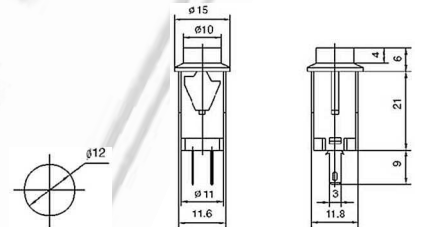
**PS24202P** ON-ON  
**PS24212P** ON-(ON)  
 4 A 125 VAC; 2 A 250 VAC  
 DPDT 6P  
 (L=14.2, 11.8, 9.8)



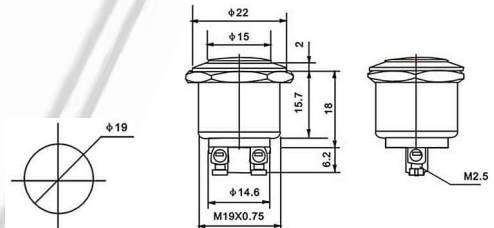
**PS26B** OFF-(ON)  
**PS26C** ON-(OFF)  
 4 A 125 VAC; 2 A 250 VAC



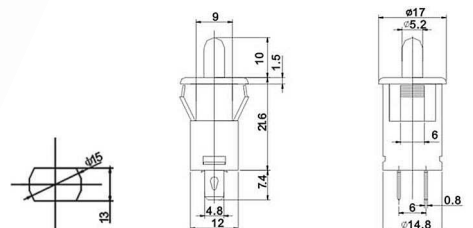
**PS27B** OFF-(ON)



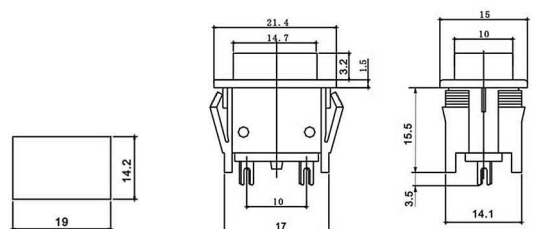
**PS28B** OFF-(ON)  
 4 A 125 VAC; 2 A 250 VAC



**PS29B** OFF-(ON)



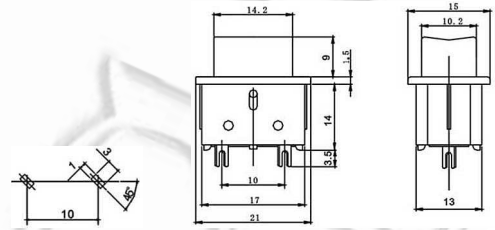
**PS30B** OFF-(ON)



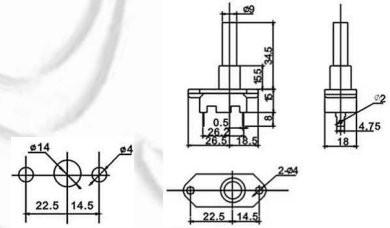
# Ninigi



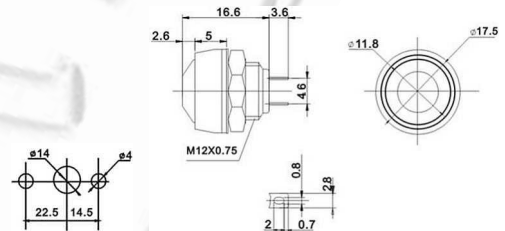
**PS31B** OFF-(ON)



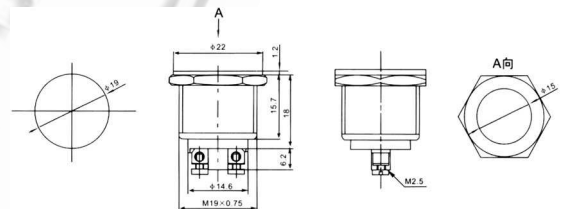
**PS32B** OFF-(ON)  
10 A 125 VAC; 6 A 250 VAC



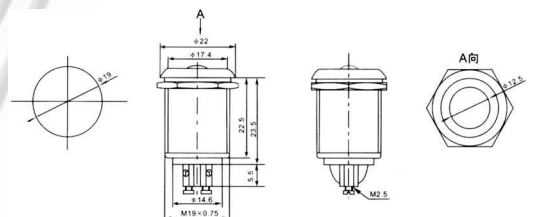
**PS33B** OFF-(ON)



**PS28B-2** OFF-(ON)  
4 A 125 VAC; 2 A 250 VAC



**PS28B-3** OFF-(ON)  
4 A 125 VAC; 2 A 250 VAC



## X-ON Electronics

Largest Supplier of Electrical and Electronic Components

*Click to view similar products for [Pushbutton Switches](#) category:*

*Click to view products by [Ninigi](#) manufacturer:*

Other Similar products are found below :

[LW1L-M1C10V-A](#) [LW2L-A1C20M-GD](#) [LW2L-M1C20M-A](#) [60324L](#) [M7E-HRN2](#) [67021K512](#) [67081K512X](#) [701PB580](#) [719-5504-000](#)  
[MDPSSGLFS](#) [810KSV30B](#) [MML21KA3ABK](#) [MML23KA3AC05K-001](#) [MML23KW3AA01W](#) [8418K2](#) [8646AB6X718UL](#) [8646ABUL](#)  
[FSDWH](#) [9001KXRK](#) [9001T8BK](#) [9533CD4+U574+U4922](#) [1203MRA](#) [A22EM01S](#) [A595](#) [1202A6](#) [12037A2ULCSA](#) [1203A2UL](#) [ABD122N-](#)  
[B](#) [1211390004](#) [ABN111-Y](#) [ABN400-R](#) [1211500044](#) [1211580012](#) [1212MRA](#) [1232A6NF](#) [RA3CSH6A](#) [1241.1183.7047](#) [1241.2511](#)  
[1241.3428](#) [1223A2ULCSA](#) [1223MRA](#) [1232AX2119](#) [1241.1183.8000](#) [1241.1183.8029](#) [1241.2506](#) [1241.2606](#) [12MA6](#) [1301940184](#)  
[RELBARF6X10\(PLASTIC\)](#) [13435AG](#)