

Ferrule fuse-links 10x38 gG 400 to 690VAC

IEC LV Cylindrical fuse-links

Mersen aM and gG fuse-links cover a wide range of physical sizes and ampere ratings for 400, 500, and 690VAC for protection in electrical distribution circuits and various industrial applications. Most ratings are available in size 8x31 and size 10x38 with an optional indicator, and in size 14x51 and 22x58 with an optional striker to activate an auxiliary contact. All cylindrical fuse-links have ceramic bodies and silver-plated ferrules. Our technology and process was designed to ensure highly reliable technical performance.

Features Benefits

- Small size
- Full range protection
- Visual blown fuse indication
- Safest and most reliable protection system

Applications

- gG type for protection of line, cable against overload and short circuit in various industrial application and electrical distribution circuits.

Technical data overview

Voltage Range (VAC)	400 ... 690 VAC
Ampere Range (A)	0.5 ... 32 A
Speed/Characteristic	gG
I.R. AC (kA)	120 kA
Product Size	10x38 mm
Body Material	Ceramic
Materials Contact	Silver plated copper



Standards

IEC 60269-1 & -2

Approved by Lloyd's Register of Shipping and Bureau Veritas



Ferrule fuse-links 10x38 gG 400 to 690VAC

Product range



FR10G-
G50V0.5

Size 10,3x38 400/500VAC without indicator

Catalog number	Reference number	Rated voltage AC (IEC)	Rated current I _n	Rated breaking capacity AC	Power dissipation at I _n
FR10GG50V0.5	C211027	500 V	0.5 A	120 kA	0.07 W
FR10GG50V1	B212061	500 V	1 A	120 kA	0.45 W
FR10GG50V2	D213098	500 V	2 A	120 kA	0.5 W
FR10GG50V4	X213598	500 V	4 A	120 kA	0.85 W
FR10GG50V6	K215128	500 V	6 A	120 kA	0.95 W
FR10GG50V8	D217169	500 V	8 A	120 kA	1.15 W
FR10GG50V16	G200750	500 V	16 A	120 kA	1.9 W
FR10GG50V12	W219761	500 V	12 A	120 kA	1.4 W
FR10GG50V10	S218194	500 V	10 A	120 kA	1.3 W
FR10GG50V20	D211028	500 V	20 A	120 kA	2.4 W
FR10GG50V25	E213099	500 V	25 A	120 kA	2.7 W
FR10GG40V32	A214107	400 V	32 A	120 kA	2.8 W



FR10G-
G50V2I

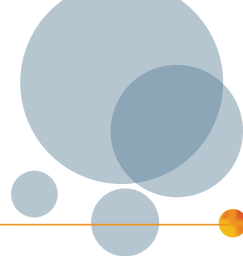
Size 10,3x38 400/500VAC with indicator

Catalog number	Reference number	Rated voltage AC (IEC)	Rated current I _n	Rated breaking capacity AC	Power dissipation at I _n
FR10GG40V32I	Z213600	400 V	32 A	120 kA	2.8 W
FR10GG50V10I	E222207	500 V	10 A	120 kA	1.3 W
FR10GG50V12I	H200751	500 V	12 A	120 kA	1.4 W
FR10GG50V16I	H201809	500 V	16 A	120 kA	1.9 W
FR10GG50V20I	X211551	500 V	20 A	120 kA	2.4 W
FR10GG50V25I	W212585	500 V	25 A	120 kA	2.7 W
FR10GG50V2I	S216653	500 V	2 A	120 kA	0.5 W
FR10GG50V4I	E217170	500 V	4 A	120 kA	0.85 W
FR10GG50V6I	T218195	500 V	6 A	120 kA	0.95 W
FR10GG50V8I	V219231	500 V	8 A	120 kA	1.15 W

Size 10,3x38 250/400VAC with striker

Catalog number	Reference number	Rated voltage AC (IEC)	Rated current I _n
FR10GG25V32P	E083954	250 V	32 A
FR10GG40V16P	X084798	400 V	16 A
FR10GG25V25P	H083957	250 V	25 A
FR10GG40V10P	A084801	400 V	10 A
FR10GG40V12P	G083956	400 V	12 A
FR10GG40V20P	Z084800	400 V	20 A
FR10GG40V2P	G083703	400 V	2 A
FR10GG40V4P	D084758	400 V	4 A
FR10GG40V6P	Y084799	400 V	6 A
FR10GG40V8P	F083955	400 V	8 A

Ferrule fuse-links 10x38 gG 400 to 690VAC

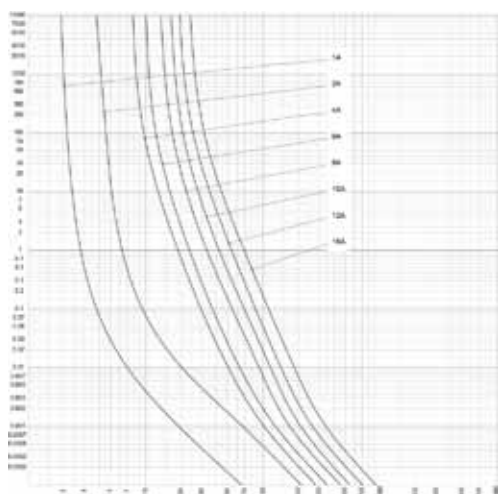
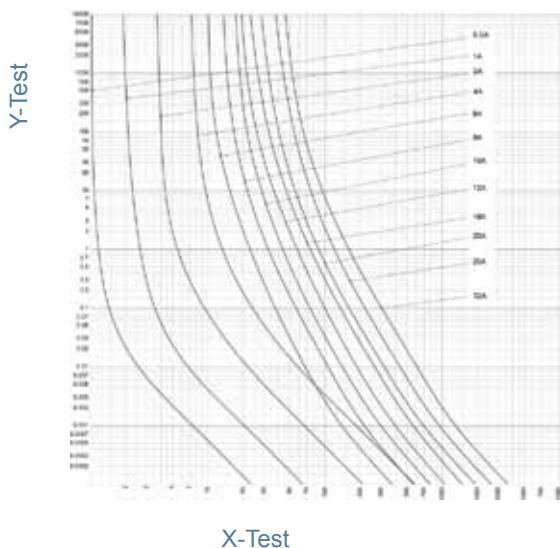


Product range

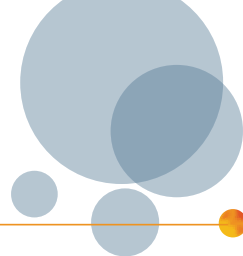
Size 10,3x38 690VAC without indicator

Catalog number	Reference number	Rated voltage AC (IEC)	Rated current I_n	Rated breaking capacity AC	Power dissipation at I_n
FR10GG69V1	R302787	690 V	1 A	120 kA	0.45 W
FR10GG69V10	X302792	690 V	10 A	120 kA	1.15 W
FR10GG69V12	Y302793	690 V	12 A	120 kA	1.4 W
FR10GG69V16	Z302794	690 V	16 A	120 kA	1.9 W
FR10GG69V2	S302788	690 V	2 A	120 kA	0.55 W
FR10GG69V4	T302789	690 V	4 A	120 kA	0.6 W
FR10GG69V6	V302790	690 V	6 A	120 kA	0.9 W
FR10GG69V8	W302791	690 V	8 A	120 kA	1 W

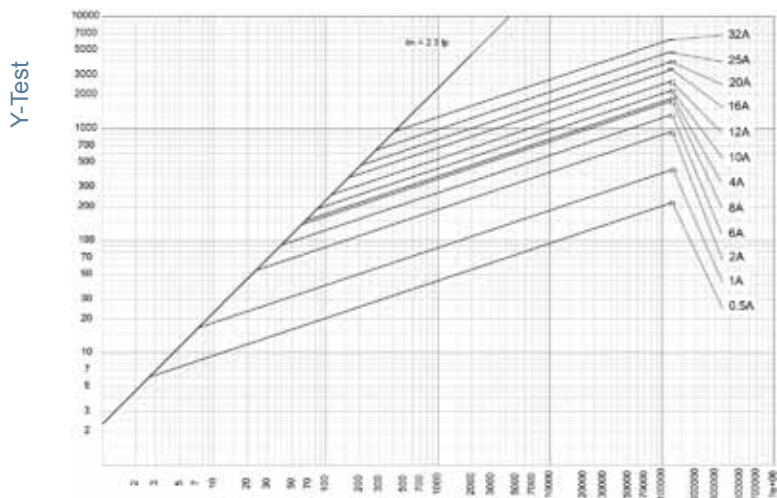
Time current characteristic curves



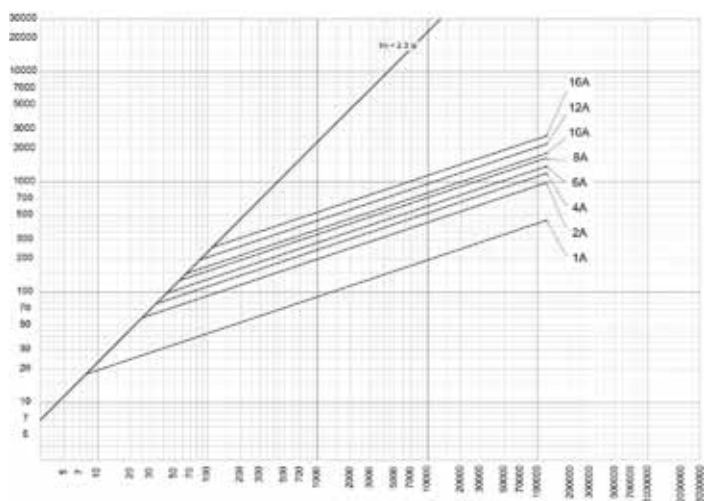
Ferrule fuse-links 10x38 gG 400 to 690VAC



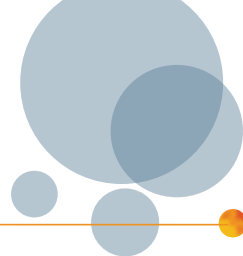
Current limiting diagram



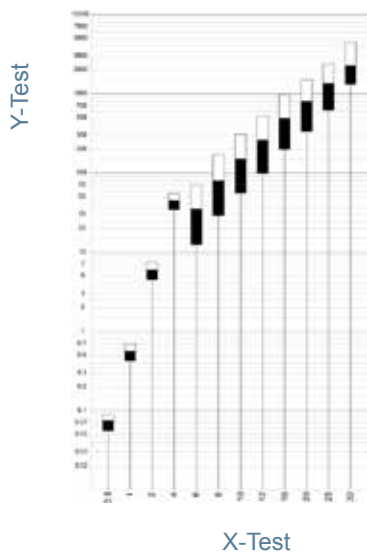
X-Test



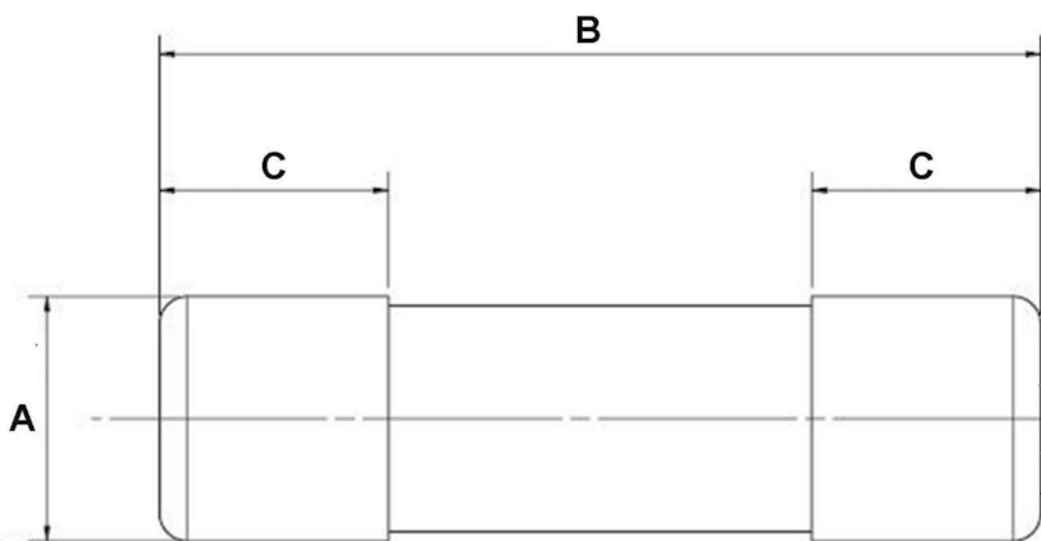
Ferrule fuse-links 10x38 gG 400 to 690VAC



Characteristics total I²t curve



Dimensions



X-ON Electronics

Largest Supplier of Electrical and Electronic Components

Click to view similar products for [Specialty Fuses](#) category:

Click to view products by [Mersen](#) manufacturer:

Other Similar products are found below :

[63NZ02GL](#) [714125](#) [722134](#) [80NH00GR-6](#) [FWH-200A](#) [FWP-32A14F](#) [FWP-50](#) [HBM-25](#) [12LCT](#) [12TDLSJ63](#) [REN-3](#) [15.5CAVH2E](#) [ECF-2](#)
[ECF-4](#) [ECF-6](#) [170M0213](#) [170M1314](#) [170M1369-D](#) [170M3809D](#) [BK/F02A-2AS](#) [BK/F02B-1A](#) [N-2-1/2](#) [N-3-2/10](#) [NITD2](#) [20D16](#) [20D16SC](#)
[20D27FB](#) [KAA-3](#) [KAB-2](#) [KAB-30](#) [KAJ-60](#) [KAW-3](#) [2D16](#) [LKN-125B](#) [16D27SB](#) [170M1564D](#) [170M2616](#) [170M2668](#) [170M4161](#)
[170M4241](#) [170M4699](#) [ESD63](#) [ABS-25](#) [ABS-30](#) [ABS-8](#) [ACF-15](#) [ACF-30](#) [ACO-30](#) [SSD10](#) [200NH1M](#)