

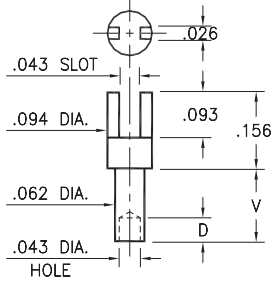
# MALE PCB PINS

## SOLDER TERMINALS SLOTTED

### 2315

2315-X-01-XX-00-00-07-0

Swage mount in .067 hole

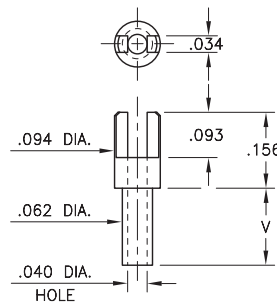


| Basic Part Number | Board Thickness | Length V | Depth D |
|-------------------|-----------------|----------|---------|
| 2315-1            | .031            | .045     | .040    |
| 2315-2            | .062            | .094     | .062    |
| 2315-3            | .094            | .125     | .062    |
| 2315-4            | .125            | .156     | .062    |

### 2302

2302-X-01-XX-00-00-07-0

Swage mount in .067 hole

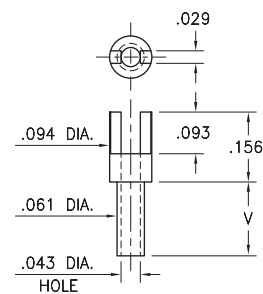


| Basic Part Number | Board Thickness | Length V |
|-------------------|-----------------|----------|
| 2302-1            | .031            | .053     |
| 2302-2            | .062            | .084     |
| 2302-3            | .094            | .115     |
| 2302-4            | .125            | .147     |

### 2352

2352-X-01-XX-00-00-07-0

Swage mount in .067 hole

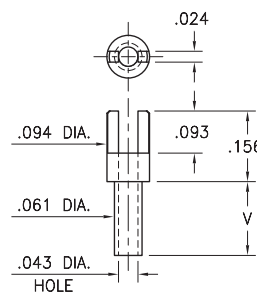


| Basic Part Number | Board Thickness | Length V |
|-------------------|-----------------|----------|
| 2352-1            | .031            | .045     |
| 2352-2            | .062            | .094     |
| 2352-3            | .094            | .125     |
| 2352-4            | .125            | .156     |

### 2362

2362-X-01-XX-00-00-07-0

Swage mount in .067 hole

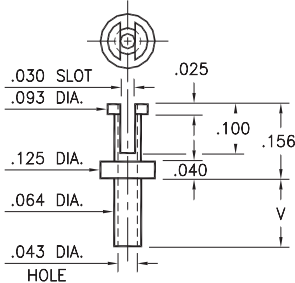


| Basic Part Number | Board Thickness | Length V |
|-------------------|-----------------|----------|
| 2362-5            | .016            | .037     |
| 2362-1            | .031            | .053     |
| 2362-2            | .062            | .084     |
| 2362-3            | .094            | .115     |
| 2362-4            | .125            | .147     |

### 2507

2507-X-01-XX-00-00-07-0

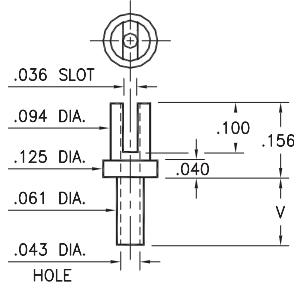
Swage mount in .067 hole



### 2526

2526-X-01-XX-00-00-07-0

Swage mount in .064 hole



| Basic Part Number | Board Thickness | Length V |
|-------------------|-----------------|----------|
| 25XX-1            | .031            | .053     |
| 25XX-2            | .062            | .084     |
| 25XX-3            | .094            | .115     |
| 25XX-4            | .125            | .147     |

#### SPECIFICATIONS:

**Pin Material:** Brass Alloy 360, 1/2 Hard  
(Swage pins are annealed)

**Dimensions:** Inches

**Tolerances On:** Lengths:  $\pm .005$   
Diameters:  $\pm .002$   
Angles:  $\pm 2^\circ$



ORDER CODE: XXXX - X - 01 - XX - 00 - 00 - 07 - 0

BASIC PART #

SPECIFY PIN FINISH:

- 01 200  $\mu$ " TIN/LEAD OVER NICKEL
- ◆ 80 200  $\mu$ " TIN OVER NICKEL (RoHS)
- ◆ 44 300  $\mu$ " SILVER OVER COPPER (RoHS)
- 50 300  $\mu$ " ELECTRO-SOLDER  
(60/40 SnPb)



## X-ON Electronics

Largest Supplier of Electrical and Electronic Components

*Click to view similar products for [Circuit Board Hardware - PCB category](#):*

*Click to view products by [Mill-Max manufacturer](#):*

Other Similar products are found below :

[8919-0-00-15-00-00-03-0](#) [0132-0-15-01-30-27-04-0](#) [0135-0-15-01-30-27-04-0](#) [5970-1-15-01-32-14-04-0](#) [0132-0-15-15-30-27-04-0](#) [0135-0-15-15-30-27-04-0](#) [0149-0-15-15-30-27-04-0](#) [MBI 1 BLUE](#) [7305-0-15-15-47-14-10-0](#) [MKU 1 BLACK](#) [MLN 150/1 BLACK](#) [8579-0-15-80-11-27-10-0](#) [8579-1-15-15-11-27-10-0](#) [8637-0-15-15-21-14-10-0](#) [8830-0-15-01-22-14-10-0](#) [8836-0-00-21-00-00-03-0](#) [PRUEF 2 RED](#) [9976-0-00-00-00-00-03-0](#) [1178-0-01-80-00-00-03-0](#) [PW1616](#) [1215-3-05-00-00-00-01-0](#) [1303-0-15-15-47-14-04-0](#) [1404-3](#) [1404-4](#) [1406-4](#) [1407-3](#) [1406-3](#) [1407-4](#) [1408-3](#) [1424-4](#) [1426-3](#) [1427-3](#) [1427-4](#) [1428-3](#) [1419-4](#) [1424-3](#) [1426-4](#) [1428-4](#) [MPS 1 BLACK](#) [1520150-1](#) [1548-103](#) [1801-0-15-15-30-27-04-0](#) [1938-0-00-00-00-00-03-0](#) [1942-0-00-00-00-00-03-0](#) [2101-3-00-44-00-00-07-0](#) [2104-2-01-44-00-00-07-0](#) [2108-2-00-50-00-00-07-0](#) [2108-3-00-44-00-00-07-0](#) [2109-2-00-44-00-00-07-0](#) [2110-2-00-44-00-00-07-0](#)