

HellermannTyton

Cable Management Products

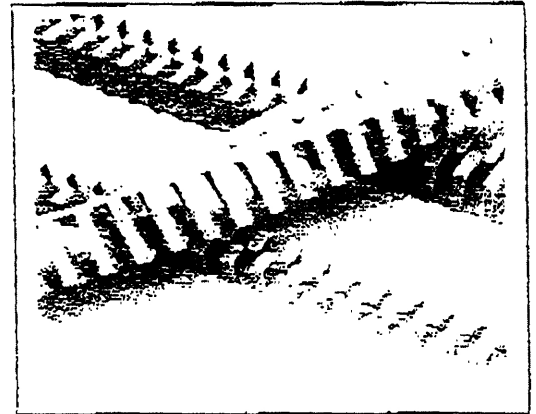
NEW PRODUCT INFORMATION

KANALFLEX

Kanalflex is a new patented design for panel trunking, increasing the number of cables that can be routed via a small area.

Specification Details:

- Manufactured from a Thermoplastic Polymer
- Colour RAL 7040 (Grey)
- Working Temperature -40°C to $+140^{\circ}\text{C}$
- Flame resistant to UL94 VO
- Dielectric constnt (ASSTM D2863)
- Available in half metre lengths
- Adhesive backed as standard
- Good resistance to UV rays and chemicals



Product Details:

Code	Description/Size	Pack Size	Discount Code
B0905	BK13A 12.5mm x 12.5mm	10 x 0.5mtr lengths	W
B0906	BK1616A 16mm x 16mm	10 x 0.5mtr lengths	W
B0907	BK2020A 20mm x 20mm	10 x 0.5mtr lengths	W
B0908	BK2525A 25mm x 25mm	10 x 0.5mtr lengths	W
B0909	BK3030A 30mm x 30mm	10 x 0.5mtr lengths	W
B0910	BK4040A 40mm x 40mm	10 x 0.5mtr lengths	W
B0911	BK5050A 50mm x 50mm	10 x 0.5mtr lengths	W

Wharf Approach
Alenage, Walsall
West Midlands WS3 8BX
Tel: 01922 458151 (6 lines)
Fax: 01922 743297 (Admin)
01922 743053 (Sales)

e-mail: sales@bowthorpe-hellermann.co.uk
Website: www.bowthorpe-hellermann.co.uk

A BOWTHORPE company

Registered Office:
Gadwick Road, Crawley
West Sussex
England

Reg. in England No. 470893

X-ON Electronics

Largest Supplier of Electrical and Electronic Components

Click to view similar products for [Wire Identification](#) category:

Click to view products by [Hellermann](#) manufacturer:

Other Similar products are found below :

[CU6337-000](#) [CU6342-000](#) [FCA-410-12](#) [11631010](#) [1-1768037-1](#) [1-1768037-2](#) [1-1768050-0](#) [PXLK-VI](#) [Q62184-1](#) [A64304-000](#) [QMT221](#)
[HK032WE1NF038B](#) [1330-0519-10](#) [1395199-1](#) [1395200-1](#) [1395202-1](#) [DMVF050WE-300S6](#) [D-SCE-1K-2.4-50-4-CS7834](#) [1538738-1](#)
[E90935-000](#) [EC1238-000](#) [EC1465-000](#) [EC1855-000](#) [EC1859-000](#) [EC1863-000](#) [EC5415-000](#) [EC7277-000](#) [EC7352-000](#) [EC7603-000](#)
[EC7707-000](#) [EC7735-000](#) [EC7768-000](#) [EC7828-000](#) [EC7854-000](#) [EC7952-000](#) [EC8128-000](#) [1768037-8](#) [1768041-7](#) [NC-127191-10-9](#)
[HS048WE2NF038B](#) [C03232-000](#) [HTCM-SCE-14-4H-9](#) [HTMS-3/16-9](#) [HT-SCE-1/4-2.0-4](#) [HT-SCE-3/16-2.0-4](#) [HTTMS-1/2-1.50-9](#) [HTTMS-](#)
[CM-1/2-4H-9](#) [HX-SCE-19.0-50-9](#) [HX-SCE-6.4-50-4](#) [C25254-000](#)