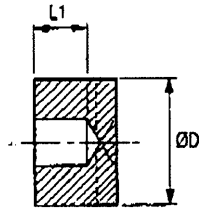


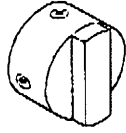
7075558  
7075923

# OLDHAM LATERAL OFFSET COUPLERS

## Blind hubs



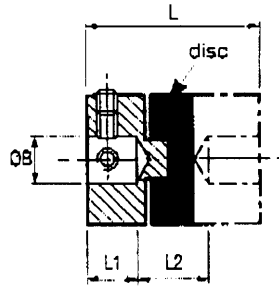
Controlled bore depth L1 provides a register when pre-assembling hubs to shafts



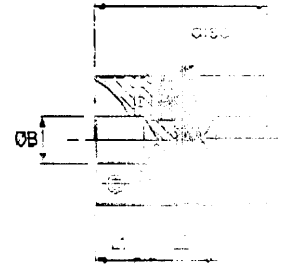
Set screw style



Clamp style

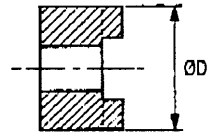


Refs. 232, 243  
Set screw style

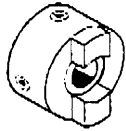


Refs. 234, 235, 245  
Clamp style

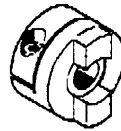
## Thro' hubs



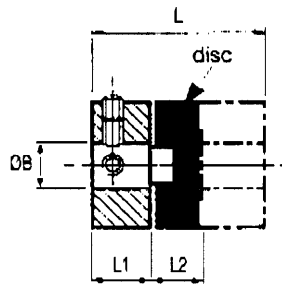
Thro' bores allow disc replacement without disturbing shaft alignment



Set screw style



Clamp style

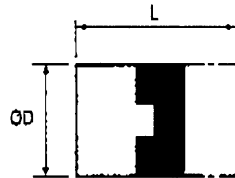
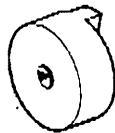


Refs. 450, 454  
Set screw style



Refs. 452, 453, 456  
Clamp style

## Blank hubs



User-adaptable for special needs, e.g. fitting within tubes. Blank hubs are supplied centred with no provision for fastening. External dimensions identical with blind hubs.

Coupler size	Complete hub ref.	OD	Length
06	231.09.00	25.4	12.7
09	231.09.00	31.8	12.7
13	231.13.00	38.1	12.7
19	231.19.00	47.6	12.7
25	231.25.00	57.1	12.7
33	230.33.00	66.6	12.7
41	231.41.00	76.2	12.7

## Standard discs (larger sizes are webbed)



**Acetal** - High torsional stiffness, good bearing properties, long backlash-free life.

**Nylon 11** - Resilient, isolates noise & vibration. Performance approximately 25% that of acetal disc.

## Thro' bored discs



Thro' bored discs allow shafts to near-butt, standard thro' hole diameter =  $\text{OD} \times 0.5$ . To order, add suffix 'T' to order code, eg., **236.25T**

Other thro' hole diameters are manufactured to order. Specify the disc ref. and thro' hole diameter. This should equal the larger shaft diameter + 2 x max radial error.

Note that thro' bored discs reduce torsional stiffness.

## HOW TO ORDER

Combine the HUB REF. from the Main Table with the BORE REF. from the Bores Table, eg. **452H25.26**

Hub ref. \_\_\_\_\_

Bore ref. \_\_\_\_\_

Order discs separately from the Main Table, eg.

**236.25**

Disc ref. \_\_\_\_\_

**ORDER 2 HUBS + 1 DISC PER COUPLER**

## HOW TO INSTALL

Correct installation is important for long life operation. See page 17 for details.



## X-ON Electronics

Largest Supplier of Electrical and Electronic Components

*Click to view similar products for [huco manufacturer](#):*

Other Similar products are found below :

[232P13.20.F](#) [236P13.F](#) [724.13.2020](#) [104221601FAR](#) [724.19.2020](#) [453P19.22.F](#) [466P33.3232.F](#) [104283601FAR](#) [232P13.24.F](#) [724.19.2222](#)  
[101281040FAR](#) [236P25.F](#) [207P18.2222.F](#) [236P19.F](#) [725.25.3232](#) [101281080FAR](#) [725.19.2020](#) [101281030FAR](#) [271P.25.28.F](#) [035940X](#)  
[403374X](#) [403383H](#) [403378B](#) [HSL.4070.08](#) [403369D](#) [035943E](#) [HSL3050.15](#) [035939H](#) [403382X](#) [HSL3050.30](#) [403376F](#) [035938X](#)  
[HSL3050.12](#) [HSL3050.08](#) [403381A](#) [403384F](#) [HSL3050.20](#) [403379X](#) [453P19.20.F](#) [HSL3050.05](#) [HTLP3050-14](#) [HSL3050.10](#) [035936C](#)  
[035937A](#) [HSL3050.25](#) [HSL3050.06](#) [403375H](#)