

## Category 5e 2 Port and 4 Port Angled Face Plate



**Category 5e 2 Port and 4 Port Angled Face Plate (FJ2-45 + FJ4-45)**

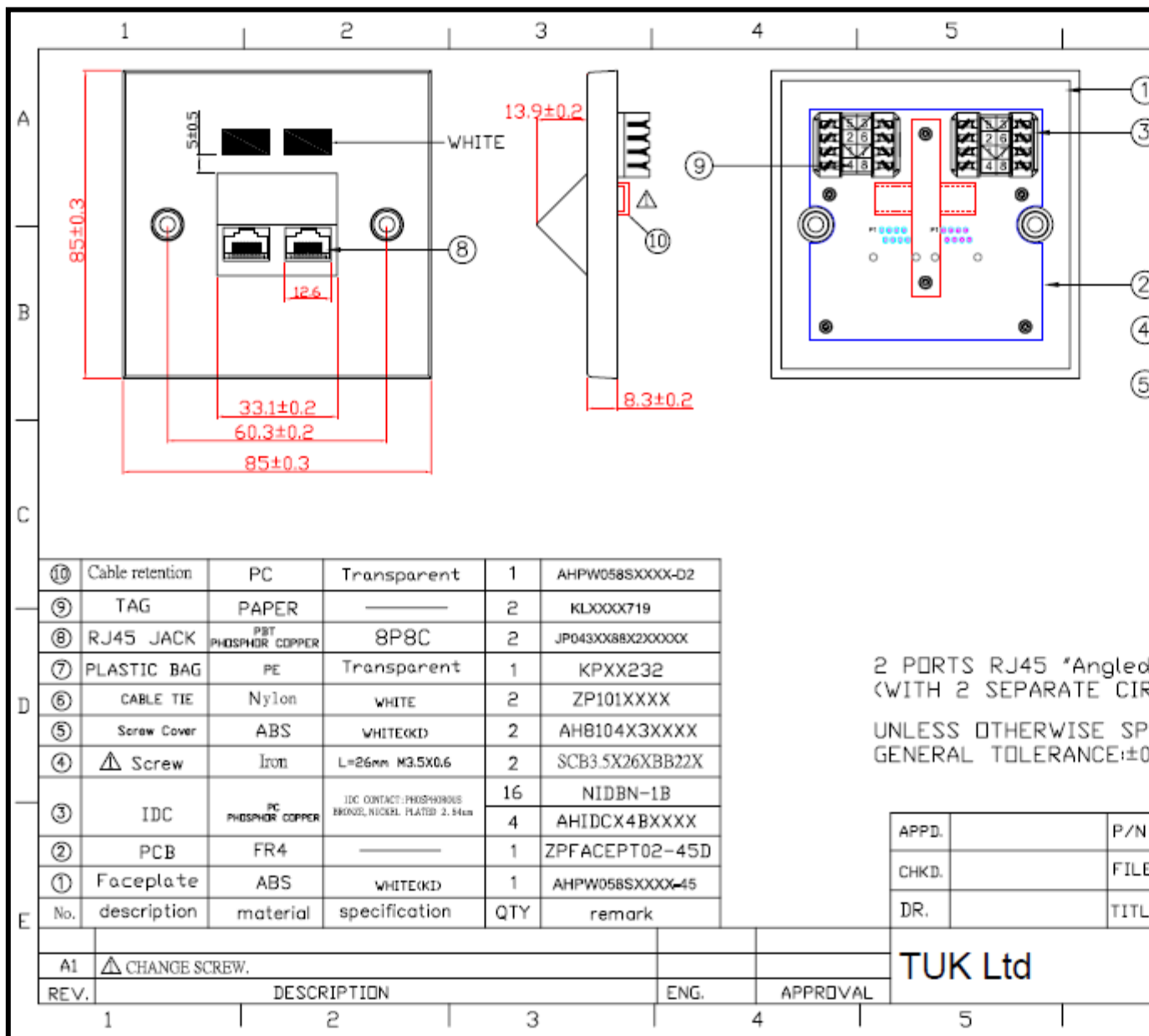
Compact and convenient 2 and 4 port one piece Category 5e faceplates with angled jacks. Both versions fit standard 86x86 back box

### ***Features***

- Available with 2 or 4 sockets
- Very compact design – both versions fit standard UK 86x86mm back box
- Angled socket reduces dust ingress and prevents strain on patch leads
- 568B wired, fitted with industry standard LSA+ type IDC connectors
- Labeling and cable tie facility

### ***Specifications***

- Weight: 50g (FJ2-45)/ 68g (FJ4-45) (approx)
- Colour: Bright white
- Materials: Faceplate - ABS, PCB – FR4



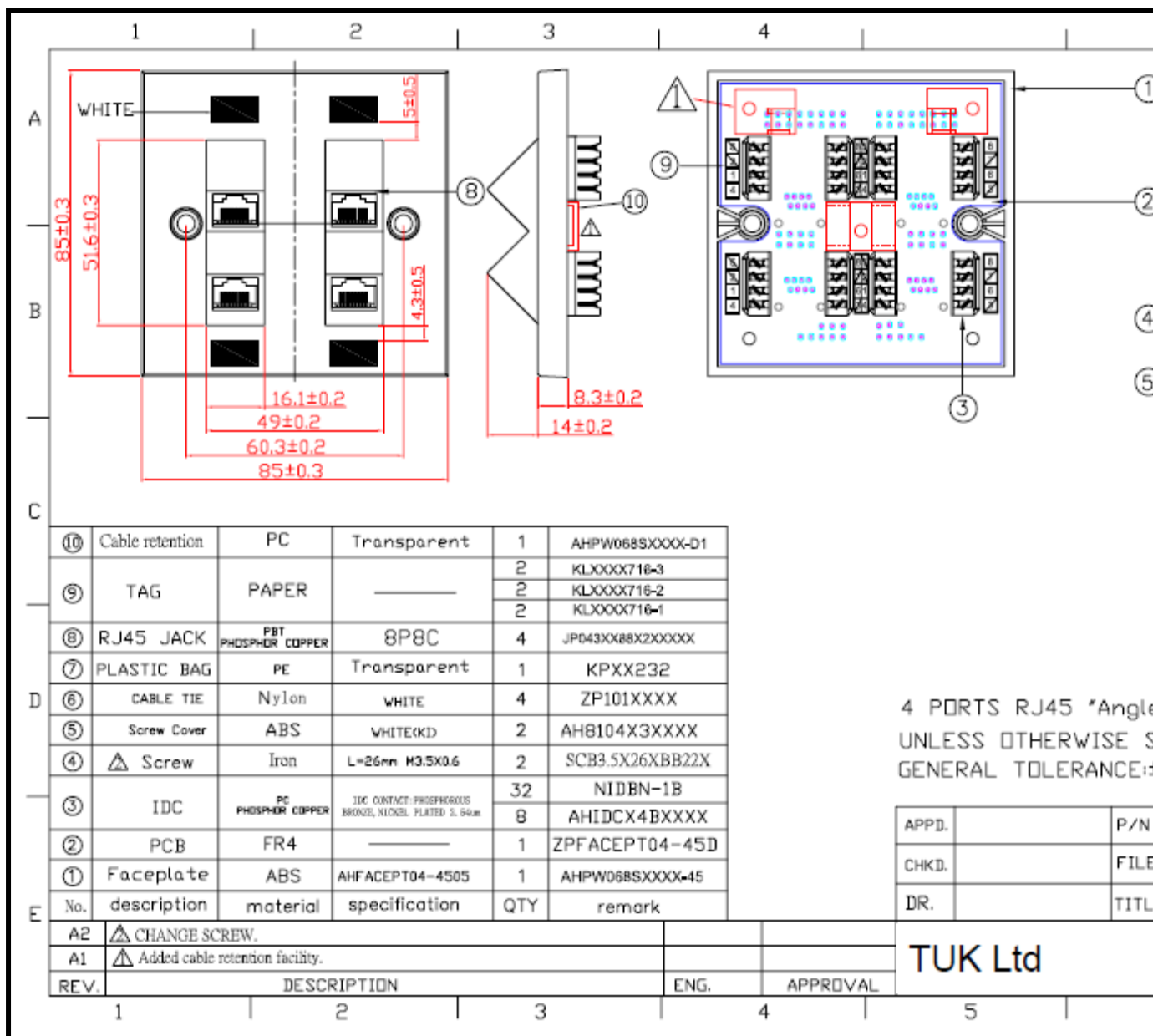
⑩	Cable retention	PC	Transparent	1	AHPW058SXXXX-D2
⑨	TAG	PAPER	—	2	KLXXX719
⑧	RJ45 JACK	PBT PHOSPHOR COPPER	8P8C	2	JP043XX8BX2XXXX
⑦	PLASTIC BAG	PE	Transparent	1	KPXX232
⑥	CABLE TIE	Nylon	WHITE	2	ZP101XXXX
⑤	Screw Cover	ABS	WHITE(KD)	2	AH8104X3XXXX
④	△ Screw	Iron	L=26mm M3.5X0.6	2	SCB3.5X26XBB22X
③	IDC	PC PHOSPHOR COPPER	IDC CONTACT: PHOSPHOROUS BRONZE, NICKEL PLATED 2.54um	16	NIDBN-1B
				4	AHIDCX4BXXXX
②	PCB	FR4	—	1	ZPFACEPT02-45D
①	Faceplate	ABS	WHITE(KD)	1	AHPW058SXXXX-45
No.	description	material	specification	QTY	remark

2 PORTS RJ45 \*Angled  
(WITH 2 SEPARATE CIR  
UNLESS OTHERWISE SP  
GENERAL TOLERANCE:±0

APPD.		P/N
CHKD.		FILE
DR.		TITL

A1	△ CHANGE SCREW.			
REV.	DESCRIPTION	ENG.	APPROVAL	
1	2	3	4	5

**TUK Ltd**



No.	description	material	specification	QTY	remark
⑩	Cable retention	PC	Transparent	1	AHPW068SXXXX-D1
⑨	TAG	PAPER	—	2	KLXXXX716-3
				2	KLXXXX716-2
				2	KLXXXX716-1
⑧	RJ45 JACK	PBT PHOSPHOR COPPER	8P8C	4	JP043XX88X2XXXXX
⑦	PLASTIC BAG	PE	Transparent	1	KPXX232
⑥	CABLE TIE	Nylon	WHITE	4	ZP101XXXX
⑤	Screw Cover	ABS	WHITE(KD)	2	AH8104X3XXXX
④	△ Screw	Iron	L=26mm M3.5X0.6	2	SCB3.5X26XBB22X
③	IDC	PC PHOSPHOR COPPER	IDC CONTACT PHOSPHOROUS BRONZE, NICKEL PLATED 2.54mm	32	NIDBN-1B
				8	AHIDCX4BXXXX
②	PCB	FR4	—	1	ZPFACEPT04-45D
①	Faceplate	ABS	AHFACEPT04-4505	1	AHPW068SXXXX-45

4 PORTS RJ45 \*Angle  
UNLESS OTHERWISE S  
GENERAL TOLERANCE:±

APPD.	P/N
CHKD.	FILE
DR.	TITL

TUK Ltd

## X-ON Electronics

Largest Supplier of Electrical and Electronic Components

*Click to view similar products for [Modular Connectors](#) / [Ethernet Connectors](#) category:*

*Click to view products by [Tuk](#) manufacturer:*

Other Similar products are found below :

[RJE231881317T](#) [MP1010RX-1000](#) [MP44RX-1000](#) [GAX-3-66](#) [GAX-8-62](#) [93606-0253](#) [GD-A-44](#) [GDCX-PA-66-50](#) [GDCX-PN-64](#) [GDCX-PN-66](#) [GDCX-PN-66-50](#) [GDLX-A-66](#) [GDLX-A-88](#) [GDLX-N-66](#) [GDLX-S-88K](#) [GDTX-S-88-50](#) [GDX-PA-1010](#) [GLX-N-1010M-BLK](#) [GLX-N-44M](#) [GLX-S-88M-BLK](#) [GMX-N-1010](#) [GMX-S-1010](#) [GMX-S-66](#) [GMX-SMT2-N-1010](#) [GMX-SMT2-N-64-50](#) [GMX-SMT2-S6-88](#) [GMX-SMT4-N-88](#) [GPX-2-64](#) [GRT1-BT1-5](#) [GSGX-N-2-88](#) [GSX-NS2-88-3.05](#) [GSX-NS2-88-3.05-50](#) [GSX-NS-88-3.05-30](#) [GSX-NS-88-3.05-50](#) [GSX-NS-88-3.68](#) [1-1775629-2](#) [GWLX-S-88-GR](#) [GWLX-S9-88-YG](#) [1300500326](#) [1300500227](#) [1300530003](#) [1300570002](#) [1324640-4](#) [RJ11FTVC2G](#) [RJ11FTVC2N](#) [RJFTVX2SA1G](#) [132764-001](#) [1400000](#) [1413176](#) [1413235](#)