

# POLAM-ELTA Sp. z o.o.

LED DIODES  
LED CONTROL LAMPS

[www.polamelta.com](http://www.polamelta.com)

e-mail: [polamelta@polamelta.com.pl](mailto:polamelta@polamelta.com.pl)

Jerozolimskie Avenue 202  
02-486 Warsaw, POLAND  
tel. (+48) 22-837-22-07  
fax (+48) 22-207-24-28



## COMPLIANCE DECLARATION NR 7/09/2007

**Producer:** POLAM-ELTA Sp. z o.o.  
Jerozolimskie Avenue 202  
02-486 Warsaw

**KRS Nr: 0000190790**  
**REGON: 001416903**

We declare with a full responsibility that **LED signal lamps E10** we manufacture: **LG , LW , LY , LR , LB , LO** (parameters in accordance with catalogue data) comply requirements imposed by:

**1. Low Voltage Directive**

LVD 2006/95/WE

**2. The standard norms (relating to the particular parts of a product):**

- PN EN 612 36:2002 Works under voltage – bipolar indexes Nn
- PN-E-90500-1:2001 Wires of polyvinyl chloride insulation 450/750
- PN-80/E-85050 miniature light bulbs of general use
- PN-EN 983:2000 miniature light bulbs

**The year of obtaining CE sign: 07**

Warszawa 10.09.2007

.....  
*Miejsce i data wystawienia*

PREZES ZARZĄDU

*Ireneusz Tonder*

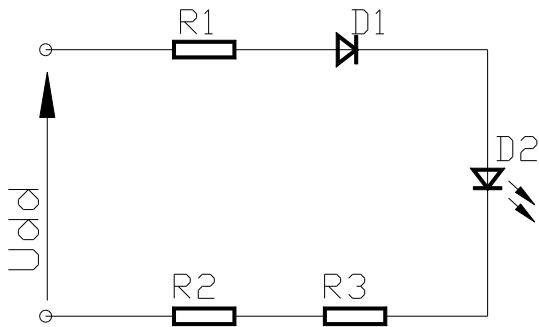
.....  
*Nazwisko, stanowisko i podpis  
osoby upoważnionej*

## 1. Product description:

The declaration is concerned about LED signal lamps produced for a number of voltage ranging 24V-230V – AC (24 V; 30 V; 48V; 60V; 110V; 220V; 230V). The lamps are designed for electric accessories use.

## 2. Technological documentation:

All the signal LED lamps are based on the following circuitry:  
**Half-wave rectifier**



For 230 V-AC voltage, power consumption is 0,8W and for 24V-AC it is 0,25 W.

# INFORMATION CARD

## E10 - 24V-AC/DC

## E10 - 230V-AC



### LED CONTROL LAMPS 24V-AC/DC

Colour of the control lamp	Parameters			
	Luminosity AC	Luminosity DC	Wave length	Power AC/DC
red	700-800 mcd	1000-1500 mcd	635 nm	0,25 / 0,5 W
green	800-1000 mcd	2200-2400 mcd	530 nm	0,25 / 0,5 W
yellow	800-1000 mcd	1100-1250 mcd	590 nm	0,25 / 0,5 W
orange	600-800 mcd	650-750 mcd	610 nm	0,25 / 0,5 W
blue	300-400 mcd	750-850 mcd	470 nm	0,25 / 0,5 W
white	2000-2500 mcd	4000-5000 mcd	-	0,25 / 0,5 W

### LED CONTROL LAMPS 230V-AC

Colour of the control lamp	Parameters		
	Luminosity	Wave length	Power
red	200-250 mcd	635 nm	0,8 W
green	400-500 mcd	530 nm	0,8 W
yellow	250-300 mcd	590 nm	0,8 W
orange	150-170 mcd	610 nm	0,8 W
blue	90-100 mcd	470 nm	0,8 W
white	1100-1600 mcd	-	0,8 W

*Date of modernization: 09-03-2012*

## X-ON Electronics

Largest Supplier of Electrical and Electronic Components

*Click to view similar products for [LED Panel Mount Indicators](#) category:*

*Click to view products by [Polam-Elta](#) manufacturer:*

Other Similar products are found below :

[607-1312-310F](#) [607-3232-140F](#) [6091M1-24V](#) [6091M5-24V](#) [6091M7-24V](#) [821-0331-503](#) [FL2870C8R](#) [FL2950WL7B](#) [FL589WL8R](#)  
[Q6P3BXXB12E](#) [H8630FBBA3](#) [MPC5ADW6.0](#) [DX1091GN](#) [NL177WL3G](#) [NL276C3G](#) [NL2950BWL3G](#) [NL2950CWL2R](#) [NL589WL2R](#)  
[NL67C3G](#) [NL67C3R](#) [2191L1-12V](#) [PB22SIOL0RG](#) [PB22SPPM41R](#) [PB22SPPM61R](#) [LE177C5B](#) [LH1048BSWL3702](#) [LH1048BWL3702](#)  
[LH382A](#) [LHM62B](#) [SSI-LXH387USBD-150](#) [SSI-LXH9ZIC40587](#) [SSP-LXS110818BA](#) [FL2950BWL7R](#) [FL2950WL7R](#) [FL2951WL8G](#)  
[FL2951WL8R](#) [FL589C7R](#) [FL67C7R](#) [FL67WL8G](#) [2191QU7-24V](#) [2191U1-12V](#) [2191U5-12V](#) [2191U5-6V](#) [2191U7-12V](#) [249-4167-3734-504F](#) [Q6P5BXXG02E](#) [3990A7](#) [5110F3-12V](#) [MPC5BCW18.0](#) [556-1237-801F](#)