

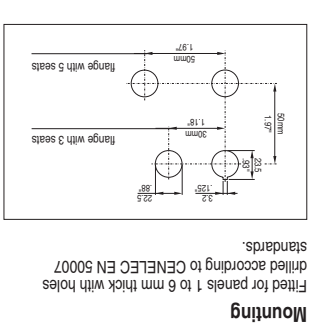


GE Industrial Systems

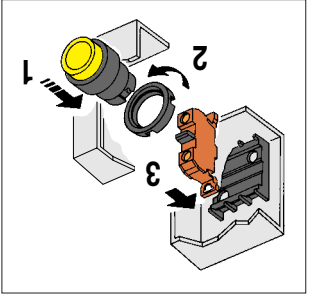
C2000™ - P9 SERIES 22 mm Pushbuttons Control and pilot units



Panel mounting



Mounting



Base mounting

Fitted for panels 1 to 6 mm thick with holes drilled according to CENELEC EN 50007 standards.

Technical data

The P9 line offers three types of operators: round in engineered thermoplastic, square in engineered thermoplastic or round in sinter chrome metal. The P9 line offers a wide variety of operators, contact blocks and power supplies for panel mounting. Furthermore a range of operators, contact blocks and power supplies are available for base mounting. The base mounting option is simple thanks to plastic enclosures fitted with a standard mounting adaptor, which allows a snap-on and prevents unwanted rotations. SERIES P9 satisfies any sophisticated industrial applications.

The standard versions are suitable for use in the following climates:
• Temperate climate cat. 23/50 (DIN 50014)
• Wet climate cat. 23/83 (DIN 50015)
• Hot wet climate cat. 40/92 (DIN 50015)
• Variable wet climate cat. FV24 (DIN 50016)

Temperature ranges
• Operation: from -25°C up to +70°C
• Storage : from -40°C up to +70°C

Degree of protection of the operators
• Class I according to IEC 536 for metal operators
• Class II (double insulation) according to IEC 536 for plastic operators.

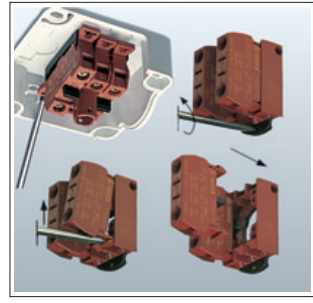
Approvals
UL (U.S.A.) - CSA (Canada) - RINA (I) - Lloyd's Register of Shipping (U.K.) - Bureau Veritas (F)
Climatic protections
The standard versions are suitable for use in the following climates:
• Temperate climate cat. 23/50 (DIN 50014)
• Wet climate cat. 23/83 (DIN 50015)
• Hot wet climate cat. 40/92 (DIN 50015)
• Variable wet climate cat. FV24 (DIN 50016)

Compliance with standards

CEI EN 60947.5.1 - UTE - BSI
NEMA - CENELEC EN 50007
UL (U.S.A.) - CSA (Canada) - RINA (I) - Lloyd's Register of Shipping (U.K.) - Bureau Veritas (F)
Impulse withstand voltage
4 kV according to EN 60947.1
Electric shock protection
• Class I according to IEC 536 for metal operators
• Class II (double insulation) according to IEC 536 for plastic operators.



Rear locking and fast mounting



Fitting and positioning

All the P9 operators are fitted with seal to ensure IP66 degree of protection.
A locking tab on the operator allows the correct positioning on panels with holes drilled according to CENELEC EN 50007 standards (with notch).
The tab also ensures panel stability and prevents unwanted rotations.
The tab can be removed with a screwdriver for applications in holes without notch.

Shock resistance
(according to MIL 202 B method 202 A)
1/2 sinusoid 11 ms:
No damage or disassembling at 100 G for all devices (except for the illuminated operators with transformer 38 G).
Vibration resistance
(according to IEC 68-2-6)
16 G with frequency range from 40 to 500 Hz and maximum shifting 0.75 mm. (peak-to-peak).
Rated insulation voltage
690V according to EN 60947.1

Degree of protection of the terminals

IP2X according to CENELEC EN 60529
(according to MIL 202 B method 202 A)
Short-circuit protection
IEC 269.1 and 269.3.
Performance of the contacts
• Slow action
• Self-cleaning sliding
• NC "positive opening"
• Double movable contact
• Four switching points
• Double break



Safety and reliability

Mounting between panel and operator is accomplished by means of a patented snap-on flange which ensures a fast fitting.
For base mounting, the fitting is done directly on the adaptor inside the enclosures base.
Each single block can be mounted or removed individually.
In panel mounting, it is also possible to install or remove the snap-on mounting flange with the contact block group.
Blocks and/or flange can be disassembled by a standard screwdriver, to simplify operations.

Electrical life
Alternate current 50/60 Hz cat. AC15
Electrical resistance of the contact
≤ 25 mΩ according to IEC 255, cat. 3
Identification of the terminals
According CENELEC EN 50013
Electrical performances
Rated thermal current Ith = 10A
Voltage Ue (V) 24 48 60 110 220 300
Current Ie (A) 10 10 10 6 3 2 1.5 1.2

Back mounting procedure

As an option, an assembly wrench is available. P9 operators are packed in a patented snap-on flange which ensures a fast fitting.
The P9 contact blocks are designed to ensure maximum reliability in every condition and to a high degree of protection.
• high control pressure.
• silver contacts, properly shaped
• high efficiency self-cleaning operation
• four contact points
• high control pressure.

Common accessories

Bulbs BA9s	Flament type	Wh
BA9S6L	6	6
BA9S24L	24	48
BA9S48L	48	110
BA9S6L	6	18.00
BA9S24L	24	18.00
BA9S48L	48	18.00
BA9S10L	10	18.00

Tools

Locking ring wrench	PA9CAF	7.00
Bulb extractor	08ESL	4.00
Extractor for caps and lenses	P9ASBG	7.00

Plugs

Round	PA9HPR	5.00
Square 30 x 30 mm	PA9HPS	5.00
Rectangular 30 x 50 mm	PA9HPS	5.00

Round plates

Emergency Stop 080XTGR02	2.00	
Standard 30 x 50 mm	PA9RTS	1.00
Supplied with neutral insert	PA9RTS	1.00
Engraved on both sides	PA9RTS	2.00

Push-button stations

Empty versions in thermoplastic IP66	Light grey coloured Panel or base mounted	Knockouts conduit entry
080SP1	30.00	1.00
080SP1M	35.00	1.00
080SP2	35.00	1.00
080SP2M	42.00	1.00
080SP3	42.00	1.00
080SP4	43.00	1.00
080SP4M	51.00	1.00
080SP6	53.00	1.00
080SP8	63.00	1.00
080SP12	83.00	1.00
080SP18	113.00	1.00
080SP24	143.00	1.00

Empty versions in aluminium alloy

Earth terminal clamp	PA9EMT	1.00
Grey coloured RAL 7012 - Panel mounting	PA9ELN042	1.50
No. of holes	PA9ELN039	1.50
1	I-0-II	1.50
2	II	1.50
3	III	1.50
4	IV	1.50
6	0	1.50
8	I	1.50
12	II	1.50
18	III	1.50
24	IV	1.50

Accessories

Write-on plates	PA9ELN	0.50
Standard 30 x 50 mm	PA9ELN	0.50
Supplied with neutral insert	PA9ELN	0.50
Engraved on both sides	PA9ELN	0.50

Insert holders

Standard 30 x 50 mm	PA9RTS	1.00
Supplied with neutral insert	PA9RTS	1.00
Engraved on both sides	PA9RTS	2.00

Operators

Colour Diagram Namepl.	Colour Diagram Namepl.	Colour Diagram Namepl.
P9EPA01Y02	P9EPA01Y03	P9EPA01Y04
P9EPA01Y05	P9EPA01Y06	P9EPA01Y07

Operators

Colour Diagram Namepl.	Colour Diagram Namepl.	Colour Diagram Namepl.
P9EPA02Y01	P9EPA02Y02	P9EPA02Y03

Two units

Colour Diagram Namepl.	Colour Diagram Namepl.	Colour Diagram Namepl.
P9EPA03Y01	P9EPA03Y02	P9EPA03Y03
P9EPA03Y04	P9EPA03Y05	P9EPA03Y06

Three units

Colour Diagram Namepl.	Colour Diagram Namepl.	Colour Diagram Namepl.
P9EPA03Y01	P9EPA03Y02	P9EPA03Y03
P9EPA03Y04	P9EPA03Y05	P9EPA03Y06

SERIES P9 - Push-button stations

General Electric Company
41 Woodard Avenue
Plainville, CT 06062
www.GEindustrial.com

GE Industrial Systems

GE logo

GE logo

X-ON Electronics

Largest Supplier of Electrical and Electronic Components

Click to view similar products for [ge critical power manufacturer](#):

Other Similar products are found below :

[CAR0812FPB-Z01A](#) [CP2725AC48TEZ-FB](#) [ESTW010A0A41-HZ](#) [APTS006A0X4-SRZ](#) [ATH030A0X3-SRPHZ](#) [EHW007A0B41Z](#)
[GP100H3R48TEZ](#) [UPS12438](#) [UPS12434](#) [UPS25512](#) [UPS23916EBM](#) [UPSITSNMP](#) [UPS1024747](#) [GFL631T-3](#) [J85480S1L20Z](#)
[DIGITAL_POL_EVAL_KIT](#) [SC001A2B91-SRZ](#) [UPS1500ITSIT](#) [EP1000-UTEZ](#) [J2014001L402](#) [EP3000AC48INZ](#) [120-601](#)
[QBVW033A0B41-HZ](#) [CP3500AC54TEZ](#) [CP3000AC54TEZ](#) [UPS1024746](#) [CCR0512FPXXXZ01A](#) [CLP0112FPXXXZ01A](#)
[CCR0512FPKITZ01A](#) [500T058X117-122](#) [CAR1248FPBCXZ01A](#) [EQW020A0F1Z](#) [CAR1248FPBXXZ01A](#) [CAR2024FPBXXZ01A](#)
[J2014004L001-CC SHELF](#) [19SHT-162](#) [KNW020A0F641-88Z](#) [CLP0224FPXXXZ01A](#) [SSTW005A0F41-SRZ](#) [QSVW050A0B41-HZ](#)
[EBDW020A0B641-HZ](#) [AXH005A0XZ](#) [ATH006A0XZ](#) [TJT120A0X3-SZ](#) [ESTW004A2C41Z](#) [APTS030A0X3-SRPHZ](#) [A28F5610S](#)
[PJT014A0X3-SRZ](#) [465-069](#) [19SHT-102](#)