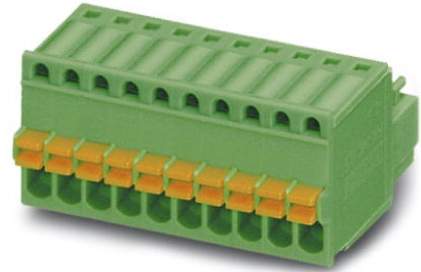


## FK-MC 0,5/10-ST-2,5

Order No.: 1881406

The figure shows a 10-position version of the product

<http://eshop.phoenixcontact.net/phoenix/treeViewClick.do?UID=1881406>

Plug component, Nominal current: 4 A, Nom. voltage: 100 V, Pitch:  
2.5 mm, Number of positions: 10, Connection type: Spring-cage conn.,  
Color: green

### Commercial data

|                          |                    |
|--------------------------|--------------------|
| EAN                      | 4017918156657      |
| Pack                     | 50 pcs.            |
| Customs tariff           | 85366990           |
| Weight/Piece             | 0.006216 KG        |
| Catalog page information | Page 136 (CC-2009) |

### Product notes

WEEE/RoHS-compliant since:  
01/01/2003



<http://www.download.phoenixcontact.com>  
Please note that the data given here has been taken from the online catalog. For comprehensive information and data, please refer to the user documentation. The General Terms and Conditions of Use apply to Internet downloads.

### Technical data

#### Dimensions / positions

|                     |         |
|---------------------|---------|
| Pitch               | 2.5 mm  |
| Dimension a         | 22.5 mm |
| Number of positions | 10      |

**Technical data**

|                                    |  |
|------------------------------------|--|
| Insulating material group          | I  |
| Rated surge voltage (III/3)        | 1.5 kV   |
| Rated surge voltage (III/2)        | 2.5 kV   |
| Rated surge voltage (II/2)         | 2.5 kV   |
| Rated voltage (III/2)              | 160 V  |
| Rated voltage (II/2)               | 320 V  |
| Connection in acc. with standard   | EN-VDE   |
| Nominal current $I_N$              | 4 A  |
| Nominal voltage $U_N$              | 100 V  |
| Nominal cross section              | 0.5 mm <sup>2</sup>                                    |
| Maximum load current               | 4 A (with 0.5 mm <sup>2</sup> conductor cross section) |
| Insulating material                | PA   |
| Inflammability class acc. to UL 94 | V0   |
| Stripping length                   | 8 mm   |

**Connection data**

|  |                      |
|--|----------------------|
| Conductor cross section solid min.   | 0.14 mm <sup>2</sup> |
| Conductor cross section solid max.   | 0.5 mm <sup>2</sup>  |
| Conductor cross section stranded min.                                      | 0.14 mm <sup>2</sup> |
| Conductor cross section stranded max.                                      | 0.5 mm <sup>2</sup>  |
| Conductor cross section stranded, with ferrule without plastic sleeve min. | 0.25 mm <sup>2</sup> |
| Conductor cross section stranded, with ferrule without plastic sleeve max. | 0.5 mm <sup>2</sup>  |
| Conductor cross section AWG/kcmil min.                                     | 26                   |
| Conductor cross section AWG/kcmil max                                      | 20                   |

**Certificates / Approvals**



Certification

CB, CUL, GOST, UL, VDE-PZI

**CUL**

|                       |       |
|-----------------------|-------|
| Nominal voltage $U_N$ | 125 V |
| Nominal current $I_N$ | 4 A   |

|                       |       |
|-----------------------|-------|
| AWG/kcmil             | 28-20 |
| <b>UL</b>             |       |
| Nominal voltage $U_N$ | 125 V |
| Nominal current $I_N$ | 4 A   |
| AWG/kcmil             | 28-20 |

#### Accessories

| Item           | Designation              | Description  |
|----------------|--------------------------|--|
| <b>Marking</b> |                          |  |
| 0804853        | SK 2,54/2,8:FORTL.ZAHLEN | Marker card, printed horizontally, self-adhesive, 10-section marker strip, 14 identical decades marked 1-10, 11-20 etc. up to 91-100, sufficient for 140 terminal blocks |

#### Tools

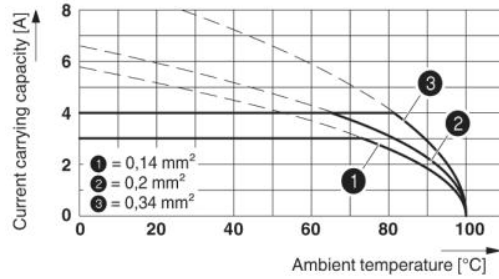
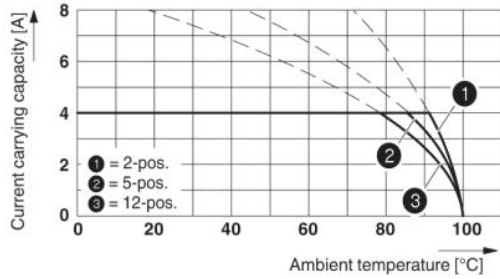
| Item    | Designation | Description   |
|---------|-------------|---|
| 1205202 | SZS 0,4X2,0 | Screwdriver, bladed, matches all screw terminal blocks up to 1.5 mm <sup>2</sup> connection cross section, blade width: 2.5 mm, without approvals |

#### Additional products

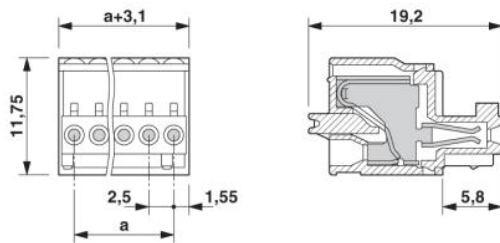
| Item           | Designation        | Description   |
|----------------|--------------------|---|
| <b>General</b> |                    |   |
| 1881529        | MC 0,5/10-G-2,5    | Header, Nominal current: 4 A, Nom. voltage: 80 V, Pitch: 2.5 mm, Number of positions: 10, Color: green, Assembly: Soldering |
| 1894888        | MCD 0,5/10-G1-2,5  | Header, Nominal current: 4 A, Nom. voltage: 80 V, Pitch: 2.5 mm, Number of positions: 10, Color: green, Assembly: Soldering |
| 1894998        | MCDV 0,5/10-G1-2,5 | Header, Nominal current: 4 A, Nom. voltage: 80 V, Pitch: 2.5 mm, Number of positions: 10, Color: green, Assembly: Soldering |
| 1881639        | MCV 0,5/10-G-2,5   | Header, Nominal current: 4 A, Nom. voltage: 80 V, Pitch: 2.5 mm, Number of positions: 10, Color: green, Assembly: Soldering |

**Diagrams/Drawings**

Diagram



Dimensioned drawing



**Address**

PHOENIX CONTACT GmbH & Co. KG  
Flachsmarktstr. 8  
32825 Blomberg, Germany  
Phone +49 5235 3 00  
Fax +49 5235 3 41200  
<http://www.phoenixcontact.com>



© 2010 Phoenix Contact  
Technical modifications reserved;

## X-ON Electronics

Largest Supplier of Electrical and Electronic Components

*Click to view similar products for [phoenix contact manufacturer](#):*

Other Similar products are found below :

[1203259](#) [3240366](#) [1893300](#) [2800744](#) [2867076](#) [3006564](#) [2800741](#) [5146480](#) [1582539](#) [1623633](#) [1507793](#) [3025587](#) [3069708](#) [1582223](#)  
[1431461](#) [1586976](#) [0311647](#) [1460160](#) [1771338](#) [3048387](#) [2814605](#) [0309086](#) [1513716](#) [3035684](#) [5451417](#) [0202219](#) [1647747](#) [1730667](#)  
[1709267](#) [5449018](#) [0311634](#) [1730696](#) [3034057](#) [0311579](#) [1730683](#) [0719032](#) [5449843](#) [3240098](#) [0311566](#) [0201391](#) [CRIMPFOX 16 S](#)  
[CRIMPSET 25](#) [7001438](#) [ETD-BL-1T-F-300S](#) [MCR-1CLP-I-I-00](#) [MCR-4CLP-I-I-00](#) [MCR-DAC 8-I- 4-BUS](#) [FL EPA WMS](#) [FLK 50/EZ-DR/](#)  
[400/KONFEK/S](#) [FLS PB M12 DO 8 M12-2A](#)