

sheet	revision	sheet	index
E	E	3	4
E	E	2	3
E	E	1	2
E	E	1	1

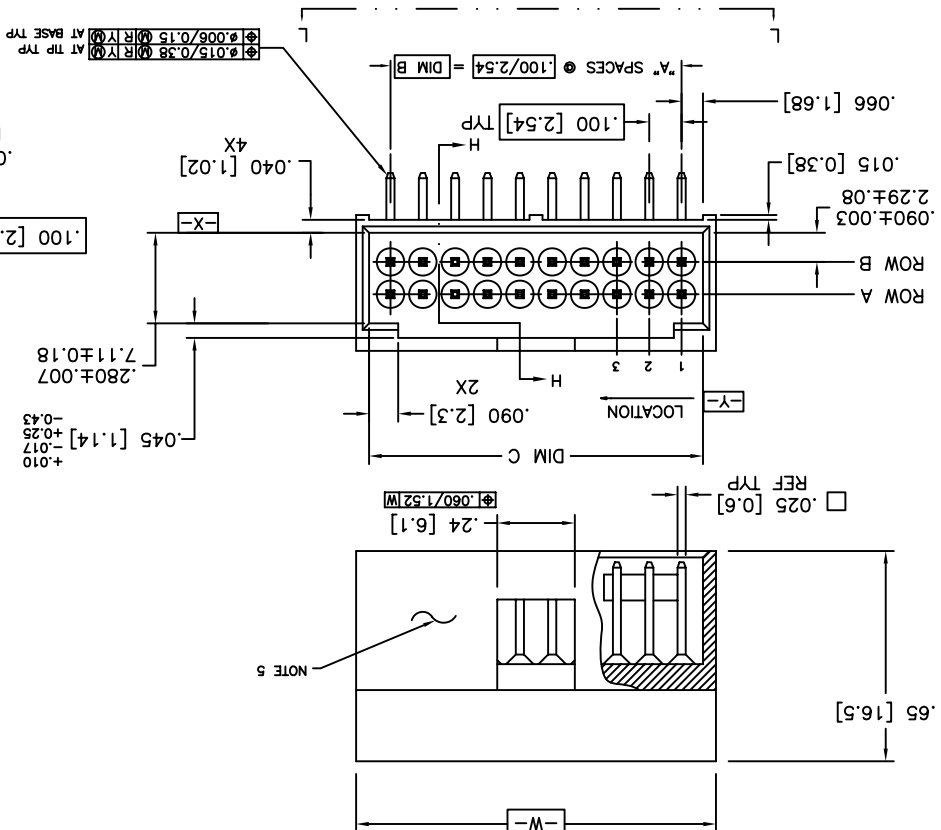
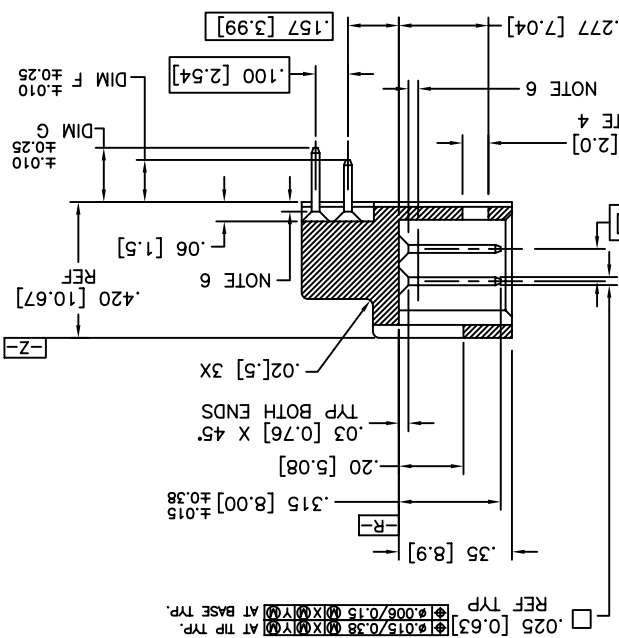
appd	H. SUNDY	9/16/05	9/16/05
chr	H. SUNDY	9/16/05	
engr	H. SUNDY	9/16/05	
dr	D. INGRAM	9/16/05	

E	N06-0148	RV	2006-07-14	0' ±.2'	XXXX +.0020/XXX+.051	scale 1:1
D	N06-0016	DM	01/23/06	angles	XXX +.005/XXX.8	INCH/MM
C	V05-0719	DM	9/16/05		XX +.01/XX.3	

lfr	ecn no	dr	date	tolerance unless otherwise specified	projection	product family	HEADERS
				ASME Y14.5			

mat'l code	surface	tolerance	projection	product family	HEADERS	title	R/A HEADER	FOR ROUND WIRE RECEPTACLE	dwg no	sheet 1 of 4 size	A4	type	CUSTOMER Drawing	

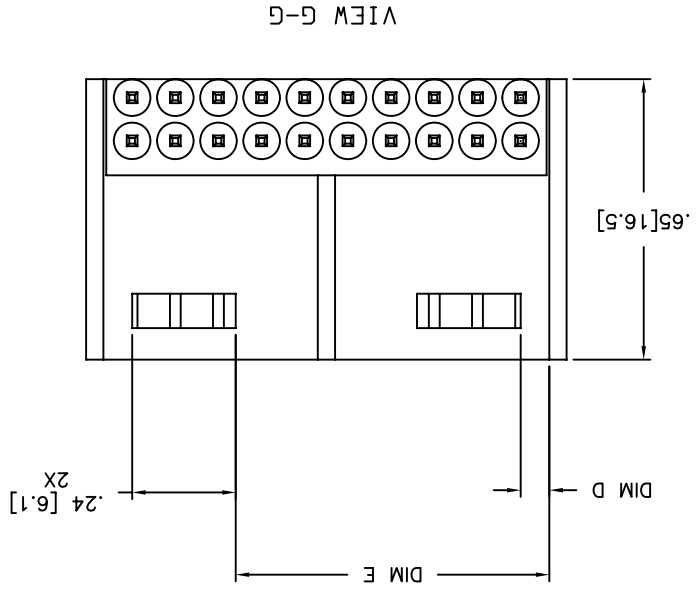
SECTION H-H



PRODUCT NUMBER
SEE TABLE



PRODUCT NO. SEE TABLE



- NOTES:
1. TERMINAL MATERIAL: 3/4 HARD PHOS BRONZE ALLOY - UNS-C51000.
 2. PLATING: 15µ"/0.38µ P/N! OVER 50µ"/1.27µ N!
 3. MOLDING MATERIAL: GLASS FILLED POLYESTER, FLAME RETARDANT PER UL 94V-0, COLOR - BLACK.
 - THIS PRODUCT WILL WITHSTAND 260°C PEAK TEMPERATURE FOR 10 SECONDS IN A WAVE SOLDER PROCESS.
 - ④ .02/.5 MAX FLASH AROUND ALL WINDOWS.
 - ⑤ COMPANY LOGO MOLDED ON DATUM SURFACE -Z-, APPROXIMATELY AS SHOWN.
 - ⑥ .03/.8 MAX FLASH PERMISSIBLE ON PINS, BOTH ENDS.
 7. PALLADIUM PLATED PRODUCT HAS GOLD FLASH.
 8. OTHER PLATINGS ARE AVAILABLE ON 68667, 68668, AND 68670.
 - ⑨ ADD SUFFIX LF TO END OF PART NUMBER FOR LEAD FREE OPTION. EXAMPLE: 68669-001LF
 10. THIS PRODUCT MEETS EUROPEAN UNION DIRECTIVES AND OTHER COUNTRY REGULATIONS AS DESCRIBED IN GS-22-008.

mat'l code	surface	tolerance	projection	product family	HEADERS
	ASME Y14.5	ASME Y14.5			
lit	ecn no	dr	date	tolerances unless otherwise specified	title
E				angles	R/A HEADER
				xxx ±.01/xxx±3	FOR ROUND WIRE RECEPTACLE
				xxx ±.005/xxx±.9	
				xxx ±.020/xxx±.051	
				dr	scale 1:1
				D/INGRAM	dwg no
				9/16/05	68669
				eng'r	size
				s.SUNDY	sheet 2 of
				9/16/05	A4
				chr	type
				H.SUNDY	CUSTOMER Drawing
				9/16/05	
				apptd	
				H.SUNDY	
				9/16/05	
sheet	revision	sheet	index		

PRODUCT NO.	NO OF POS	NO OF POS	NO OF POS	NO OF POS	DIM A	DIM B	DIM C	DIM D	DIM E	DIM F	DIM G	LF OPTION
68669-001	6	6	2	2	.200/5.08	.332/8.43	.066/1.68	---	---	.130/3.30	.130/3.30	NOTE 9
-002	8	8	3	3	.300/7.62	.432/10.97	.066/1.68	---	---	---	---	---
-003	10	10	4	4	.400/10.16	.532/13.52	.166/4.22	---	---	---	---	---
-004	12	12	5	5	.500/12.70	.632/16.05	.166/4.22	---	---	---	---	---
-005	14	14	6	6	.600/15.24	.732/18.59	.266/6.76	---	---	---	---	---
-006	16	16	7	7	.700/17.78	.872/21.13	.226/6.76	---	---	---	---	---
-007	18	18	8	8	.800/20.32	.932/23.67	.366/9.30	---	---	---	---	---
-008	20	20	9	9	.900/22.86	1.032/26.21	.066/1.68	---	---	---	---	---
-009	22	22	10	10	1.000/25.40	1.132/28.75	---	---	---	---	---	---
-010	24	24	11	11	1.100/27.94	1.232/31.29	---	---	---	---	---	---
-011	26	26	12	12	1.200/30.48	1.332/33.83	---	---	---	---	---	---
-012	28	28	13	13	1.300/33.02	1.432/36.37	---	---	---	---	---	---
-013	30	30	14	14	1.400/35.56	1.532/38.91	---	---	---	---	---	---
-014	32	32	15	15	1.500/38.10	1.632/41.45	---	---	---	---	---	---
-015	34	34	16	16	1.600/40.64	1.732/43.99	---	---	---	---	---	---
-016	36	36	17	17	1.700/43.18	1.832/46.53	---	---	---	---	---	---
-017	38	38	18	18	1.800/45.72	1.932/49.07	---	---	---	---	---	---
-018	40	40	19	19	1.900/48.26	2.032/51.61	---	---	---	---	---	---
-019	42	42	20	20	2.000/50.80	2.132/54.15	---	---	---	---	---	---
-020	44	44	21	21	2.100/53.34	2.232/56.69	---	---	---	---	---	---
-021	46	46	22	22	2.200/55.88	2.332/59.23	---	---	---	---	---	---
-022	48	48	23	23	2.300/58.42	2.432/61.77	---	---	---	---	---	---
-023	50	50	24	24	2.400/60.96	2.532/64.31	---	---	---	---	---	---
-024	52	52	25	25	2.500/63.50	2.632/66.85	---	---	---	---	---	---
-025	54	54	26	26	2.600/66.04	2.732/69.39	---	---	---	---	---	---
-026	56	56	27	27	2.700/68.58	2.832/71.93	---	---	---	---	---	---
-027	58	58	28	28	2.800/71.12	2.932/74.47	---	---	---	---	---	---
-028	60	60	29	29	2.900/73.66	3.032/77.01	---	---	---	---	---	---
-029	62	62	30	30	3.000/76.20	3.132/79.55	---	---	---	---	---	---
-030	64	64	31	31	3.100/78.74	3.232/82.09	---	---	---	---	---	---
-031	66	66	32	32	3.200/81.28	3.332/84.63	---	---	---	---	---	---
-032	68	68	33	33	3.300/83.82	3.432/87.17	---	---	---	---	---	---
-033	70	70	34	34	3.400/86.36	3.532/89.71	---	---	---	---	---	---
-034	72	72	35	35	3.500/88.90	3.632/92.25	---	---	---	---	---	---
-035	6	6	2	2	.200/5.08	.332/8.43	---	---	---	---	---	---
68669-036	8	8	3	3	.300/7.62	.432/10.97	.066/1.68	---	---	.200/5.08	.200/5.08	NOTE 9

mat'l code	surface	tolerance	ASME Y14.5	projection	product family	HEADERS
lit	ecn no	dr	date	tolerances unless otherwise specified	title	R/A HEADER
angles	±.2	xxx +.005/xxx-B	xxx +.002/xxx+.051	scale 1:1	dwg no	68669
dr	DINGRAM	9/16/05	9/16/05	type	sheet 3 of	size
appd	H.SUNDY	9/16/05	9/16/05	customer	DRAWING	
chr	H.SUNDY	9/16/05	9/16/05	FCI		
engr	S.SUNDY	9/16/05	9/16/05	68669		
sheet	revision	sheet	index	sheet		

PDMS Released

PDS: Rev: E

3

2

1

4

B

B

A

A



PRODUCT NO.	NO OF POS	NO OF POSITIONS	A SPACES	DIM B	DIM C	DIM D	DIM E	DIM F	DIM G	LF OPTION
68669-037	10	10	---	.400/10.16	.532/13.52	.166/4.22	---	.200/5.08	.200/5.08	NOTE 9
-038	12	12	---	.500/12.70	.632/16.05	.166/4.22	---	---	---	---
-039	14	14	---	.600/15.24	.732/18.59	.266/6.76	---	---	---	---
-040	16	16	---	.700/17.78	.832/21.13	.266/6.76	---	---	---	---
-041	18	18	---	.800/20.32	.932/23.67	.366/9.30	---	---	---	---
-042	20	20	---	.900/22.86	1.032/26.21	.066/1.68	---	---	---	---
-043	22	22	---	1.000/25.40	1.132/28.75	---	---	---	---	---
-044	24	24	---	1.100/27.94	1.232/31.29	---	---	---	---	---
-045	26	26	---	1.200/30.48	1.332/33.83	---	---	---	---	---
-046	28	28	---	1.300/33.02	1.432/36.37	---	---	---	---	---
-047	30	30	---	1.400/35.56	1.532/38.91	---	---	---	---	---
-048	32	32	---	1.500/38.10	1.632/41.45	---	---	---	---	---
-049	34	34	---	1.600/40.64	1.732/43.99	---	---	---	---	---
-050	36	36	---	1.700/43.18	1.832/46.53	---	---	---	---	---
-051	38	38	---	1.800/45.72	1.932/49.07	---	---	---	---	---
-052	40	40	---	1.900/48.26	2.032/51.61	---	---	---	---	---
-053	42	42	---	2.000/50.80	2.132/54.15	---	---	---	---	---
-054	44	44	---	2.100/53.34	2.232/56.69	---	---	---	---	---
-055	46	46	---	2.200/55.88	2.332/59.23	---	---	---	---	---
-056	48	48	---	2.300/58.42	2.432/61.77	---	---	---	---	---
-057	50	50	---	2.400/60.96	2.532/64.31	---	---	---	---	---
-058	52	52	---	2.500/63.50	2.632/66.85	---	---	---	---	---
-059	54	54	---	2.600/66.04	2.732/69.39	---	---	---	---	---
-060	56	56	---	2.700/68.58	2.832/71.93	---	---	---	---	---
-061	58	58	---	2.800/71.12	2.932/74.47	---	---	---	---	---
-062	60	60	---	2.900/73.66	3.032/77.01	---	---	---	---	---
-063	62	62	---	3.000/76.20	3.132/79.55	---	---	---	---	---
-064	64	64	---	3.100/78.74	3.232/82.09	---	---	---	---	---
-065	66	66	---	3.200/81.28	3.332/84.63	---	---	---	---	---
-066	68	68	---	3.300/83.82	3.432/87.17	---	---	---	---	---
-067	70	70	---	3.400/86.36	3.532/89.71	---	---	---	---	---
-068	72	72	---	3.500/88.90	3.632/92.25	---	---	---	---	---
-069	8	8	A-2,3	.300/7.62	.432/10.97	---	---	.130/3.30	.130/3.30	---
-070	50	50	---	2.400/60.96	2.532/64.31	---	---	.235/5.97	.235/5.97	---
-071	8	8	A-2	.300/7.62	.432/10.97	.066/1.68	---	.130/3.30	.130/3.30	NOTE 9

mat'l code	surface	tolerance	ASME Y14.5	projection	product family	HEADERS
lit	ecn no	dr	date	tolerances unless otherwise specified	title	R/A HEADER
angles	±.2	xxxx +.005/xxx-B	xxxx +.002/xxx+.051	scale 1:1	dwg no	68669
dr	D/INGRAM	9/16/05	9/16/05	sheet 4 of size	type	CUSTOMER Drawing
engr	S.SUNDY	9/16/05	9/16/05	FCI logo		
chr	H.SUNDY	9/16/05	9/16/05	sheet revision		
appd	H.SUNDY	9/16/05	9/16/05	index sheet		

PDS: Rev: E

FCI logo

FORM RELEASED

Printed: Nov 06, 2006



X-ON Electronics

Largest Supplier of Electrical and Electronic Components

Click to view similar products for [Headers & Wire Housings](#) category:

Click to view products by [FCT Electronics](#) manufacturer:

Other Similar products are found below :

[95000-104TRLF](#) [10135584-644402LF](#) [DF62W-EP2022PCA](#) [95000-106TRLF](#) [DF62W-2022SCA](#) [DF62W-EP2022PC](#) [2203348](#) [DF62W-2022SC](#) [1084018](#) [1029039](#) [1084017](#) [802-10-012-10-002000](#) [1112640](#) [1112639](#) [891-007-9SS-BST1T](#) [000-34000](#) [0008550134](#) [0009482033](#) [0009507031](#) [57102-F02-18ULF](#) [57102-S06-03LF](#) [57202-S52-04LF](#) [PCN6-15S-2.5E](#) [0039019024](#) [58102-G61-06LF](#) [582553-1](#) [0009485154](#) [0009508121](#) [0022285053](#) [0050291907](#) [018731A](#) [LY20-4P-DT1-P1E-BR](#) [02.125.8002.8](#) [60101931](#) [60598-1 \(Cut Strip\)](#) [M1625-3R/100](#) [61062-3](#) [61082-181009](#) [CSU011177004](#) [636-1427](#) [638009-1](#) [641938-9](#) [641991-4](#) [644168-1](#) [644827-2](#) [647662-1](#) [65039-019ELF](#) [65692-001LF](#) [65781-018](#) [65781-047](#)