



www.bradyid.com/bmp21

Meet The Newest Member Of Your Crew.

BMP™21 LABEL PRINTER

Simple to operate and quick to print, the BMP™21 label printer is the economical, must-have labeling tool for voice/data comm, electrical and general industrial crews. With this thermal transfer printer, you can create your labels just once - knowing they'll stay stuck and stay legible for the years ahead.

"I would gladly put this labeler in my travel tool kit. Combined with a few different media cartridges it would cover nearly any telecom and network labeling I conceivably encounter in the field"

Ty King,
Forest Oil Corporation



Faster, More Efficient Labeling

- Magnet and pole/wrist-strap for one-handed operation
- Automated serialized printing
- Built-in symbols
- Industrial-strength dual cutter that holds labels until you need them



Durable, Made-to-Last Labels

- Wide array of label types and sizes
- Labels withstand extreme temperatures, irregular surfaces, and chemicals
- Vinyl material lasts up to 5 years in extreme outdoor conditions



All-in-One Industrial Labeling Tool

- Crystal clear thermal transfer printing
- On demand labels for organizing & identifying

Learn more and view our demo video:
www.bradyid.com/bmp21

BMP™ 21 LABEL PRINTER

Part Numbers



SELF-LAMINATING VINYL*



PROPERTIES:

- Self Extinguishing
- Excellent water & oil resistance
- Excellent abrasion resistance

14' Long	.75"	1"	1.25"	1.5"
Black on White	M21-750-427*	M21-1000-427*	M21-1250-427*	M21-1500-427*

PERMASLEEVE™ WIRE MARKER SLEEVES

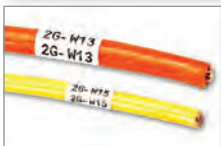


PROPERTIES:

- Heat-Shrinkable
- Self Extinguishing
- Meets MIL-M-81531; MIL-STD-202F; method 215 and UL 224

7' Long	.125"	.187"	.250"	.375"
Black on White	M21-125-C-342*	M21-187-C-342	M21-250-C-342	M21-375-C-342

NYLON CLOTH

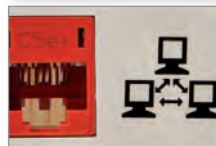


IDEAL FOR:

- Wire & Cable
- Patch Panels
- Terminal Blocks
- Face Plates

16' Long	.375"	.5"	.75"
Black on White	M21-375-499	M21-500-499	M21-750-499
Terminal Block	M21-375-499-TB	M21-500-499-TB	

POLYESTER



IDEAL FOR:

- Components
- Instruments
- Racks & Bins

21' Long	.375"	.5"	.75"
Black on White	M21-375-423	M21-500-423	M21-750-423
Black on Clear	M21-375-430	M21-500-430	M21-750-430

INDOOR/OUTDOOR VINYL FILM



PROPERTIES:

- Adheres to irregular, curved or rough surfaces
- Stands up to grease, oil and most industrial chemicals
- 5 year average outdoor durability in temperatures from -40°F to 180°F

IDEAL FOR:

- Pipes
- Round Surfaces
- Tools
- Containers
- Bins
- Components
- Instruments
- Panels

21' Long	.375"	.5"	.75"
Black on White	M21-375-580-WT	M21-500-580-WT	M21-750-580-WT
Black on Yellow	M21-375-580-YL	M21-500-580-YL	M21-750-580-YL
Black on Orange	M21-375-580-OR	M21-500-580-OR	M21-750-580-OR
White on Red	M21-375-580-RD	M21-500-580-RD	M21-750-580-RD
White on Blue	M21-375-580-BL	M21-500-580-BL	M21-750-580-BL
White on Green	M21-375-580-GN	M21-500-580-GN	M21-750-580-GN

! Cross Compatible

BMP™21 and ID Pal™ label cartridges can be used in either the BMP™21 Label Printer or the ID Pal™ Printer except for those denoted by an asterisk(*).

PRINTER & ACCESSORIES



Part Number	Description
BMP21	BMP21 Label Printer
BMP21-TOOL	Multi-Functional Tool (magnet, flashlight, pole-strap, stand)
BMP21-MAGNET	Magnet Only Accessory
BMP21-HC	Hard Carrying Case for BMP21 Printer
BMP21-AC	AC Adapter for BMP21 Printer

Brady Worldwide, Inc.
6555 W. Good Hope Road
Milwaukee, WI 53223
1-888-272-3946
www.bradyid.com

Brady Canada
355 Apple Creek Blvd.
Markham, ON L3R 9X7
1-800-263-6179
www.bradycanada.com

Learn more and view our demo video:
www.bradyid.com/bmp21

X-ON Electronics

Largest Supplier of Electrical and Electronic Components

Click to view similar products for [Desktop AC Adapters](#) category:

Click to view products by [Brady](#) manufacturer:

Other Similar products are found below :

[YS50-1903150](#) [ADP-40KD BBBM](#) [DTA27-3X-W-5](#) [212A2136](#) [ADP485-01](#) [SWA-1202](#) [SWA-1501](#) [212A2220](#) [212A2220-02](#) [212A2220-04](#)
[FWE030015A-10A](#) [TRH100A135-02E12-Level-VI](#) [TRH100A180-11E13-Level-VI](#) [TRH100A240-01E13-Level-VI](#) [TRH100A280-01E13-](#)
[Level-VI](#) [TRH100A280-11E13-Level-VI](#) [TRH50A120-02E01-Level-VI](#) [TRH50A120-12E01-Level-VI](#) [TRH50A120-40E01-Level-VI](#)
[TRH50A150-12E12-Level-VI](#) [TRH50A180-11E03-Level-VI](#) [TRH50A240-02E03-Level-VI](#) [TRH70A120-11E01-Level-VI](#) [TRH70A150-](#)
[12E02-Level-VI](#) [TRH70A240-11E03-Level-VI](#) [416FG41017](#) [DTA27-0512FWX-W3](#) [TRH100A120-02E12-Level-VI](#) [TRH100A150-11E12-](#)
[Level-VI](#) [TRH100A180-02E13-Level-VI](#) [TRH100A240-02E13-Level-VI](#) [TRH100A240-36E13-Level-VI](#) [TRH100A280-12E13-Level-VI](#)
[TRH100A480-11E13-Level-VI](#) [TRH100A480-12E13-Level-VI](#) [TRH50A120-11E01-Level-VI](#) [TRH50A120-49E01-Level-VI](#) [TRH50A150-](#)
[11E02-Level-VI](#) [TRH50A150-12E02-Level-VI](#) [TRH70A120-01E01-Level-VI](#) [TRH70A480-02E03-Level-VI](#) [KR8-PS01](#) [1894875](#)
[FWE030012A-10A](#) [FWE050024B-10A](#) [820A4080G](#) [825A0052-03](#) [825A0057-03](#) [SWA-1704W](#) [AD5012N2LM-\(401\)](#)