

VT04, VT04A and VT02 Visual IR Thermometers

Technical Data

Detect issues instantly!

Eliminate the need for multiple temperature measurements. Fluke Visual IR Thermometers combine the convenience of a spot thermometer with the visual advantage of an infrared heat map.

- See temperature patterns in a blended heat map image
- Intuitive enough to use right out of the box
- Pocket-size design
- Breakthrough affordability

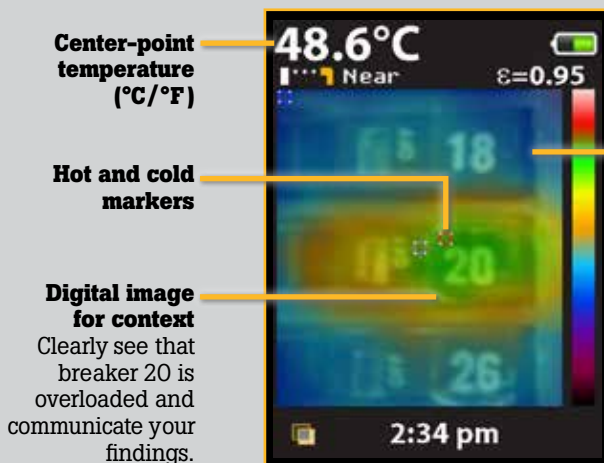
Designed to see it all

Every Fluke Visual IR Thermometer has a built-in digital camera with an infrared heat map overlay to instantly identify the exact location of the problem.

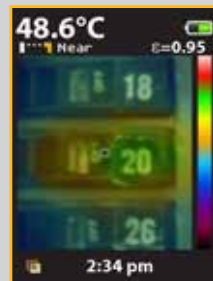


VT02

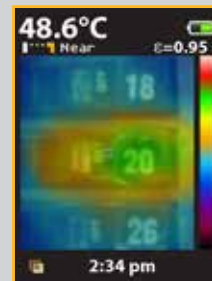
VT04/
VT04A



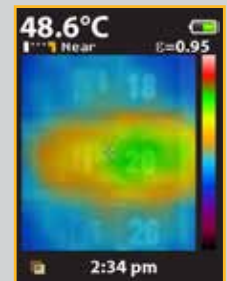
Infrared heat map overlay



25 % heat map



50 % heat map



75 % heat map



Key features of a visual IR thermometer:

Fits your budget

Fluke VT02, VT04 and VT04A Visual IR Thermometers give you bold temperature features at a price that allows you to outfit your entire team.

Intuitive interface

Get to work as soon as you take it out of the box.

Pocket-size design

Handy when you need it—easily fits in your tool bag or pocket.

Infrared heat map blending

Blend digital image with heat map overlay at 0%, 25%, 50%, 75%, and full infrared with one button.

Center-point temperature and hot and cold markers

Hot and cold markers automatically identify hottest and coldest spots within field of view.

SmartView® reporting software

Store up to 10,000 images per GB on included SD card and make reports with Fluke's professional reporting software.

Batteries that work as long as you

Choose between a rechargeable Lithium-ion battery (VT04) and 4 AA batteries (VT04A and VT02). Both options last 8 hours.

Additional benefits of VT04/VT04A

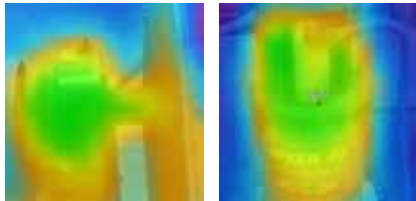
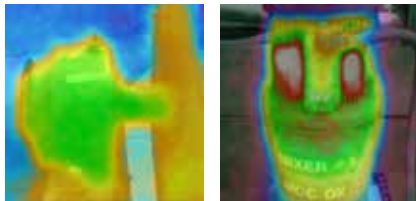
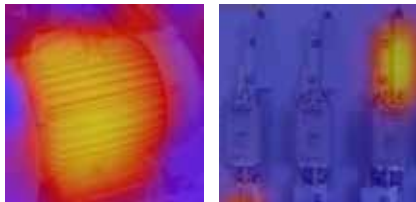
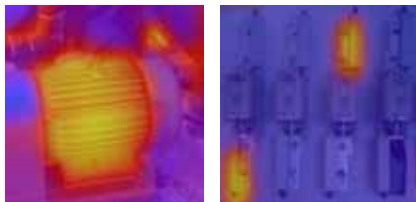
See more with PyroBlend® Plus optics

- **Excellent field of view for tight spaces:** 28° x 28°
- **Four times sharper images than VT02**

Alarm and time lapse features

- **High/low temperature alarms**—high and low temperature alarms flash whenever the temperature threshold is exceeded
- **Time-lapse image capture**—automatically capture images at set intervals of time without being there
- **Auto-monitor alarm**—automatically capture images after a user-selected temperature threshold has been exceeded

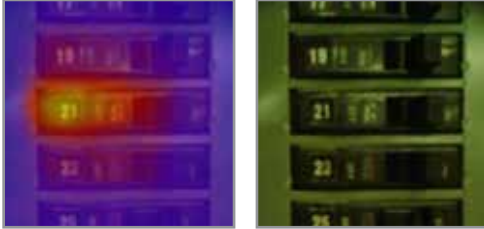
Specifications

Key features	VT02	VT04/VT04A
Built-in digital camera	Yes	
Infrared heat map overlay	Yes, five blending modes	
Image optics system	PyroBlend® optic 	PyroBlend® Plus optic 4x sharper image than VT02 
Field of view	20° x 20° 	28° x 28° 
High/low temperature alarms	—	Yes
Time-lapse image capture	—	Yes
Auto-monitor alarm	—	Yes
Battery type	Four (4) AA batteries	VT04: Li-ion rechargeable; VT04A: Four (4) AA batteries
Ergonomics	Slim pocket-sized design	
Hot and cold markers	Yes	
General specifications		
Battery life	Eight (8) hours	
Temperature measurement range	-10 °C to +250 °C (14 °F to 482 °F)	
Temperature measurement accuracy	± 2 °C or ± 2 %	
Temperature measurement	Yes, center-point	
Storage medium (micro SD card)	Stores up to 10,000 images per GB (4 GB card included)	
Infrared spectral band	6.5 µm to 14 µm	
Level and span	Auto	
Focus mechanism	Focus free	
Alignment of blended visual image and infrared heat map	NEAR: <23 cm (9 in) from target FAR: >23 cm (9 in) from target	
Dimensions	21 cm x 7.5 cm x 5.5 cm (8.3 in x 3 in x 2.2 in)	
Weight	385 g (13.5 oz)	VT04: 350 g (12.5 oz); VT04A: 385 g (13.5 oz)
File format	.is2 format saved to SD card. User can create professional reports or export images in SmartView® (BMP, DIB, GIF, JPE, JFIF, JPEG, JPG, PNG, TIF and TIFF); go to Fluke website to download software free	
Safety and compliance	CFR47: 2009 Class A. Part 15 subpart B; CE: EN 61326:2006; IEC/EN 61010-1:2010	
Warranty	Two-years	

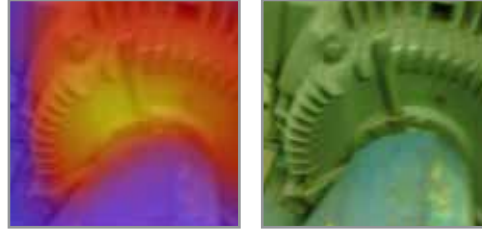
Key applications

Hot and cold spots can't hide anymore in electrical, HVAC, mechanical, and automotive applications. Watch videos and get application notes at www.fluke.co.uk/vtapps.

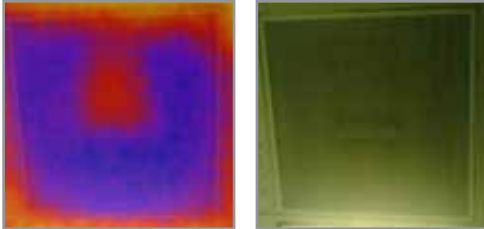
Overloaded breakers



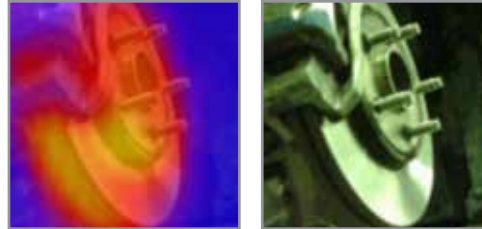
Overheating motor



Faulty air damper



Brake rotor



Ordering information

FLK-VT04 VT04 Visual IR Thermometer

FLK-VT04A VT04A Visual IR Thermometer

FLK-VT02 VT02 Visual IR Thermometer

Included with product*

VT04: includes a hard case, micro SD card and adapter, a lithium ion rechargeable battery, and micro USB charger/power supply (including worldwide adapters).

VT04A: includes a soft case, micro SD card and adapter, and 4 AA batteries.

VT02: includes a soft case, micro SD card and adapter, and 4 AA batteries.

All models include printed quick start guides in English, Spanish, German, French and Simplified Chinese; other languages are available to download from the Fluke website at www.fluke.com/vtquickstart. The users manual (in multiple languages) and SmartView® software (18 languages) are available for free download from the Fluke website at www.fluke.com/vtmanual and www.fluke.com/vtsmartview.

Optional

FLK-VT04-CHARGER Replacement Charger for VT04

FLK-VT04-BATTERY Replacement Battery for VT04

FLK-VT04-HARD CASE Hard Case for Visual IR Thermometers

C90 Soft Case for DMMs and Visual IR Thermometers

Save money with Fluke kits:

FLK-VT04-MAINT-KIT Includes a VT04 Visual IR Thermometer and a 1507 Insulation Multimeter

FLK-VT04-HVAC-KIT Includes a VT04 Visual IR Thermometer, 902 True-rms HVAC Clamp Meter and a 116 Digital Multimeter.

FLK-VT04-ELEC-KIT Includes a VT04 Visual IR Thermometer, a 117 Electricians Multimeter and a 376 AC/DC True-rms Clamp Meter

*The following accessories have been removed from the visual IR thermometer packaging: lanyard, hard carrying case (still included with VT04), SmartView® and owner's manual CDs (available for download from the Fluke website).

Fluke. *Keeping your world up and running.*®

Fluke Europe B.V.
P.O. Box 1186
5602 BD Eindhoven
The Netherlands
Web: www.fluke.co.uk

For more information call:
In Europe/M-East/Africa
+31 (0) 40 2 675 200 or
Fax: +31 (0) 40 2 675 222

Fluke (UK) Ltd.
52 Hurricane Way
Norwich, Norfolk
NR6 6JB
United Kingdom
Tel.: +44 (0) 20 7942 0700
Fax: +44 (0) 20 7942 0701
E-mail: industrial@uk.fluke.nl
Web: www.fluke.co.uk

©2013-2014 Fluke Corporation. All rights reserved.
Data subject to alteration without notice. 3/2014
Pub_ID: 12152-eng

Modification of this document is not permitted without written permission from Fluke Corporation.

X-ON Electronics

Largest Supplier of Electrical and Electronic Components

Click to view similar products for [Environmental Test Equipment](#) category:

Click to view products by [Fluke](#) manufacturer:

Other Similar products are found below :

[CW40](#) [F150C10E3DRT](#) [F150LTC20](#) [F150CD10E2](#) [F150L75](#) [F150LRS](#) [S-11](#) [FLUKE-LDG](#) [382153](#) [FM100](#) [RH210](#) [382253](#) [MO290-P](#)
[GEO-CABLE-REEL-50M](#) [T197914](#) [RD300-L](#) [IR11BD](#) [IR11GM](#) [IR12GM](#) [IR21BD](#) [IR31CE](#) [IR32BC](#) [IR33BC](#) [MP7217TC](#) [NGM-1](#) [SGX-](#)
[7NH3](#) [UT381](#) [F150-SLC50](#) [AW-CO-1000](#) [AW-NmHc-100](#) [3.000.401](#) [AX-7535](#) [CS-9S6SS-A](#) [P 2800 A](#) [P 2801](#) [P 2802](#) [P 5039](#) [P 5130](#) [P](#)
[5055](#) [P 5060](#) [P 5065](#) [P 5086](#) [P 5090](#) [P 5110](#) [P 5115](#) [P 5135](#) [P 5140](#) [P 5145](#) [P 5150](#) [P 5160](#)