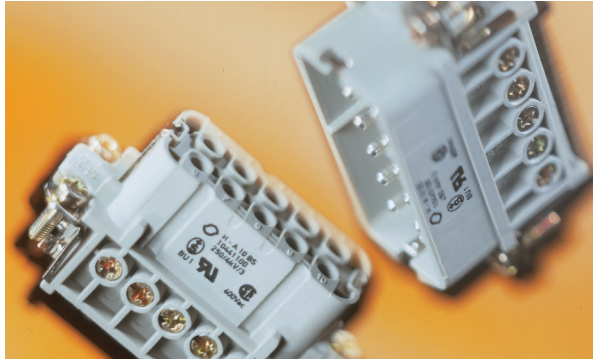


# EPIC® HA Series



Similar to the HBE series inserts but more compact, EPIC® HA series inserts are used whenever space is limited. EPIC® HA 3/4 inserts and housings provide the smallest possible footprint in a 10A power connector. HA 10-48 inserts are unique because of their shortened ground straps, which still allow for a wire cross-section up to 2.5 mm<sup>2</sup>. HA 3-48 screw-terminated inserts fit into EPIC® HA series housings. A modified EPIC® HB 48 housing can fit 64 contacts.

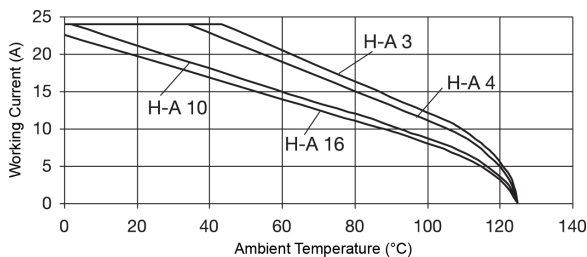
## Technical Data

<b>Number of Contacts:</b>	3, 4, 10, 16, 32, 48, 64 (+PE)	<b>Rated Current:</b>	
<b>Temperature Range:</b>	-40°C to +100°C	- UL:	
- Short-term:	up to +125°C	- EPIC® HA 3/4:	10A
<b>Pollution Level:</b>	3	- EPIC® HA 10-64:	14A
<b>Dimensioning Transient:</b>	4 kV	- CSA:	
<b>Mating Cycles:</b>	- Per DIN EN 61984:2008 Service Life Test: Tested to 100 cycles and passed - Per Contact Thermal Test: Useful service up to 500 cycles is possible at rated voltage and current*	- EPIC® HA 3/4:	10A
<b>Test Voltage:</b>	4 kV	- EPIC® HA 10-64:	16A
<b>Rated Voltage:</b>		- IEC:	
- UL:	600V	- EPIC® HA 3/4:	10A
- CSA:	600V	- EPIC® HA 10-64:	16A
- IEC:		- SEV:	16A
- EPIC® HA 3/4:	400V	<b>Wire Size:</b>	
- EPIC® HA 10-64:	250V	- EPIC® HA 3/4:	
- SEV:	250V	- solid or stranded wire with ferrule:	20-14 AWG (0.5-2.5 mm <sup>2</sup> )
		- EPIC® HA 10-64:	
		- solid or stranded wire with ferrule:	20-14 AWG (0.5-2.5 mm <sup>2</sup> )
		- for stranded wire without ferrule:	18-14 AWG (0.75-2.5 mm <sup>2</sup> ) (requires insert with wire protection)
		<b>Contact Material:</b>	Silver-plated copper alloy
		<b>Contact Resistance:</b>	1.5-4 mΩ

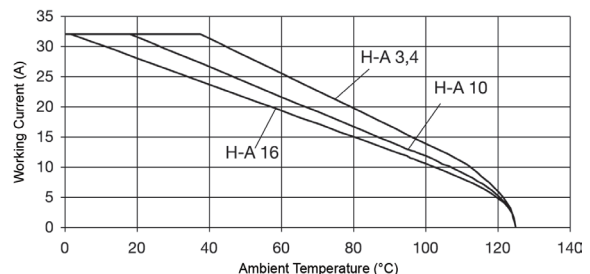
\* In dry, non-conductive, non-corrosive environments when protected in a housing rated at least IP54 and disconnected for cycling and maintenance only.

## EPIC® HA Inserts: Derating Curves

EPIC® HA Screw-Terminated  
16 AWG (1.5 mm<sup>2</sup>)

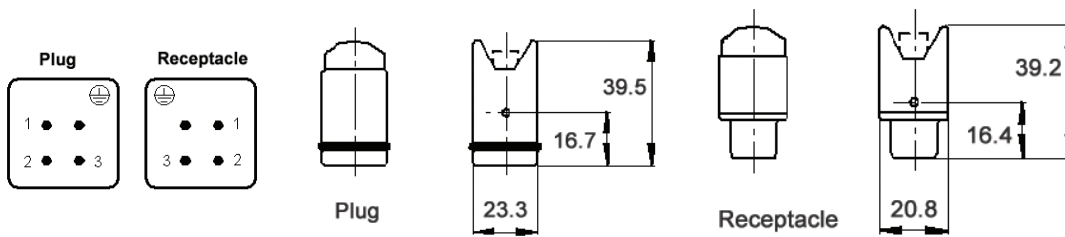


EPIC® HA Screw-Terminated  
14 AWG (2.5 mm<sup>2</sup>)



## EPIC® HA 3 Inserts Screw-Terminated

View from Cable Side



All dimensions are in mm.

### Approvals



### Complete the Installation



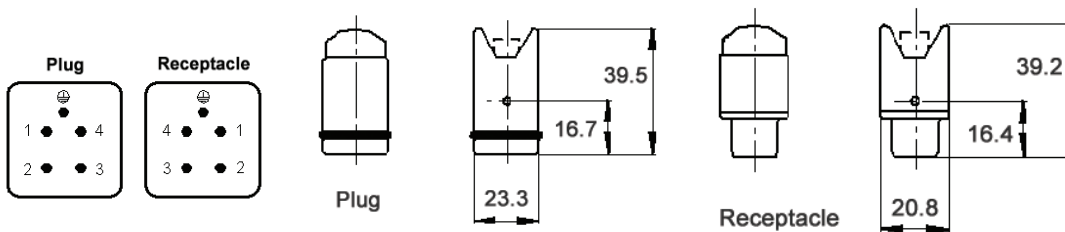
HA 3/4:  
page 400



Coding Pin:  
10451400

Description	Plug	Receptacle
Screw-Terminated	10420000	10421000

View from Cable Side



All dimensions are in mm.

### Approvals



### Complete the Installation



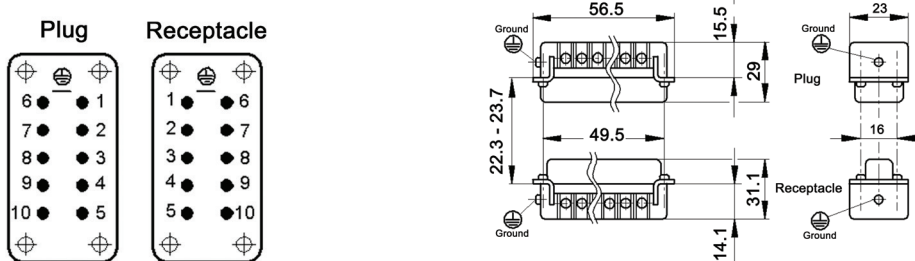
HA 3/4:  
page 400



Coding Pin:  
10451400

Description	Plug	Receptacle
Screw-Terminated	10431000	10432000

View from Cable Side



All dimensions are in mm.

### Approvals



### Compatible Housing



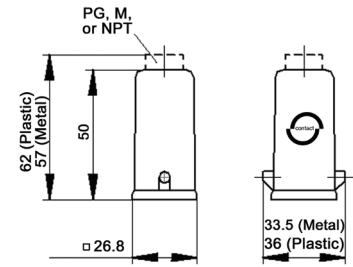
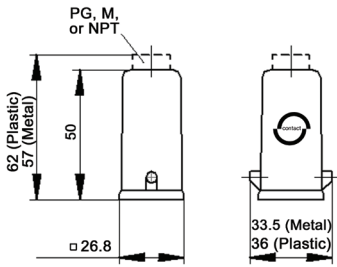
HA 10:  
page 402

Description	Plug	Receptacle
Screw-Terminated with Wire Protection	10440100	10441100
Screw-Terminated without Wire Protection	10440000	10441000

Photographs are not to scale and are not true representations of the products in question.  
For current information go to our website. If not otherwise specified, all values relating to the product are nominal values.

# EPIC® HA 3/4 Hoods

## Single Lever Bolts



All dimensions are in mm.

### Technical Data

<b>Specifications:</b>	DIN 43652, DIN 50262 (metric)	<b>Protection Class:</b>	NEMA 4, NEMA 12, IP65
<b>Temperature Range:</b>	-40°C to +125°C	<b>Material:</b>	Powder-coated aluminum alloy

PG	Size of Entry		Material	Part Number: Without Cable Gland			Part Number: With Cable Gland	
	NPT	Metric		PG	NPT	Metric	PG	Metric
<b>Top Entry</b>								
11	1/2"	20	Die-cast Zinc	10512100	105121NP	19512100	10426500	19426500
11	1/2"	20	Black Plastic	10425500	104255NP	19425500	10426700	—
11	1/2"	20	Gray Plastic	10426000	104260NP	19426000	10426400	—
<b>Side Entry</b>								
11	1/2"	20	Die-cast Zinc	10512300	105123NP	19512300	10427500	19427500
11	1/2"	20	Black Plastic	10427300	104273NP	19427300	10620600	—
11	1/2"	20	Gray Plastic	10427000	104270NP	19427000	10427100	—

### Approvals



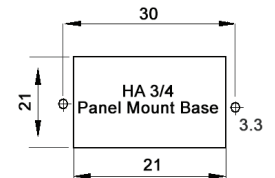
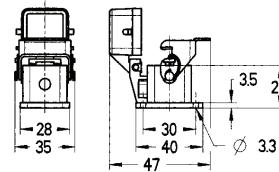
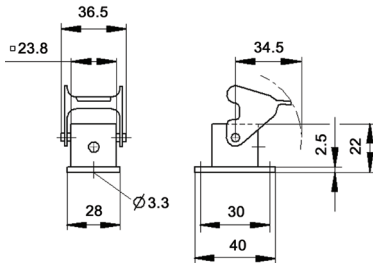
### Complete the Installation



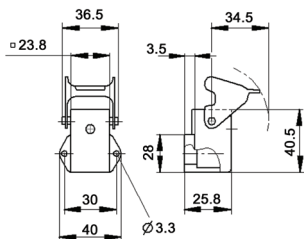
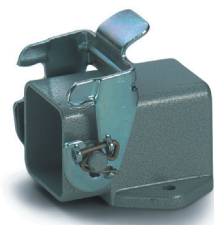
HA Dust Covers:  
page 415

# EPIC® HA 3/4 Panel Mount Bases

## Single Lever



All dimensions are in mm.



### Technical Data

<b>Specifications:</b>	DIN 43652, DIN 50262 (metric)
<b>Temperature Range:</b>	-40°C to +125°C
<b>Protection Class:</b>	NEMA 4, NEMA 12, IP65
<b>Material:</b>	Powder-coated aluminum alloy

### Complete the Installation



Dust Covers:  
page 415

### Approvals



Description	Die-cast Zinc	Part Number Black Plastic	Gray Plastic
Panel Mount Base	10422500	10422200	10422000
Panel Mount Base with Dust Cover	44429015	—	—
Right-Angle Panel Mount Base	10423500	10423100	10423000

Photographs are not to scale and are not true representations of the products in question. For current information go to our website. If not otherwise specified, all values relating to the product are nominal values.

## X-ON Electronics

Largest Supplier of Electrical and Electronic Components

*Click to view similar products for [epic manufacturer](#):*

Other Similar products are found below :

[44420040 + 73002716](#) [19426500](#) [72004000 + 73018000](#) [13.1623](#) [HBE24-FK-SE-PM-M20](#) [11161000](#) [11.1610](#) [10.4225](#) [9198+00022030](#)  
[72004000 + 73002756](#) [72000010](#) [10.5310](#) [10.4264+10.4310](#) [72040010](#) [HA4-FK-TE-SM-M-M20](#) [10.4310](#) [8883+00022030](#)  
[10.1270+10.1970+12.9545](#) [10.4220+10.4320](#) [10.4265+10.4235+10.4200+10.4210](#) [10121000+10196000+12954500](#) [10.0720](#) [44420037 +](#)  
[73002752](#) [10102000](#) [10.4264](#) [72004000 + 73002716](#) [8990+00022030](#) [44420037 + 73018000](#) [10.1210+10.1960+12.9545](#) [10.4881](#) [10431000](#)  
[10.1920](#) [10.0220+10.0030+10.1900+10.1910+12.9544](#) [44420037 + 73028500](#) [10.4861](#) [10.4265+10.4295+10.4200+10.4210](#) [13.1622](#)  
[44420037 + 73002716](#) [10.1900](#)