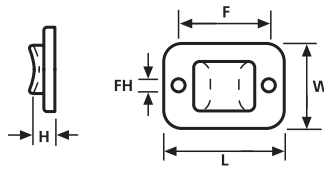


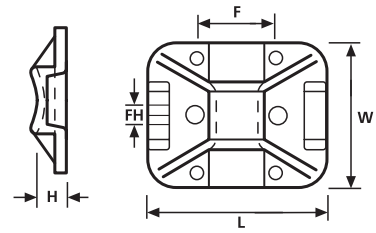
TY Self Adhesive Cable Tie Mounts

Features and Benefits

TY mounts are particularly suitable for applications with minimal space - they are mounted into the equipment prior to cable installation. The cables can be attached using a range of standard cable ties.



Cable Tie Mounts TY3G1 (S)




Cable Tie Mounts TY8G1 (S)

Application

These products are designed for simple, yet robust, installation in a wide variety of applications - particularly used in telecoms equipment, switchgear and control cabinets.


For more information on the types of adhesive used please turn to page 96.

Material Data		
RoHS	Material	Polyamide 6.6 UV Resistant (PA66W)
	Colour	Black (BK)
	Operating Temperature	-40 °C to +85 °C Continuous, (+105 °C for 500 h)
	Flammability	UL94 V2 (excluding adhesive)



HF
(halogenfree)

Material Data		
RoHS	Material	Polyamide 6.6 (PA66)
	Colour	Black (BK), Natural (NA)
	Operating Temperature	-40 °C to +105 °C Continuous, (+145 °C for 500 h)
	Flammability	UL94 V2



HF
(halogenfree)

Technical Table										
Article-No.	Type	Length (L)	Width (W)	Height (H)	Fixing Hole Ø (FH)	Fixing Hole Centres (F)	Strap Width max. (G)	Material	Colour	Adhesive
151-21319	TY3G1	20.0	14.0	3.7	2.2	15.0	4.0	PA66	Natural (NA)	-
151-11319	TY3G1S	20.0	14.0	3.7	2.2	15.0	4.0	PA66	Natural (NA)	Acrylate
151-11310	TY3G1S	20.0	14.0	3.7	2.2	15.0	4.0	PA66W	Black (BK)	Acrylate
151-21819	TY8G1	32.0	25.0	5.2	3.2	15.0	8.0	PA66	Natural (NA)	-
151-11819	TY8G1S	32.0	25.0	5.2	3.2	15.0	8.0	PA66	Natural (NA)	Acrylate
151-11810	TY8G1S	32.0	25.0	5.2	3.2	15.0	8.0	PA66W	Black (BK)	Acrylate

All Dimensions in mm. Subject to technical changes.



Please Note for Product Specific Approvals please refer to Chapter 7.3

X-ON Electronics

Largest Supplier of Electrical and Electronic Components

Click to view similar products for [Wire Identification](#) category:

Click to view products by [Hellermann](#) manufacturer:

Other Similar products are found below :

[CU6337-000](#) [CU6342-000](#) [FCA-410-12](#) [11631010](#) [1-1768037-1](#) [1-1768037-2](#) [1-1768050-0](#) [PXLK-VI](#) [Q62184-1](#) [A64304-000](#) [QMT221](#)
[HK032WE1NF038B](#) [1330-0519-10](#) [1395199-1](#) [1395200-1](#) [1395202-1](#) [DMVF050WE-300S6](#) [D-SCE-1K-2.4-50-4-CS7834](#) [1538738-1](#)
[E90935-000](#) [EC1238-000](#) [EC1465-000](#) [EC1855-000](#) [EC1859-000](#) [EC1863-000](#) [EC5415-000](#) [EC7277-000](#) [EC7352-000](#) [EC7603-000](#)
[EC7707-000](#) [EC7735-000](#) [EC7768-000](#) [EC7828-000](#) [EC7854-000](#) [EC7952-000](#) [EC8128-000](#) [1768037-8](#) [1768041-7](#) [NC-127191-10-9](#)
[HS048WE2NF038B](#) [C03232-000](#) [HTCM-SCE-14-4H-9](#) [HTMS-3/16-9](#) [HT-SCE-1/4-2.0-4](#) [HT-SCE-3/16-2.0-4](#) [HTTMS-1/2-1.50-9](#) [HTTMS-](#)
[CM-1/2-4H-9](#) [HX-SCE-19.0-50-9](#) [HX-SCE-6.4-50-4](#) [C25254-000](#)