

MICRO SWITCH
a Honeywell Division

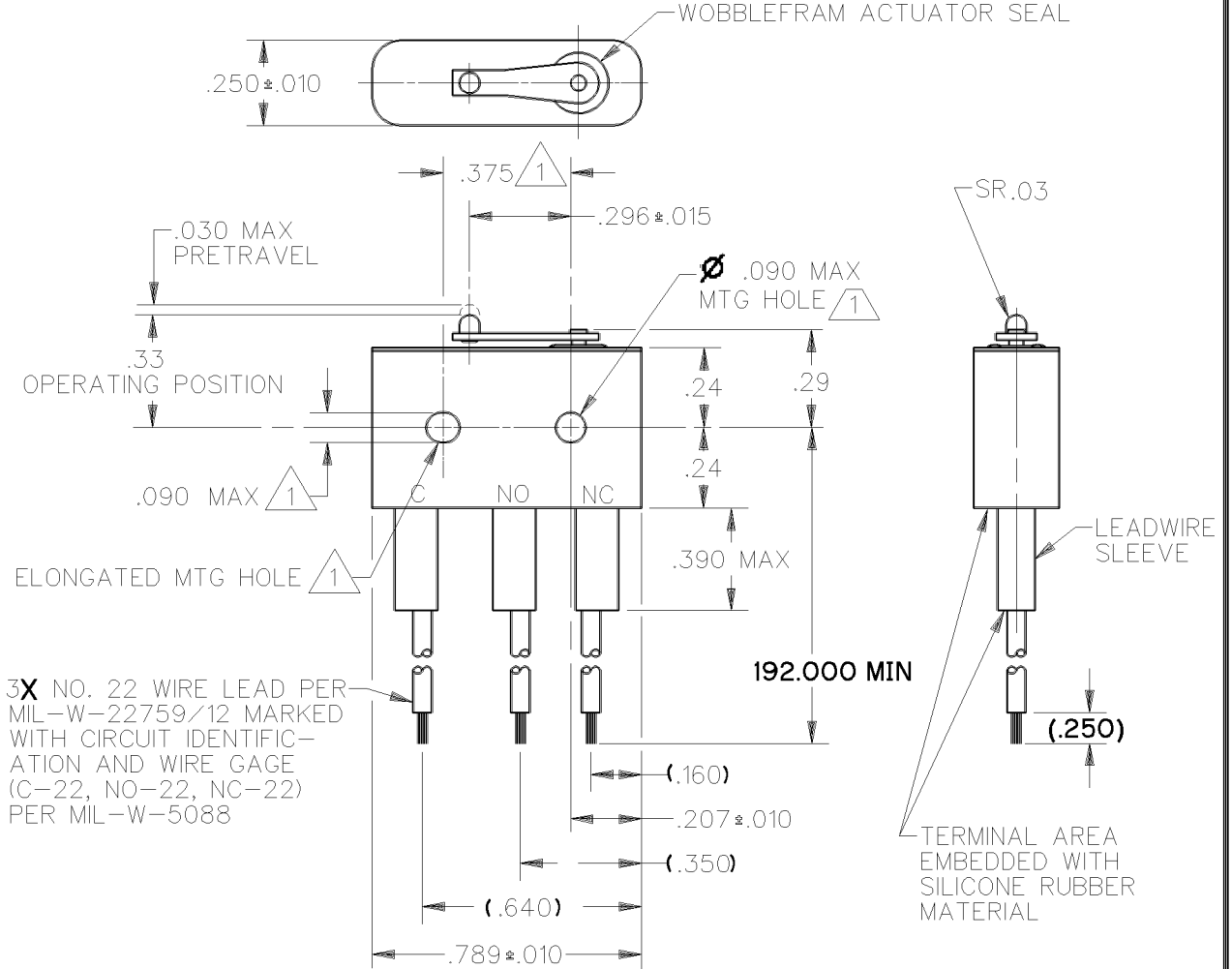
FED. MFG. CODE 91929

SWITCH - BASIC

CATALOG LISTING

6HM1-16

CATALOG LISTING
 6HM1-16
 PAGE 1 OF 1
 ISSUE 2
 REVISIONS
 A PR-23957
 GJW
 5 APR 99
 CHECK
 5APR99
 JAF
 CHECK
 5APR99
 GJW
 DRAWN
 FORMTEK



3X NO. 22 WIRE LEAD PER MIL-W-22759/12 MARKED WITH CIRCUIT IDENTIFICATION AND WIRE GAGE (C-22, NO-22, NC-22) PER MIL-W-5088

- NOTES
- 1 MOUNTING HOLES WILL ACCEPT PINS OR SCREWS OF .087 MAX DIA ON .375±.002 CENTERS
 - 2 - FOR USE IN TEMPERATURE RANGE -85°F TO +500°F (DOWN TO -300°F IF WIRE LEADS ARE NOT FLEXED)
 - 3 - HERMETICALLY SEALED (METAL TO METAL, GLASS TO METAL)
 - 4 - ALL EXPOSED PARTS ARE OF CORROSION RESISTANT MATERIALS
 - 5 WEIGHT OF SWITCH ONLY IS 0.014 LB MAX. WEIGHT OF CONDUCTOR GROUP ONLY IS 0.013 LB MAX PER FOOT
 - 6 - DO NOT APPLY MORE THAN 1 1/2 INCH LBS OF TORQUE WHEN TIGHTENING MOUNTING SCREWS

THIS DRAWING COVERS A PROPRIETARY ITEM AND IS THE PROPERTY OF MICRO SWITCH, A DIVISION OF HONEYWELL. THIS DRAWING IS NOT TO BE COPIED OR USED WITHOUT THE APPROVAL OF MICRO SWITCH.



CHARACTERISTICS		ELECTRICAL DATA			SCALE 2:1	DO NOT SCALE PRINT
OPERATING FORCE — — — — 7 OZ MAX		CONTACT ARRANGEMENT			UNLESS OTHERWISE SPECIFIED TOLERANCES ARE	
RELEASE FORCE — — — — 1 OZ MIN		S P D T				
DIFFERENTIAL TRAVEL — — — .006 MAX		LINE VOLTAGE	INDUCTIVE LOAD	RESISTIVE LOAD	ONE PLACE (.0) ±.030	
OVERTRAVEL — — — — .003 MIN		28 VDC	2 AMP	4 AMP	TWO PLACE (.00) ±.015	
		115 VAC (400 CYCLE)	2 1/2 AMP	2 1/2 AMP	THREE PLACE (.000) ±.005	
					ANGLES ±	
					WEIGHT 5	

X-ON Electronics

Largest Supplier of Electrical and Electronic Components

Click to view similar products for [Basic / Snap Action Switches](#) category:

Click to view products by [Honeywell](#) manufacturer:

Other Similar products are found below :

[83228001](#) [01.098.1358.1](#) [602EN1-6B](#) [602EN532](#) [602EN535-RB](#) [602HE5-RB1](#) [604HE162](#) [604HE223-6B](#) [624HE17-RB](#) [6HM89](#) [6PA78-JM](#)
[6SE1](#) [6SX1-H58](#) [70500840](#) [MBD5B1](#) [MBH2731](#) [73-316-0012](#) [79211759](#) [79211923](#) [79218589](#) [7AS12](#) [ML-1155](#) [ML-1376](#) [831010C3.0](#)
[831060C3.TL](#) [831090C2.EL](#) [83131904](#) [84212012](#) [8AS239](#) [8HM73-3](#) [903VB1-PG](#) [914CE1-6G](#) [PL-100](#) [11SM1077-H4](#) [11SM1077-H58](#)
[11SM1-TN107](#) [11SM405](#) [11SM703-T](#) [11SM8423-H2](#) [11SX37-T](#) [11SX48-H58](#) [11SX55-H58](#) [11SM2442-T](#) [11SM76-T](#) [11SM77-H58](#)
[11SM77-T](#) [11SM863-T](#) [11SM866](#) [11SX47-H58](#) [A7CN-1M-1-LEFT](#)