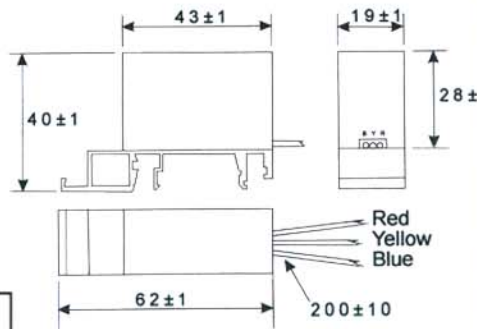
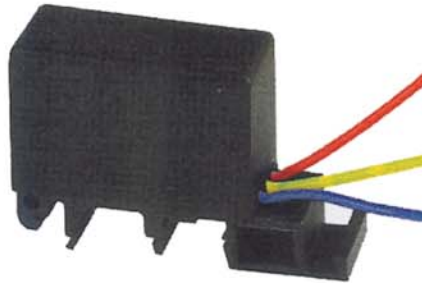


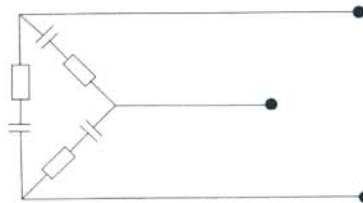
These resistor capacitor suppressors are designed to reduce contact arcing where inductive loads are involved, thereby increasing the life of their contacts.

The unit is designed for power applications with delta connections, for 3 - phase uses, and displays a high degree of reliability in various types of high voltage equipment.



CHARACTERISTICS	
Capacitors :	0.01 - 0.1 $\mu$ F x 3
Capacitance Tolerance :	$\pm$ 10 and 20%
Resistors :	47-470ohm $\pm$ 5% 4 watt x 3
Operating Voltage :	500 V RMS (MAX)
Supply Frequency :	50 / 60 Hz
Operating Temperature :	- 40°C to + 70°C
Insulation Resistance :	100 M $\Omega$ (500V)

### Circuit Diagram DELTA Construction



DIN Rail Mounting:  
Top Hat  
(EN50022, DIN46277-3 BS5584)

G. Profile  
(EN50035, DIN46277-1 BS5825)

Other capacitor/Resistor values, case shapes and terminations are available.



## X-ON Electronics

Largest Supplier of Electrical and Electronic Components

*Click to view similar products for [lcr manufacturer](#):*

Other Similar products are found below :

[MR/P/440/5/C FP013](#) [MR/P/440/10/C 423663E FP006](#) [EXFS/HR 1000PF +/- 1%](#) [MR/P/440/4/C](#) [MR/P/440/6/B](#) [EXFS/HR 2200PF +/- 1%](#)  
[FP005](#) [EP0880-PNF](#) [FSCEX 22000PF 1%63V](#) [EP0884/P](#) [PC/HV/S/WF 100NF 1.5KV](#) [MR/P/440/8/C](#) [MR/P/440/3/C](#) [PC/HV/S/WF 220NF](#)  
[1KV](#) [LCR/0.01/1500/20](#) [DF2](#) [EP0885-PNF3](#) [EP0881-PNF](#) [MR/P/440/2/B](#) [MR/P/440/8/B](#) [MR3/420B 3UF/440VAC](#) [EP0886-PNF3](#) [FSCEX](#)  
[6800PF 1%160V](#) [MR4/420B 4UF/440VAC](#) [EP0887-PNF3](#) [EP0882/P](#) [FSC 160V 56PF](#) [MR/P/440/2/C](#) [EP0882-PNF](#) [FSCEX 510PF 1% 630V](#)  
[MR10/420B 10UF/440VAC](#) [PC/HV/S/WF 47NF 1KV](#) [FSCEX 3000PF 1%160V](#) [PC/HV/S/WF 2.2NF 1KV](#) [FSCEX 8200PF 1%160V](#) [V1004](#)  
[FSC 160V 3300PF](#) [PC/HV/S/WF 10NF 1.5KV](#) [FSCEX 200PF 1% 630V](#) [EXFS/HR 6800PF +/- 1%](#) [FS/CEX 5600PF 1%160V](#) [EXFS/HR](#)  
[220PF +/- 1%](#) [FSCEX 300PF 1% 630V](#) [FSCEX 7500PF 1%160V](#) [FSCEX 2000PF 1%160V](#) [FSCEX 5100PF 1%160V](#) [FSCEX 1200PF](#)  
[1%160V](#)