

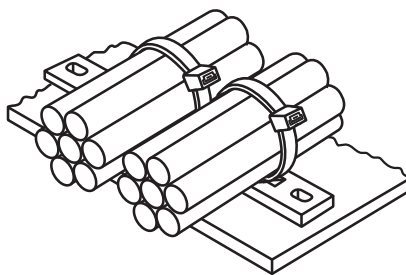
Mounting Plates Types MP and MSMP

Features and Benefits

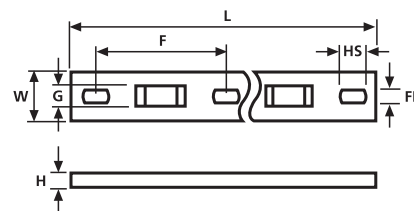
Allowing multiple cables to be run in parallel these mounting plates are simply fixed by two screws. The cables are attached to the mounting plate by using a cable tie through any combination of the available slots.

Application

Many applications require each cable run to be firmly held in place but separately from adjacent cable runs (example - control cabinets, machinery and military systems). The MP series of mounts help achieve this.



Mounting Plates Types MP and MSMP



Mounting Plates Types MP and MSMP

Material Data	
Material	Polyamide 6.6 (PA66)
Colour	Black (BK), Natural (NA)
Operating Temperature	-40 °C to +85 °C Continuous, (+105 °C for 500 h)
Flammability	UL94 V2



Technical Table

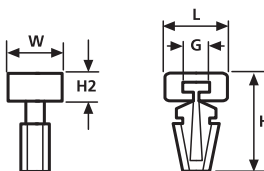
Article-No.	Type	Length (L)	Width (W)	Height (H)	Fixing Hole Ø (FH)	Fixing Hole Centres (F)	Hole Size (HS)	Strap Width max. (G)	Material	No. of bundles
151-24219	MP2M3	76.2	12.7	3.2	3.5	31.8	6.4	5.2	PA66	2
151-24319	MP3M3	108.0	12.7	3.2	3.7	31.8	6.4	5.2	PA66	3
151-24419	MP4M3	139.8	12.7	3.2	3.7	31.8	6.4	5.2	PA66	4
150-83499	MSMP4	167.0	15.9	5.2	5.1	19	7.6	8.2	PA66	4
151-24519	MP5M3	171.6	12.7	3.2	3.7	31.8	6.4	5.2	PA66	5
151-25519	MSMP5	204.0	15.7	5.3	5.1	38	7.7	8.2	PA66	5
151-25619	MSMP6	242.0	15.7	5.3	5.1	38	7.7	8.2	PA66	6

All dimensions in mm. Subject to technical changes.

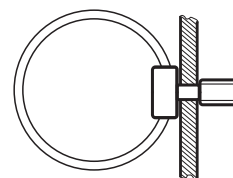
Cable Fixing Accessory TM1SF

Features and Benefits

The TM1SF mount is ideal for applications with restricted access, or where space-saving is required. The arrowhead simply pushes into a pre-drilled or pre-punched hole giving a very secure fixing.



TM1SF Fixing Base



TM1SF Fixing Base

Technical Table

Article-No.	Type	Length (L)	Width (W)	Height (H)	Height (H2)	Fixing Hole Ø (FH)	Panel Thickness max.	Strap Width max. (G)	Material	Colour
151-40119	TM1SF	10.2	7.6	15.6	4.6	6.3	3.4	5.2	PA66	Natural (NA)

All dimensions in mm. Subject to technical changes.



Please Note for Product Specific Approvals please refer to the Appendix

X-ON Electronics

Largest Supplier of Electrical and Electronic Components

Click to view similar products for [Wire Identification](#) category:

Click to view products by [Hellermann](#) manufacturer:

Other Similar products are found below :

[CU6337-000](#) [CU6342-000](#) [FCA-410-12](#) [11631010](#) [1-1768037-1](#) [1-1768037-2](#) [1-1768050-0](#) [PXLK-VI](#) [Q62184-1](#) [A64304-000](#) [QMT221](#)
[HK032WE1NF038B](#) [1330-0519-10](#) [1395199-1](#) [1395200-1](#) [1395202-1](#) [DMVF050WE-300S6](#) [D-SCE-1K-2.4-50-4-CS7834](#) [1538738-1](#)
[E90935-000](#) [EC1238-000](#) [EC1465-000](#) [EC1855-000](#) [EC1859-000](#) [EC1863-000](#) [EC5415-000](#) [EC7277-000](#) [EC7352-000](#) [EC7603-000](#)
[EC7707-000](#) [EC7735-000](#) [EC7768-000](#) [EC7828-000](#) [EC7854-000](#) [EC7952-000](#) [EC8128-000](#) [1768037-8](#) [1768041-7](#) [NC-127191-10-9](#)
[HS048WE2NF038B](#) [C03232-000](#) [HTCM-SCE-14-4H-9](#) [HTMS-3/16-9](#) [HT-SCE-1/4-2.0-4](#) [HT-SCE-3/16-2.0-4](#) [HTTMS-1/2-1.50-9](#) [HTTMS-](#)
[CM-1/2-4H-9](#) [HX-SCE-19.0-50-9](#) [HX-SCE-6.4-50-4](#) [C25254-000](#)