

battery type: Alkaline Manganese (Mercury free)
battery size: IEC: LR03; JIS: AM-4; ANSI: AAA; MN2400; Micro
chemical system: Zn / KOH-H₂O / MnO₂

nominal voltage: 1.5 V
open circuit voltage: 1.57...1.62 V new battery
 1.55...1.62 V after 1 year storage at 20°C

capacity rated: 1200 mAh all measurements at 20°C ambient
 discharge at 10mA load; 24hours/day
 End Voltage (EV): 0.8V
 1070 mAh discharge at 75ohms load; 24hours/day
 End Voltage (EV): 0.8V
minimum: 1050 mAh discharge at 20mA constant current
 End Voltage (EV): 0.8V
 300 mAh discharge at 500mA constant current
 End Voltage (EV): 0.8V

typical service output (new batteries)
 ≥ 560 cycles load resistor 3.6ohms; EV: 0.9V
 discharge 15s/m 24h/d
 ≥ 180 min load resistor: 5.1ohms; EV: 0.9V
 discharge 4min/h 8h/d
 ≥ 414 min load resistor: 10ohms; EV: 0.9V
 discharge 1h/d
 ≥ 16 h load resistor: 20ohms; EV: 0.9V
 discharge 24h/d
 ≥ 37 h load resistor: 43ohms; EV: 0.9V
 discharge 4h/d

internal resistance: ≤ 0.3 Ω at 1kHz, sine wave measurement
 according to IEC 896-2

shelf life: 5 years under proper storage conditions

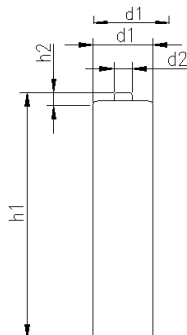
leakage resistance
 over discharge: no leakage 20ohms continuous discharge for 48h; ta: 20°C; RH: 60±15%
 high temperature: no leakage store 20days at ta: 60°C; RH:90±5%


ambient temperature range: - 10...50 °C

recommended storage conditions: 5...25 °C ambient temperature
 45...75 % rel. humidity

mechanical specifications

cell dimensions
 diameter d1: 10.4 - 0.5 mm
 diameter d2: 3.6 - 0.4 mm
 height h1: 44.4 - 0.6 mm
 height h2: 1.2 - 0.35 mm
 weight: 11.5 ± 1.5 g
 package dimensions: 55 x 44 x 48 mm
 weight (incl. batteries): 225 ± 10 g



	ANSMANN Specifications for model:	Ansmann Industrial Alkaline battery AAA - size 20pcs box
	data sheet no. / part no.	1501-0004
	supplier no.	701381
	author / date	Gramlich / 22.02.2012

X-ON Electronics

Largest Supplier of Electrical and Electronic Components

Click to view similar products for [ansmann](#) manufacturer:

Other Similar products are found below :

[5020012](#) [1000-0003](#) [5013233](#) [5030992](#) [1520-0004](#) [1501-0004-1](#) [1001-0020-UK](#) [2312-3003](#) [1250-0013](#) [1600-0199](#) [5030902](#) [1900-0019](#)
[1001-0014-UK](#) [5035362](#) [5013243](#) [5707173](#) [1600-0137](#) [5035391](#) [5000023](#) [5311113 / APS 1000](#) [1600-0138](#) [1250-0014](#) [BCA120-350](#) [1600-0145](#) [5015293](#) [5030982](#) [2311-3003](#) [5030802](#) [10950964/01](#) [5030912](#) [5016243](#) [5035222](#) [2310-3001](#) [5030641](#) [5001183](#) [1600-0154](#) [5035352](#)
[5035342](#) [ACS310](#) [5035202](#) [5015332](#) [5035201](#) [5015303](#) [2311-3002](#)