

700/800-Series

ROTARY SWITCHES

The 700 and 800-Series are single pole multi-position, general purpose rotary switches. These switches feature a nylon actuator in a metal clad construction along with a self-cleaning silver plated contact design. The 700 and 800-Series are typically used in applications requiring multi-position speed controls, such as electric fans.



Product Highlights:

- ♦ Ratings to 3A 250VAC, 6A 125VAC
- ♦ Up to 8 available detent positions
- ♦ Double "D" bushing mount
- ♦ Sturdy metal clad construction

Typical Applications:

- ♦ Small Appliance
- ♦ Industrial Control
- ♦ Marine



Dielectric Strength

UL/CSA: 1000V (minimum)

Base Material

Steel/Zinc Plate

Insulation Resistance

100 Megohms (minimum)

Actuator Material

Brass/Nickel Plate

700-1A - BL

¹
Base Part Number

²
Knob Color

1 BASE PART NUMBER: SERIES / POLES / CIRCUITRY 1 / RATING / TERMINATION 2

2A 250VAC; 4A 125VAC; 1A 125V

Solder Lugs	.250 Tabs	Position 1	Position 2	Position 3	Position 4
-	700-A	OFF	ON	ON	ON
700-1	700-1A	OFF	ON	-	-
700-2	700-2A	OFF	ON	ON	ON
700-3	700-3A	OFF	ON	ON	OFF
700-4	700-4A	OFF	ON	ON	-
700-5	700-5A	OFF	ON	OFF	-
700-6	700-6A	-	ON	OFF	ON
700-7	700-7A	-	ON	ON	-
700-8	700-8A	-	ON	ON	ON
700-9	700-9A	OFF	ON	OFF	ON

repeating for 8 positions

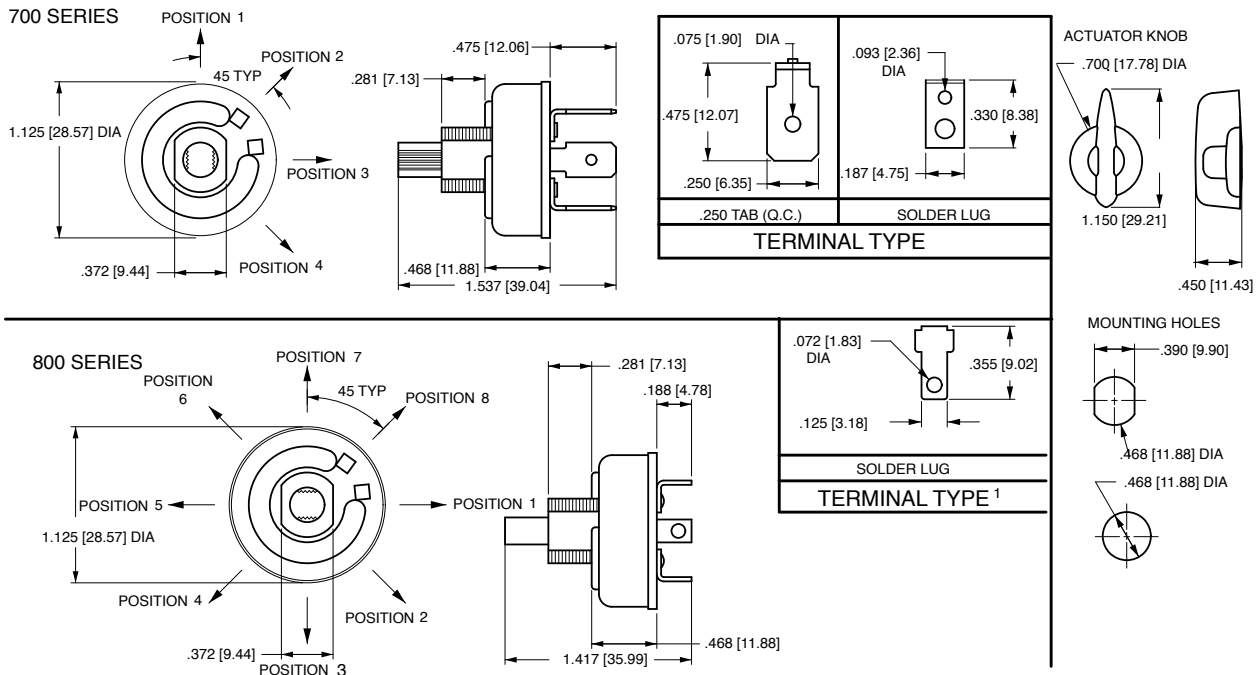
3A 250VAC; 6A 125VAC

Switch Positions	OFF Position
800-2 2 positions	800-A 1st position
800-3 3 positions	800-A2 2nd position
800-4 4 positions	800-A3 3rd position
800-5 5 positions	800-A4 4th position
800-6 6 positions	800-A5 5th position
800-7 7 positions	800-A6 6th position
800-8 8 positions	800-A7 7th position
	800-A8 8th position

2 ACTUATOR COLOR

BL Black

- Notes:
 1 700-2 and 700-2A feature 8 detent positions.
 2 800-Series terminal is a combination solder lug and quick connect.



- Notes:
 1. Terminal is combination solder lug and quick connect.

*Manufacturer reserves the right to change product specification without prior notice.

Authorized Sales Representatives and Distributors

Click on a region of the map below to find your local representatives and distributors or visit www.carlingtech.com/findarep.



About Carling

Founded in 1920, Carling Technologies is a leading manufacturer of electrical and electronic switches and assemblies, circuit breakers, electronic controls, power distribution units, and multiplexed power distribution systems. With four ISO registered manufacturing facilities and technical sales offices worldwide, Carling Technologies Sales, Service and Engineering teams do much more than manufacture electrical components, they engineer powerful solutions! To learn more about Carling please visit www.carlingtech.com/company-profile.

To view all of Carling's environmental, quality, health & safety certifications please visit www.carlingtech.com/environmental-certifications

Worldwide Headquarters

Carling Technologies, Inc.
60 Johnson Avenue, Plainville, CT 06062
Phone: 860.793.9281 **Fax:** 860.793.9231
Email: sales@carlingtech.com

Northern Region Sales Office: nrsm@carlingtech.com
Southeast Region Sales Office: sersm@carlingtech.com
Midwest Region Sales Office: mrrsm@carlingtech.com
West Region Sales Office: wrsm@carlingtech.com
Latin America Sales Office: larsm@carlingtech.com

Asia-Pacific Headquarters

Carling Technologies, Asia-Pacific Ltd.,
Suite 1607, 16/F Tower 2, The Gateway,
Harbour City, 25 Canton Road,
Tsimshatsui, Kowloon, Hong Kong
Phone: Int + 852-2737-2277 **Fax:** Int + 852-2736-9332
Email: sales@carlingtech.com.hk

Shenzhen, China: shenzhen@carlingtech.com
Shanghai, China: shanghai@carlingtech.com
Pune, India: india@carlingtech.com
Kaohsiung, Taiwan: taiwan@carlingtech.com
Yokohama, Japan: japan@carlingtech.com

Europe | Middle East | Africa Headquarters

Carling Technologies LTD
4 Airport Business Park, Exeter Airport,
Clyst Honiton, Exeter, Devon, EX5 2UL, UK
Phone: Int + 44 1392.364422 **Fax:** Int + 44 1392.364477
Email: ltd.sales@carlingtech.com

Germany: gmbh@carlingtech.com
France: sas@carlingtech.com



Carling Technologies®

Innovative Designs. Powerful Solutions.

X-ON Electronics

Largest Supplier of Electrical and Electronic Components

Click to view similar products for [Rocker Switches](#) category:

Click to view products by [Carling](#) manufacturer:

Other Similar products are found below :

[VKD2GHNB-00000-000](#) [VSD2GNNB-00000-000](#) [6-1571986-5](#) [6-1571986-9](#) [632422-4B-KD](#) [7036WWCDBX653+U622](#) [8055K52Z7V](#)
[8138K20E6M50](#) [FMC18A2200002](#) [84206L](#) [84312LX](#) [PREDD4-07F-BB0FW](#) [PREDD5-07F-BB0GW](#) [PRFDD1-16F-BB000](#) [PRFDD3-16F-](#)
[BB000](#) [1-1634201-0](#) [999-16702-001](#) [A101J2ZQ004](#) [A101J4ZQ004](#) [A101J51CB0004](#) [A107J51ZQ0004](#) [A201J1AQ004](#) [A201J1AV2Q004](#)
[A201J3ZB004](#) [A201J50ZQ004](#) [A203J51ZQ0004](#) [A226L11YZQ](#) [A22L11A](#) [A435S1YZQ](#) [H8500XBBBBL-A](#) [H8653VBBG2577W](#)
[HB130CHNWWNAAC](#) [1251.0303](#) [AE205J60V3B004](#) [RH110C2NBB](#) [1352.0107](#) [1363.0201](#) [AML25GBF2AA03GR](#) [1571099-3](#) [1571987-4](#)
[1571987-5](#) [1571989-7](#) [B123J77V7B2](#) [B226J50W4Q22P](#) [B433J37ZQ22M](#) [160212E](#) [1801.1164](#) [1831.1102](#) [1833.3402](#) [1837.1118](#)