



Blackburn®

T&B Catalog Number: BTC0614
UPC Number: 78378661131
Description: Type BTC - Copper Single-Conductor, One Hole Mount (Offset-Tang) for Conductor Range 14 AWG-6 Str.
Status: Active

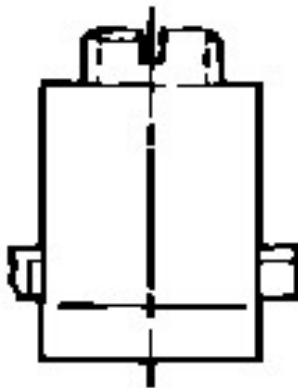
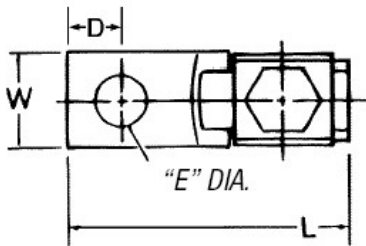


Fig. 2

Features

Uniquely designed pressure bar and notched v-bottom collar provide vise-like grip between conductor and terminal.
 Made of electrolytic seamless copper. Screws are zinc-plated steel.

General

Style Type BTC - Copper Single-Conductor, One Hole Mount (Offset-Tang)
Material Copper
Wire Range 14 AWG-6 Str.

Dimension Information

Length (inches) 1 3/32
Width (inches) 3/8
Height (inches) 25/32
D (inches) 7/32
E (inches) 13/64
F (inches) 5/64

Packaging

T&B Order Multiple 10
T&B Inner Pack 10
Package in Units 100
T&B Sold in UOM Each
T&B Weight Per UOM 2.8 lbs. per 100

Notes

UL 486A tested.

Certifications

RoHS Compliance No

Certifications



File Nbr:
E9809

For further technical assistance, please contact us...

Thomas & Betts - USA
 8155 T&B Blvd.
 Memphis, TN 38125
 www.tnb.com

T&B Technical Support
 MS 3B-50
 8155 T&B Blvd.
 Memphis, TN 38125

Hours: 7AM - 6PM CDT
 Monday-Friday
 Phone: (888) 862-3289
 Fax: (901) 252-1321
 Email: techsupport@tnb.com

X-ON Electronics

Largest Supplier of Electrical and Electronic Components

Click to view similar products for [abb manufacturer](#):

Other Similar products are found below :

[TV10-516R](#) [017667013](#) [RF727](#) [2CMA100178R1000](#) [5SDD 92Z0401](#) [ESV14-BS](#) [EZS-21-250](#) [F204AC-40/0.03](#) [F362-25/0.03](#)

[GJL1211001R0011](#) [GJL1211201R8000](#) [GJL1211501R8000](#) [GJL1213001R0017](#) [GJL1213001R0101](#) [GJL1311001R0101](#) [GJL1311001R8010](#)

[GJL1311201R0001](#) [GJL1313001R0011](#) [GJL1313001R0101](#) [GJL1317201R0001](#) [A40-30-10-84](#) [AF09-30-01-11](#) [AF460-30-11-68](#) [1455](#) [B14-](#)

[250](#) [EF45-30](#) [ERG297](#) [HSC2-20](#) [1SAM201904R1001](#) [1SAM350000R1003](#) [1SAZ721201R1009](#) [1SAZ721201R1014](#) [1SAZ721201R1025](#)

[1SDA057197R1](#) [1SFA611101R1002](#) [1SFA611130R1103](#) [1SFA611131R1101](#) [1SFA611143R1101](#) [1SFA611202R1108](#) [1SFA611203R1108](#)

[1SFA611215R1001](#) [1SFA611216R1108](#) [1SFA611285R1002](#) [1SFA611702R6006](#) [1SFA616162R1025](#) [1SFA619100R3015](#)

[1SVR730020R0200](#) [IPC4111](#) [OS30FACC12](#) [OS60GJ03](#)