

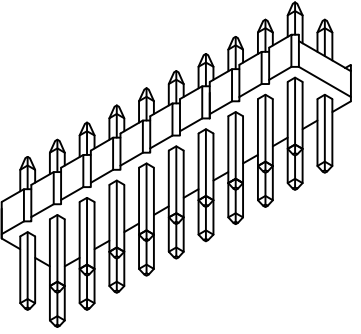
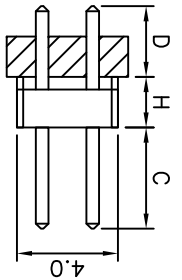
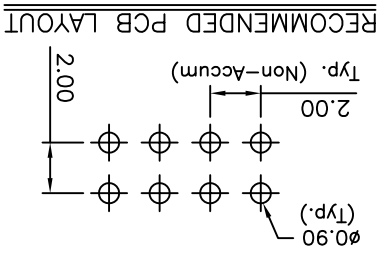
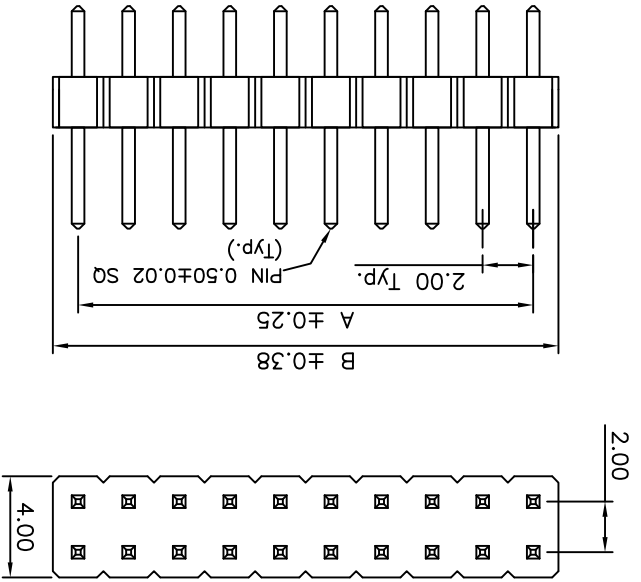
REV	DATE	DESCRIPTION
A	31/10/07	INITIAL RELEASE
B	27/04/09	PACKING OPTIONS CHANGED
C	03/06/09	CORRECTION TO ORDERING GRID
D	30/07/09	CHANGE TO SOLDER TEMP, INFORMATION
E	08/12/09	AMENDMENT TO STANDARD DIMENSIONS
F	29/08/12	PACKING OPTION ADDED

**By:** LTH    **CB:** BF115, BF120, BF080, BF095, BF100  
**SA:** DR  
**AE:** AE  
**DR:** DR  
**SA:** SA

**REVISIONS:**  
 A: 31/10/07  
 B: 27/04/09  
 C: 03/06/09  
 D: 30/07/09  
 E: 08/12/09  
 F: 29/08/12

**DESCRIPTIONS:**  
 A: INITIAL RELEASE  
 B: PACKING OPTIONS CHANGED  
 C: CORRECTION TO ORDERING GRID  
 D: CHANGE TO SOLDER TEMP, INFORMATION  
 E: AMENDMENT TO STANDARD DIMENSIONS  
 F: PACKING OPTION ADDED

**FEATURES 特点**  
 EASYLY BREAKABLE NOTCHES 易折断裂口  
 STANDOFFS FACILITATE POST SOLDER CLEANING.  
 CUSTOM PIN LENGTH.  
 INSULATOR MATERIAL 绝缘体物料  
 STANDARD MATERIAL: POLYESTER 聚酯, LCP, UL 94-V0  
 OPTIONS 可选项: POLYESTER 聚酯, LCP, UL 94-V0  
 OR POLYESTER 聚酯, PBT, UL94-V0  
 SOLDERING PROCESS 可焊性:  
 NYLON 6T (STANDARD 标准物料)  
 IR REFLOW 回流焊: 260°C for 10 sec.  
 MANUAL SOLDER 人工焊接: 350°C for 3-5 sec  
 WAVE SOLDER 230°C for 5-10 sec.  
 PBT (OPTION 可选项物料) - MANUAL SOLDER 人工焊接: 330°C for 3-5 sec.  
 (NOT SUITABLE FOR HI-TEMP PROCESS 不适合高温处理)  
 LCP (OPTION 可选项物料) -  
 IR REFLOW 回流焊: 260°C for 10 sec.  
 MANUAL SOLDER 人工焊接: 350°C for 3-5 sec  
 WAVE SOLDER 250°C for 5-10 sec.  
 MATES WITH 配套之母座 (SUBJECT TO PIN LENGTH 在端子长度适合的条件下):  
 MANUAL SOLDER 人工焊接: 350°C for 3-5 sec  
 WAVE SOLDER 250°C for 5-10 sec.



**Ordering Grid**  
**BF050** - XX - X - X - XXXX - X - XXXX - X - X  
 No. of Contacts: 04 to 80  
**A = Gold Flash All Over (Standard)**  
 B = Selective Gold Flash Contact Area/  
 Tin On Tail  
 C = Tin All Over  
 G = 10µ" Gold Contact Area/Tin On Tail  
 I = 30µ" Gold Contact Area/Tin On Tail  
 Insulator  
 Height 'H'  
 A = 1.50mm  
**B = 2.00mm (Standard)**  
 Dimension C (1/100mm)  
 Dimension D (1/100mm)  
 (Post Height)  
**Standard - 4.00mm = 0400**  
**Standard - 6.00mm = 0600**  
 Or specify Dimension C  
 e.g: 2.50mm = 0250  
 TOL +/- 0.2mm  
 Insulator Material  
 N = Nylon 6T (Standard)  
 L = LCP  
 P = PBT  
 Dimension D (1/100mm)  
 (Tail Length)  
**Standard - 3.00mm = 0300**  
 Or specify Dimension D  
 e.g: 2.50mm = 0250  
 TOL +/- 0.2mm  
 Packing Options  
**G = Plastic Box (Standard)**  
 B = Tape and Reel with Cap  
 D = Tube  
 E = Tube with Cap

Tolerances	Dimensions in mm
(Except as noted)	
X ± 0.30	X ± 0.5°
X ± 0.20	X ± 0.2°
X ± 0.15	X ± 0.1°
X XXX ± 0.10	XXX ± 0.5°

Third Angle Projection  
 THIS DRAWING IS CONFIDENTIAL AND MUST NOT BE COPIED OR DISCLOSED WITHOUT WRITTEN CONSENT  
 www.globalconnector.com  
 Scale: NTS  
 Revision: F  
 Material: LTH  
 Drawn by: E & OE  
 Sheet No.: 1/1

CONTACTS		DIMENSIONS	
A	B	A	B
4	2.0	4.0	6.0
6	4.0	6.0	8.0
8	6.0	8.0	10.0
10	8.0	10.0	12.0
12	10.0	12.0	14.0
14	12.0	14.0	16.0
16	14.0	16.0	18.0
18	16.0	18.0	20.0
20	18.0	20.0	22.0
22	20.0	22.0	24.0
24	22.0	24.0	26.0
26	24.0	26.0	28.0
28	26.0	28.0	30.0
30	28.0	30.0	32.0
32	30.0	32.0	34.0
34	32.0	34.0	36.0
36	34.0	36.0	38.0
38	36.0	38.0	40.0
40	38.0	40.0	42.0
42	40.0	42.0	44.0
44	42.0	44.0	46.0
46	44.0	46.0	48.0
48	46.0	48.0	50.0
50	48.0	50.0	52.0
52	50.0	52.0	54.0
54	52.0	54.0	56.0
56	54.0	56.0	58.0
58	56.0	58.0	60.0
60	58.0	60.0	62.0
62	60.0	62.0	64.0
64	62.0	64.0	66.0
66	64.0	66.0	68.0
68	66.0	68.0	70.0
70	68.0	70.0	72.0
72	70.0	72.0	74.0
74	72.0	74.0	76.0
76	74.0	76.0	78.0
78	76.0	78.0	80.0
80	78.0	80.0	

**GCT**

## X-ON Electronics

Largest Supplier of Electrical and Electronic Components

*Click to view similar products for [FFC & FPC Connectors](#) category:*

*Click to view products by [GCT](#) manufacturer:*

Other Similar products are found below :

[HFW11R-1STE1H1LF](#) [FH29B-100S-0.2SHW\(99\)](#) [FA5S008HP1](#) [FH29B-120S-0.2SHW\(99\)](#) [FH29B-80S-0.2SHW\(99\)](#) [FHS-16](#) [FPH-2022G](#)  
[52610-1075](#) [52610-1275](#) [52610-1934](#) [XF3M\(1\)-1415-1B-R100](#) [501864-3091-TR225](#) [0525594033](#) [086210010340800](#) [086222026001800](#)  
[52271-2869-CUT-TAPE](#) [62674-201121DLF](#) [62684-36210E9ALF](#) [52610-1675](#) [52746-1671-TR250](#) [10051922-2810EHLF](#) [6-520415-9](#)  
[BD021-09A-A1-0350-0200-0550-LD](#) [SFV6R-1STE9HLF](#) [XF3M-2915-1B-R100](#) [1658549-1](#) [62674-221121ALF](#) [46214008010800](#)  
[046298003000883](#) [151660622](#) [842-816-2630-035](#) [AYF530665TA](#) [AYF351525](#) [046296011930846+](#) [AYF352325A](#) [046254020000800+](#)  
[FH19C-13S-0.5SH\(99\)](#) [FH39J-51S-0.3SHW\(99\)](#) [AYF355125A](#) [AYF530365TA](#) [FH29B-44S-0.2SHW\(99\)](#) [SFW5R-2STAE9LF](#) [AYF351125A](#)  
[AYF350725A](#) [62684-502100AHLF](#) [FH39-61S-0.3SHW\(99\)](#) [AYF414035A](#) [10064555-172520HLF](#) [AYF212335A](#) [504754-2500](#)