

# E1

## Panel Mounted

---

Keyswitches

### E1

Dimensions (mm)  $\varnothing$  15.1 × 15.1

- tamper proof
- 2 positions
- key trapping options
- gold-plated contacts
- PCB Terminals

Rating 250 VAC, 100 mA

Dimensions (mm) 18 × 16

Actuator ■ plastic key

Options none

---



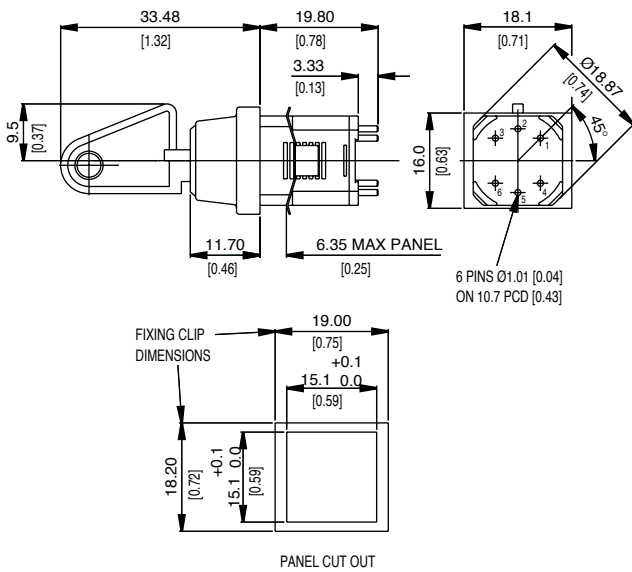
## Preferred Range

Reference	Terminal	Circuit	Actuator	Contacts	Electrical rating
AE	Pins	2 pole CO	Key	Gold-plated	250 VAC, 100 mA

---

## Specifications

Key	Glass-fibre reinforced nylon
Body	Glass-fibre reinforced nylon
Springs	Stainless steel
Contacts	Moving - gold-plated phosphor bronze, Fixed - gold-plated brass
Terminals	1.01 mm (0.04 in) dia × 3.3 mm (0.13 in) gold-plated brass
Temperature range °C	-20°C to +60°C
Mechanical life	50,000 operations (minimum)
Mounting	Retaining clip
Actuators	Key
Switching function	Double pole change-over, three circuit selector
Key indexing	90°



## Recommended maximum electrical ratings

Voltage (max)	Resistive load (A)	Inductive load	Horsepower	Approval
250 VAC	100 mA	-	-	General rating - 50,000 operations
0-15 VDC	100 mA	-	-	General rating - 50,000 operations
15-30 VDC	100 mA	-	-	General rating - 50,000 operations



# E1

## Operating Characteristics

Switching function	Reference	Actuator Type	Body style (mm)	Key trapping	Diagram
Double pole change-over	E1AAAAAE	Key	A - 18 × 16	No	
Double pole change-over	E1ACAAAE	Key	A - 18 × 16	Yes	
Three circuit selector	E1AAAAAJ	Key	A - 18 × 16	No	

## Type coding key for standard products

Type	E1	Example: E1	A	A	A	A	A	E
Key	A	Standard key						
ing	A	Key removable in all positions						
	C	Key trapped horizontally, right						
yle	A	18.0 mm (0.710 in) × 16.0 mm (0.630 in) rectangular bezel						
our	A	Black						
nal	A	1.01 mm (0.040 in) dia × 3.30 mm (0.130 in)						
ion	E	Double pole change-over						
	J	Three circuit selector						

## X-ON Electronics

Largest Supplier of Electrical and Electronic Components

*Click to view similar products for [Keylock Switches](#) category:*

*Click to view products by [Saia-Burgess](#) manufacturer:*

Other Similar products are found below :

[89496-09](#) [89638-00](#) [58J9A90-01C02N](#) [719-0022-020](#) [719-0122-000](#) [719-0201-000](#) [719-0202-000](#) [719-0702-000](#) [84800-04](#) [88521-00](#)  
[GKNC33L](#) [GKNC3L](#) [PVA2OAH5](#) [14-136.025K](#) [14-235.022K](#) [AS6H-2K2A](#) [AS6M-2K1B](#) [1571487-1](#) [HW4K-2BF20](#) [JD7510H](#)  
[K6SLYE1.55NL327SD](#) [KH3C-20C](#) [89638-05](#) [A028301](#) [A165K-J2AL-2](#) [A165K-J2M-2](#) [A165K-J3AMR](#) [A165K-J3M](#) [205389 \(PAYGUARD](#)  
[BUTTON PAD\)](#) [2SWK131AL102](#) [30PA39-AML](#) [LW6MJ-2C64WWB](#) [AS6M-2K1A](#) [51-401.036D](#) [51-401.036K](#) [51-414.036D](#) [HW1K-](#)  
[3HF20](#) [4370039](#) [Y1112-2027CLFT](#) [4B01H322NCFQ](#) [51-155.025D](#) [51-195.025D](#) [51-378.AD](#) [51-404.036D](#) [51-405.036D](#) [51-415.036D](#) [1-](#)  
[1437597-8](#) [86945-05](#) [88169-05](#) [719-0204-000](#)