

**EMESSEM SOLENOID COMPANY LTD.**  
SPECIALISTS IN ELECTROMAGNETIC EQUIPMENT

3 & 4 CAPITAL PARK  
OLD WOKING SURREY GU22 9LD  
Telephone 01483 794700 main 01483 794701 sales 01483 757298 fax  
E-mail: sales@emessem-solenoid.co.uk

® Trademark  
MAGNET-SCHULTZ

Product  
Group

**GFC**

with  
spring-return  
attachments

## D.C. Light-duty Solenoid Type G FC with Spring Return, Shotbolt Lock and Fork Attachments

Rectifier for A.C. supplies (VDE 0580)

For each of six sizes of pull-and-push  
Type G FC:

**spring-return assembly (R)** with optional  
**shotbolt attachment** — energise to lock (D)

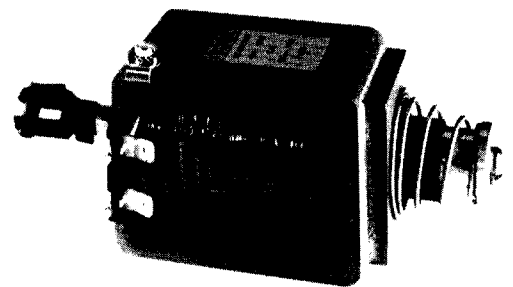
**fork attachment** — energise to push (B)  
energise to pull (A)

- Conical stainless steel spring
- High endurance, maintenance free teflon armature and push-rod bearings
- Coil with Class F insulation for voltages up to 250V D.C. — external rectifier for A.C. supplies
- Shotbolt, ratchet and holding-magnet locks listed in Product Groups:

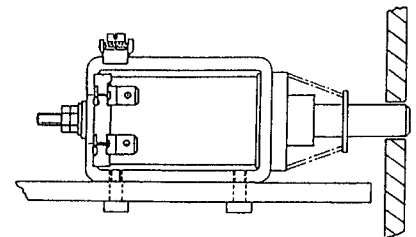
G TC A/W and G TU W — Types 57, 58, 59  
G TC E — flameproof type  
G FC (incl. right-angle types 60, 61)  
G HU Z; G DA and G DC; G MH and G MP

- General purpose, light duty solenoids for service in:

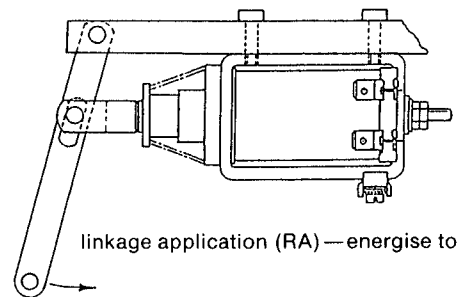
machine tools	office machines
automation	remote control
textile machines	packaging and coin equipment
guard door locks	



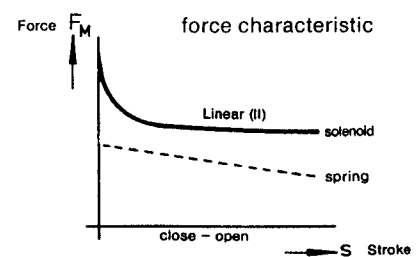
solenoid Type G FC X 040 X 00 B12 RB —  
with spring return and push fork



shotbolt application (RD) — spring to lock



linkage application (RA) — energise to pull





# Performance and dimension tables for type G FC with spring return

Duty Rating continuous (100%)	G FC	025		030		035		040		050		060	
Power consumption (W)		6.3		7		10		14		20		26	
Stroke (rated) (mm)		0	4 (8)	0	5 (9)	0	7 (11)	0	8 (12)	0	10 (15)	0	12 (20)
Magnetic Force $F_M$ (without spring) (N)		7	3	11	4	17	8	41	12	71	21	90	33
Spring Force (N)		3	2	4	2	6	4	12	5	18	9	27	16

Type	G FC					
Size	025	030	035	040	050	060
Dim.	Dimension (mm)					
<b>solenoid</b>						
a*	2	2.5	2	4	4	4
b <sub>1</sub>	25	30	35	40	50	60
d <sub>3</sub>	M3	M3	M3	M4	M5	M6
d <sub>4</sub>	M3	M4	M4	M5	M5	M6
d <sub>5</sub> +	M3	M3	M3	M4	M4	M5
e <sub>1</sub>	20	25	30	40	45	50
e <sub>2</sub>	12	14	18	18	28	32
e <sub>3</sub>	7.5	7.5	10	10	12.5	15
h <sub>2</sub>	39	45	55	65	76	88
l <sub>1</sub>	12	12	12	16	18	22
l <sub>2</sub>	13	16	18	20	30	33
t <sub>1</sub>	20	24	30	32	41	50
<b>shotbolt (C,D)</b>						
d <sub>1</sub>	8	8	8	10	10	12
d <sub>2</sub>	8	8	10	10	10	12
l <sub>5</sub>	22	22	22	24	26	33
l <sub>6</sub>	25	28	31	31	41	48
l <sub>7</sub>	15	15	15	15	15	20
<b>fork end (A,B)</b>						
b <sub>2</sub>	4	4	4	5	5	6
b <sub>3</sub>	4	4	4	4	5	6
d <sub>6</sub>	4	4	4	5	5	6
d <sub>7</sub>	4	4	4	4	5	6
l <sub>3</sub>	29	30	33	36	47	53
l <sub>4</sub>	23	23	23	25	31.5	37

## Performance table

The Performance Table terms are fully defined and explained in our Technical Bulletin G XX and in VDE 0580/35. The Magnetic Force ( $F_M$ ) listed is for the *hot* condition at 90% of the rated voltage, and will increase by approximately 20% at the rated voltage. The Magnetic Force does not include the Spring Force, which is listed separately; the spring forces given are those for continuous (100%) duty. By adjusting the lock-nuts, the stroke can be increased: marginally for attachments RB and RC, and up to the maximum shown in brackets for assemblies RA and RD — though with a considerable reduction of the Magnetic Force.

## Supply voltages

The standard supply voltages are: 24 V, 97 V, 195 V, 215 V (for rectified 110 V, 220 V, 240 V A.C.)

## Type Code

Solenoid type

Solenoid size

Spade connectors (B12) or free leads (EO-)

Attachment(s): R—spring return assembly only  
 RA—fork, pulling; spring return  
 RB—fork, pushing; spring return  
 RC—shotbolt, energise to lock  
 RD—shotbolt, spring to lock

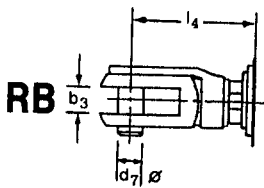
G FC X 030 X 00 B 12 RD

+Sizes 050 060—4 fixingholes \*Do not use overlength screws

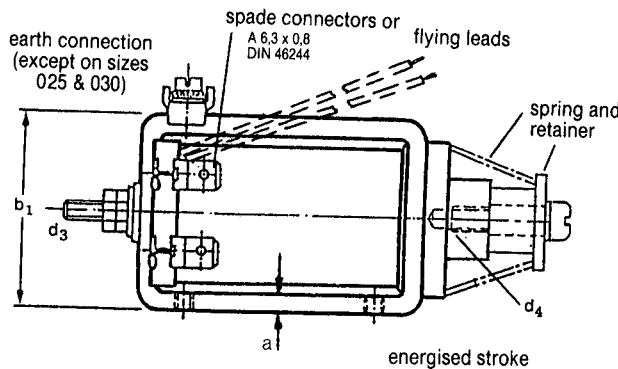
Thread locking compounds are not used in assembly

Specify also: Voltage (V)

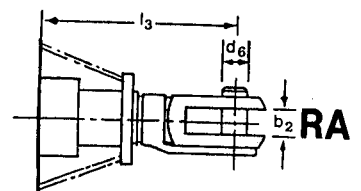
**Conversion factors**  
 1 N = 0.102kp 0.1kg  
 1 kg = 2.2lb  
 1mm = 0.039 in.  
 1 Ncm = 0.086 in. lb.



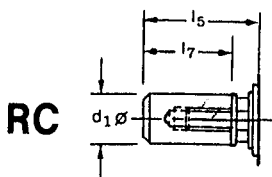
**RB**  
**FORK—energise to push**



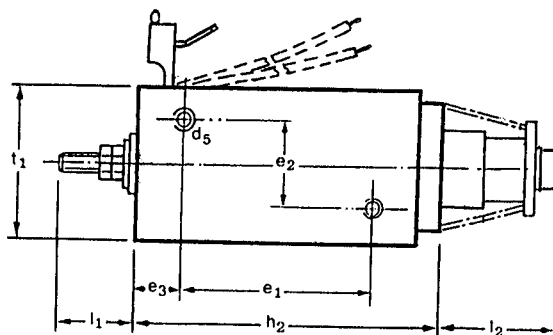
**R SPRING assembly on G FC solenoid**



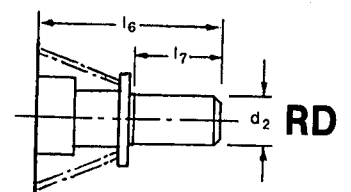
**RA**  
**FORK—energise to pull**



**RC**  
**SHOTBOLT—energise to lock**



Subject to our standard conditions



**RD**  
**SHOTBOLT—spring to lock**

## **X-ON Electronics**

Largest Supplier of Electrical and Electronic Components

*Click to view similar products for [magnet schultz](#) manufacturer:*

Other Similar products are found below :

[R16X16,24V10%](#) [GFCX030X00E13,24V100%](#) [GHUZ040M20D03,24V100%](#)